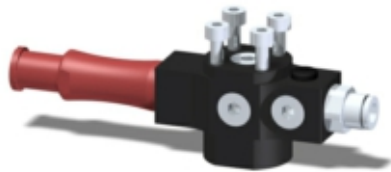


## VGS™ 3010 VGS3010.AG.00.BA



- ▶ Patented COAX® technology
- ▶ VGS™ allows easy installation and flexible positioning with several mounting options.
- ▶ VGS™ is compatible with any suction cup with G3/8" male fitting from Piab's assortment. More information about a chosen suction cup or other available suction cups for a specific application can be found at; [www.piab.com](http://www.piab.com)
- ▶ The three-stage cartridge will give extra high initial
- ▶ vacuum flow, which is suitable in high speed applications.
- ▶ Si cartridge chosen for extra vacuum flow.

### Technical data

| Description         | Unit | Value               |
|---------------------|------|---------------------|
| Feed pressure, max. | Mpa  | 0.7                 |
| Noise level range   | dBA  | 60-74               |
| Temperature range   | °C   | 10-80               |
| Weight              | g    | 164                 |
| Material            | -    | PP, PA, NBR, AL, SS |

### Vacuum flow COAX® cartridge MINI Si08-3

| Feed pressure* | Air consumption | Vacuum flow (NI/s) at different vacuum levels (-kPa) |      |      |      |      |      |      |      | Max vacuum |
|----------------|-----------------|--|------|------|------|------|------|------|------|------------|
|                |                 | 0  | 10   | 20   | 30   | 40   | 50   | 60   | 70   |            |
| 0.60           | 0.44            | 1.34   | 0.73 | 0.55 | 0.35 | 0.23 | 0.17 | 0.13 | 0.08 | 75         |

\*For vacuum flows at other feed pressures, see COAX® cartridge data sheets. \*Feed pressure tolerance, +/- 0.01 MPa

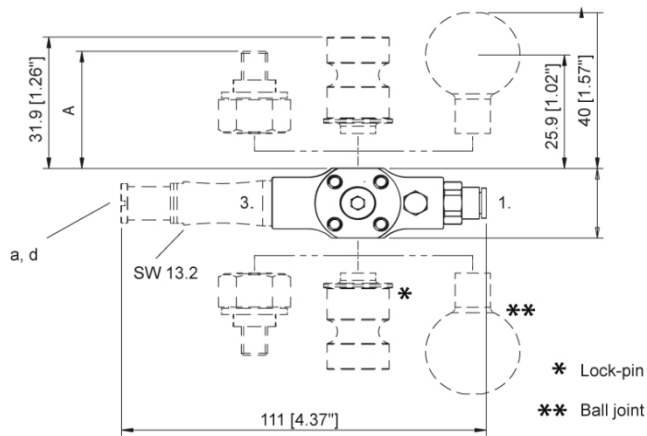
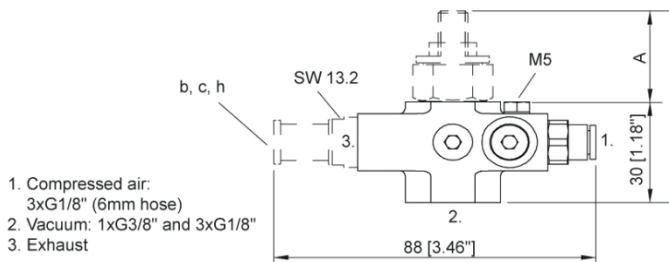
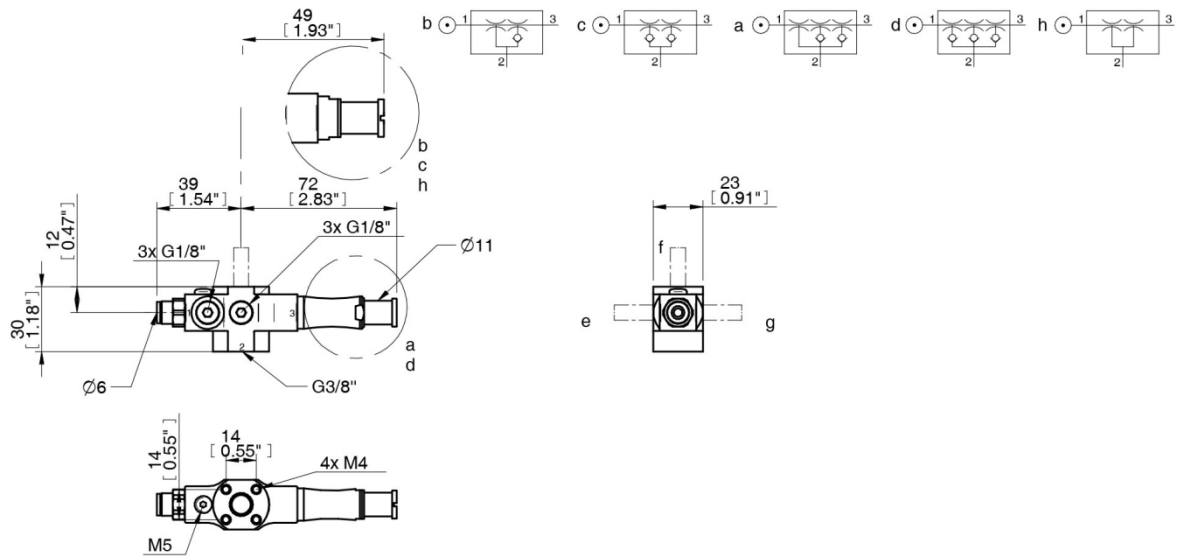
### Evacuation time COAX® cartridge MINI Si08-3

| Feed pressure* | Air consumption | Evacuation time (s/l) to reach different vacuum levels (-kPa) |      |      |      |      |      |      | Max vacuum |
|----------------|-----------------|---|------|------|------|------|------|------|------------|
|                |                 | 10  | 20   | 30   | 40   | 50   | 60   | 70   |            |
| 0.60           | 0.44            | 0.10  | 0.25 | 0.48 | 0.80 | 1.30 | 2.00 | 2.90 | 75         |

\*For evacuation times at other feed pressures, see COAX® cartridge data sheets. \*Feed pressure tolerance, +/- 0.01 MPa

### Dimensional drawing

a = COAX® cartridge MINI Si08-3



| Mounting | A (mm) |
|----------|--------|
| M8 / 16  | 16     |
| M6 / 22  | 22     |
| M8 / 27  | 27     |

### Ordering information

| Description   | Product code     |
|---|------------------|
| VGS™3010, COAX® cartridge MINI Si08-3, 4x M4 top, flush mount, No suction cup | VGS3010.AG.00.BA |