

## Bellows suction cup S.B65HN75.G14M.00



- ▶ The lifting movement can be used to separate small and thin objects.
- ▶ Only lightweight objects should be handled when the lifting force is parallel to the surface of the object, in order to achieve good precision and safe lifting movement.
- ▶ Suitable for level adjustment. Several short bellows in one lifting device can handle objects with height differences and varying shapes, for example embossed or corrugated plates.

### Lifting force

Description	Vertical			Parallel		
	20 -kPa	60 -kPa	90 -kPa	20 -kPa	60 -kPa	90 -kPa
Lifting forces	56.6 N	158.5 N	222.9 N	73.3 N	118.3 N	157.9 N

### Technical data

Description	Unit	Value
Internal volume	cm <sup>3</sup>	46.2
Weight	g	47
Min. curve radius -60 kPa	mm	30.0
Max. vertical movement	mm	18.5
Application	-	Dry sheet metal, Glass handling, High/low temp cup (plastic), Plastic injection molded parts,
Material	-	Hydrogenated Nitrile (HNBR), FKM
Colour	-	Blue, Black
Suction cup model	-	B
Suction cup shape	-	Bellows
Hardness °Shore A	-	75 °Shore A
Temperature range (°C)	°C	-30 – 140
Actuated outer diameter, Max	mm	70

### Fitting specification

Description	Value
Fitting size	1/4"
Fitting style	Male
Fitting type	G-Thread
Fitting material	Al, NBR , TPE
Fitting option	None
Temperature range (°C)	-20-60/100*

\*Max. Temperature short term contact, <10 seconds and 50% intermittence, ambient temperature 15-30°C, mechanical properties will start to degrade.

### Material resistance , Hydrogenated Nitrile, HNBR

Description	Value
-------------	-------

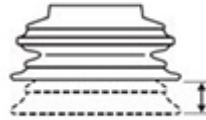
Alcohol	Good
Concentrated Acids	Fair
Ethanol	N/A
Hydrolysis	Good
Methanol	N/A
Oil	Excellent
Oxidation	Excellent
Petrol	Excellent
Wear Resistance	Excellent
Weather & Ozone	Excellent

Values specified in data sheet are tested at:

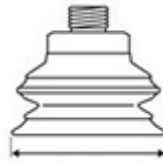
- Room temperature (20°C [68°F] ± 3°C [5.5°F]).
- Standard atmosphere (101.3 [29.9 inHg] ± 1.0 kPa [0.3 inHg]).
- Relative humidity 20-70%.
- Compressed air quality, DIN ISO 8573-1 class 4.



Internal volume



Max. vertical movement

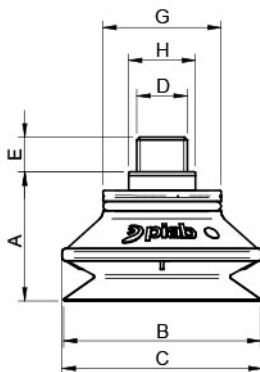


Diameter lip



Min. curve radius -60 kPa

Dimensional drawing



Product code	Description	Unit	Value
A	Building height	mm [inch]	42.5 [1.67"]
B	Diameter lip	mm [inch]	65.0 [2.56"]
C	Diameter (bellows)	mm [inch]	66.0 [2.60"]
D	Thread	-	G1/4"
E	Thread height	mm [inch]	9.0 [0.35"]
G	Diameter (upper part cup)	mm [inch]	39.0 [1.54"]
H	Keygrip	mm	SW 22

Ordering information

Description	Product code
<b>Bellows suction cup</b> , Ø 65mm, Hydrogenated Nitrile, HNBR, 75 °Shore A, G-Thread, 1/4", Male, None	S.B65HN75.G14M.00