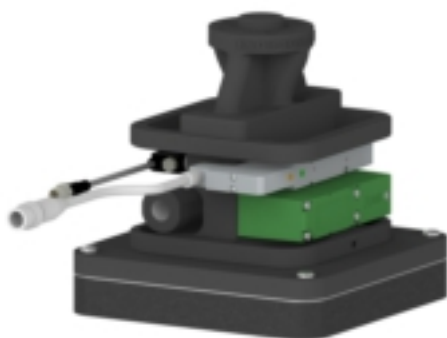


# Kenos® KCS



- ▶ The KCS (Kenos collaborative small gripper) gripping system is equipped with integrated COAX® SX cartridges.
- ▶ The quick change system of KCS allows the gripper to move from one application to another very quickly.
- ▶ The KCS is equipped with a flow restrictor suitable for handling different sized sealed or leaking objects with the same lifting device even if the total foam area is not covered, the KCS will still maintain enough vacuum level to lift the object.
- ▶ The COAX® SX cartridges- providing high performance even at low or fluctuating feed pressures. The KCS can be equipped with 1 or 2 COAX® SX cartridges.

## Technical data

Description	Unit	Value
Feed pressure, max.	MPa	0.7
Temperature range	°C	0-50
Weight	g	1,151
Material	-	PA, POM, EPDM, SS, NBR, PVC, HDPE
Noise level	dB(A)	70
Connection, compressed air	-	G 1/8"
Material foam	-	EPDM

## Technical data, monitoring

Description	Unit	Value
Feed pressure, max.	MPa	0.2
Vacuum	kPa	0-100
Materials, MD monitoring	-	PC, AI, NBR, CuZn, PA
Operating temperature range	°C	-10-60
Weight	g	47
Connection, vacuum	-	ø6/M5
Hysteresis	% F.S.	±2%
Allowable voltage	VDC	10.8-30
Enclosure	-	IP40
Operating humidity range	%RH	35-85
Response time	ms	~1
Accuracy (Ambient temperature at 25 °C)	% F.S.	±3%
Current consumption	mA	20
Display	-	LED
High voltage resistance	VDC	500
Insulation at 500 VDC	MΩ	100
Vibration resistant, XYZ 1,5 mm, XYZ, 2 h	Hz	10-55

### Technical data, solenoid valve

Description	Unit	Value
Fluid	-	Air
Operating pressure range	MPa	0.15-0.7
Operating temperature range	°C	-10 +50 (No freezing)
Manual override	-	Push-turn locking slotted type
Lubrication	-	Not required
Impact / Vibration resistance	m/s <sup>2</sup>	150/30
Electrical connection	-	M12 4pin waterproof connector, Male
Coil rated voltage	Vcc	24
Allowable voltage	% rated voltage	±10
Current consumption	mA	27
Surge voltage suppressor	-	Zener diode
Indicator light	-	LED

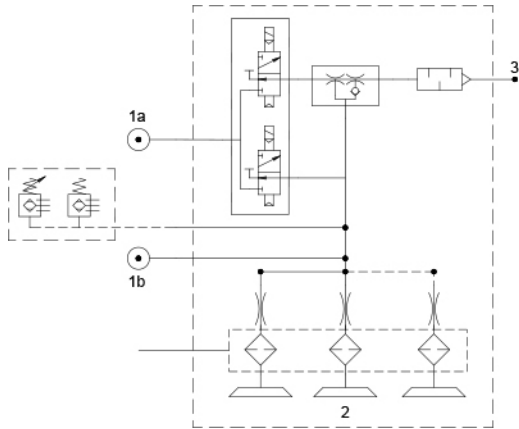
### Vacuum flow

Feed pressure pump / nozzle	Air Consumption per pump/nozzle	Vacuum flow (NI/s) at different vacuum levels (-kPa)									Max vacuum
MPa	NI/s	0	10	20	30	40	50	60	70	80	-kPa
0.47 / 0.43	2.21	3.46	3.02	2.41	1.70	1.02	0.61	0.47	0.28	0.10	90

### Gripping force data

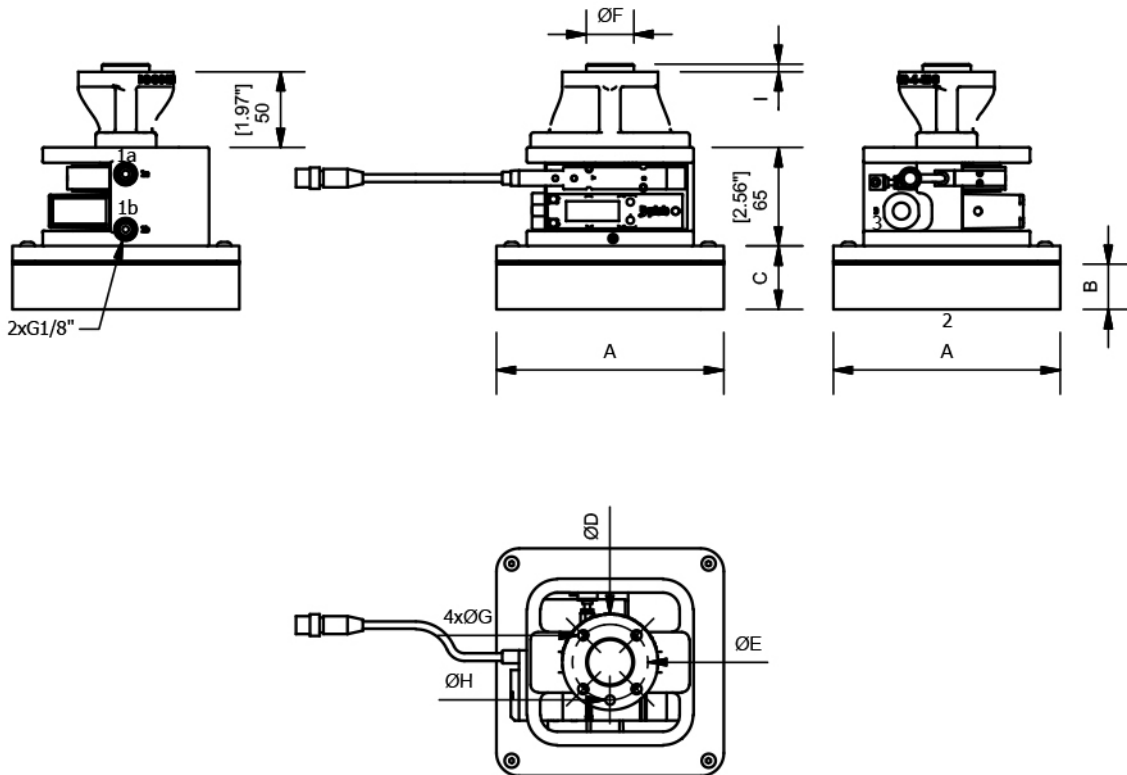
Force, N, at different vacuum levels (-kPa)						
30	40	50	60	70	80	90
136	181	226	271	317	362	407

Dimensional drawing

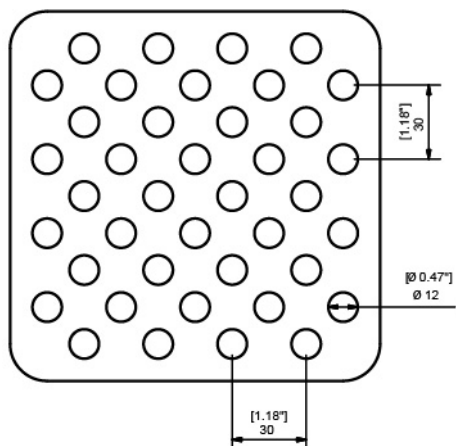


A	150 [5.91"]
B	20 [0.79"]
C	32 [1.26"]
D	55 [2.17"]
E	40 [1.57"]
F	25 [0.98"]
G	6.4 [0.25"]
H	6 [0.24"]
I	5 [0.20"]

Note: The filter, the monitoring and the valves are optional depending on your configuration.



Note: The monitoring and the valves are optional depending on your configuration.



### Ordering information

Description	Product code
KCS 110x110mm, Foam, Foam EPDM, Foam 20mm, With filter, Fine step, 150x150mm, Flow Reduction 0,6 mm (standard), Ejector pump, 1 x SX42, EV vacuum N.C. / EV blow off N.C., Vacuum switch, ISO 9409-1-40-M6	KCS.Q110.N211.150.FR6.SX421.V2.MD.40

### Ordering information, spare part foam

Description	Product code
Foam EPDM, Foam 20mm, With filter, Fine step, 150x150mm	FOAM.KCS.Q110.N211.150

### Ordering information, accessories

Description	Art. No.
Cable M8 3-pin female L=2m	0108141
Cable M12 4-pin female L=5m	0121817