

# HLD11 Indicator Light

Standard: IEC 60947-5

## Function

HLD11 Series of indicator light provide:

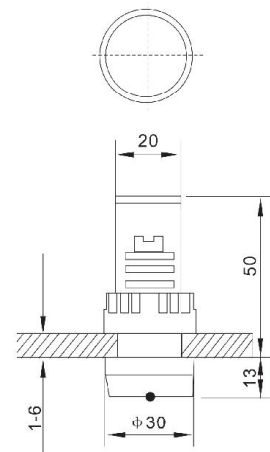
- Pilot signal, anticipating signals
- Emergency signals and other instructions incidents signal use

## Technical Data

Rated voltage(V)	AC/DC	AC
	6 12 24 36 48 110 220	220 230 380
Rated current(mA)	≤50	≤20
Working life(H)	30000	
Brightness of light(cd/m <sup>2</sup> )	≥40	
Power frequency withstand voltage	2500V AC 1min	
Before board protect degree	IP65	

## Order Information

Installation dimension	Type	Step-down Type	Button colour	Rated voltage	Reference	Overall Dimensions	Unit:mm	
22: $\phi$ 22	A: Full cover head & long terminal 2: Resistance type 4: Capacitance type		○	AC.DC 6V	HLD1122A21T7			
			●		HLD1122A21T3			
			●		HLD1122A21T4			
			●		HLD1122A21T5			
			●		HLD1122A21T8			
			○		AC.DC 12V			HLD1122A21J7
			●					HLD1122A21J3
			●					HLD1122A21J4
			●	HLD1122A21J5				
			●	HLD1122A21J8				
			○	AC.DC 24V				HLD1122A21B7
			●					HLD1122A21B3
			●					HLD1122A21B4
			●		HLD1122A21B5			
			●		HLD1122A21B8			
			○		AC.DC 110V			HLD1122A21F7
			●					HLD1122A21F3
			●					HLD1122A21F4
			●	HLD1122A21F5				
			●	HLD1122A21F8				
			○	AC.DC 220V				HLD1122A21M7
			●					HLD1122A21M3
			●					HLD1122A21M4
			●		HLD1122A21M5			
●	HLD1122A21M8							
○	AC 230V	HLD1122A41N7						
●		HLD1122A41N3						
●		HLD1122A41N4						
●		HLD1122A41N5						
●		HLD1122A41N8						

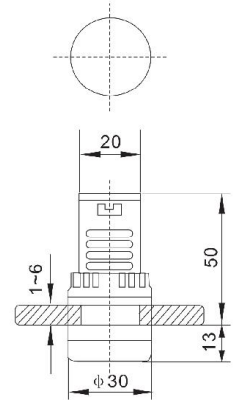


# HLD11 Indicator Light

Standard: IEC 60947-5

## Order Information

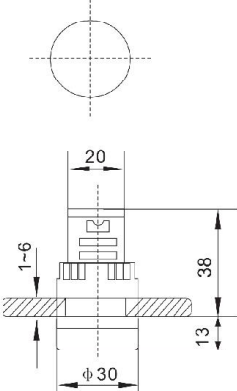
Installation dimension	Type	Step-down Type	Button colour	Rated voltage	Reference	Overall Dimensions	Unit:mm
22: $\varnothing$ 22	B: Half cover head&long terminal	2: Resistance type 4: Capacitance type	○	AC 380V	HLD1122A41Q7		
			●		HLD1122A41Q3		
			●		HLD1122A41Q4		
			●		HLD1122A41Q5		
			●		HLD1122A41Q8		
			○	AC.DC 6V	HLD1122B21T7		
			●		HLD1122B21T3		
			●		HLD1122B21T4		
			●		HLD1122B21T5		
			●		HLD1122B21T8		
			○	AC.DC 12V	HLD1122B21J7		
			●		HLD1122B21J3		
			●		HLD1122B21J4		
			●		HLD1122B21J5		
			●		HLD1122B21J8		
			○	AC.DC 24V	HLD1122B21B7		
			●		HLD1122B21B3		
			●		HLD1122B21B4		
			●		HLD1122B21B5		
			●		HLD1122B21B8		
○	AC.DC 110V	HLD1122B21F7					
●		HLD1122B21F3					
●		HLD1122B21F4					
●		HLD1122B21F5					
●		HLD1122B21F8					
○	AC.DC 220V	HLD1122B21M7					
●		HLD1122B21M3					
●		HLD1122B21M4					
●		HLD1122B21M5					
●		HLD1122B21M8					
○	AC 230V	HLD1122B41N7					
●		HLD1122B41N3					
●		HLD1122B41N4					
●		HLD1122B41N5					
●		HLD1122B41N8					
○	AC 380V	HLD1122B41Q7					
●		HLD1122B41Q3					
●		HLD1122B41Q4					
●		HLD1122B41Q5					
●		HLD1122B41Q8					

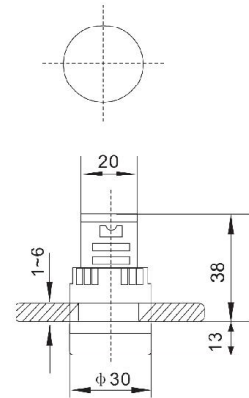


# HLD11 Indicator Light

Standard: IEC 60947-5

## Order Information

Installation dimension	Type	Step-down Type	Button colour	Rated voltage	Reference	Overall Dimensions	Unit:mm	
22: $\varnothing$ 22	C: Full cover head & short terminal	2: Resistance type	○	AC.DC 6V	HLD1122C21T7			
			●		HLD1122C21T3			
			●		HLD1122C21T4			
			●		HLD1122C21T5			
			●		HLD1122C21T8			
			○		AC.DC 12V			HLD1122C21J7
			●					HLD1122C21J3
			●					HLD1122C21J4
		●	HLD1122C21J5					
		●	HLD1122C21J8					
		○	AC.DC 24V	HLD1122C21B7				
		●		HLD1122C21B3				
		●		HLD1122C21B4				
		●		HLD1122C21B5				
		●	HLD1122C21B8					
		○	AC 220V	HLD1122C41M7				
		●		HLD1122C41M3				
		●		HLD1122C41M4				
		●		HLD1122C41M5				
		●	HLD1122C41M8					
		○	AC 230V	HLD1122C41N7				
		●		HLD1122C41N3				
		●		HLD1122C41N4				
		●		HLD1122C41N5				
		●	HLD1122C41N8					
		○	AC 380V	HLD1122C41Q7				
		●		HLD1122C41Q3				
		●		HLD1122C41Q4				
●	HLD1122C41Q5							
●	HLD1122C41Q8							



# HLD11 Indicator Light

Standard: IEC 60947-5

## Order Information

Installation dimension	Type	Step-down Type	Button colour	Rated voltage	Reference	Overall Dimensions	Unit:mm	
22: $\varnothing$ 22	D: Half cover head&short terminal	2: Resistance type	○	AC.DC 6V	HLD1122D21T7			
			●		HLD1122D21T3			
			●		HLD1122D21T4			
			●		HLD1122D21T5			
			●		HLD1122D21T8			
			○		AC.DC 12V			HLD1122D21J7
			●					HLD1122D21J3
			●					HLD1122D21J4
			●	HLD1122D21J5				
			●	HLD1122D21J8				
			○	AC.DC 24V				HLD1122D21B7
			●					HLD1122D21B3
			●					HLD1122D21B4
			●		HLD1122D21B5			
			●		HLD1122D21B8			
			○		AC 220V			HLD1122D41M7
			●					HLD1122D41M3
			●					HLD1122D41M4
			●	HLD1122D41M5				
			●	HLD1122D41M8				
			○	AC 230V				HLD1122D41N7
			●					HLD1122D41N3
			●					HLD1122D41N4
			●		HLD1122D41N5			
			●		HLD1122D41N8			
			○		AC 380V			HLD1122D41Q7
			●					HLD1122D41Q3
			●					HLD1122D41Q4
			●	HLD1122D41Q5				
			●	HLD1122D41Q8				

