

Electronic vacuum/pressure switches

Series SWD

Out of production

With digital display
High precision, easy to use.



- » Compact and lightweight.
- » Digital display: electronically precise switching with two separate switch outputs
- » Switching point and hysteresis programmable with the key pad.
- » Two separately programmable digital outputs allow to set the upper and lower limit value.
- » Special functions programmable: further adaption is possible.

2

CONTROL

APPLICATIONS:

- electronic vacuum/pressure switch for safety monitoring, optimization of cycle times or energy saving devices;
- it can be installed directly on the gripping point of a handling system;
- setting of the limit vacuum value and continuous vacuum control;
- user friendly and suitable for user's requirements.

Electric connections:

- This device operates correctly with a connector Mod. CS-DF04EG-E500 which should be ordered separately.
- Further details at the end of this section.

GENERAL DATA

| | |
|--------------------------------|---|
| Type of vacuum/pressure switch | electronic with polycarbonate housing |
| Connection | - vacuum connection G1/8 male thread and M5 female thread - pressure connection G1/8 male thread and M5 female |
| Display | 3 digit display pad to regulate setting point |
| LED | integrated for the indication of switching state |
| Electric connection | with 4-pole M8 connector |

CODING EXAMPLE

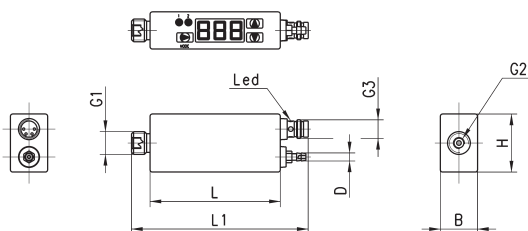
| | | | | | | |
|----|---|---|-----|---|---|---|
| SW | D | - | V00 | - | P | A |
|----|---|---|-----|---|---|---|

| | |
|------------|---|
| SW | SERIES SW = transducer |
| D | VERSION D = electronic with digital display |
| V00 | MEASURING RANGE V00 = from -1 to 0 bar P10 = from 0 to 10 bar |
| P | POLARITY P = PNP |
| A | PNEUMATIC CONNECTION A = G1/8 male thread and M5 female thread |

2

CONTROL

Vacuum/Pressure switch Series SWD



DIMENSIONS

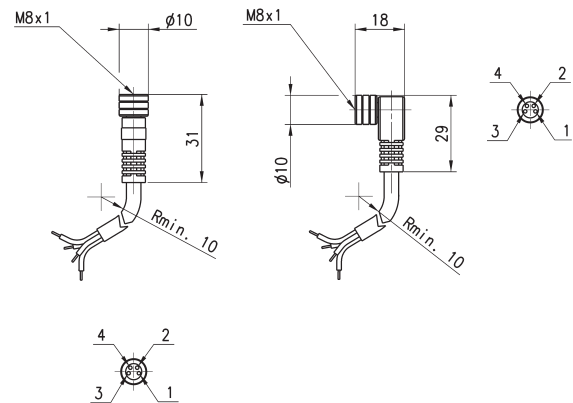
| Mod. | B | D | G1 | G2 | G3 | H | L | L1 |
|-------------------|----|-----|------|----|----|------|------|------|
| SWD-V00-PA | 16 | - | G1/8 | M5 | M8 | 24,7 | 58,5 | 75,5 |
| SWD-P10-PA | 16 | 3,4 | G1/8 | M5 | M8 | 24,7 | 58,5 | 75,5 |

TECHNICAL DATA

| Mod. | SWD-V00 PA | SWD-P10-PA |
|-------------------------------------|---|---|
| Fluid | Non-aggressive gas, dry air, without lubrication. | Non-aggressive gas, dry air, without lubrication. |
| Measurement range | -1 ÷ 0 bar | -1 ÷ 10 bar |
| Max overpressure [bar] | 5 | 16 |
| Precision | ± 1% measurement range | ± 1% measurement range |
| Hysteresis | Settable: from 0 to 100 % of set value or comparator mode | Settable: from 0 to 100 % of set value or comparator mode |
| Output signal | 2 digital | 2 digital |
| Max output current [mA] | 180 | 180 |
| Signalling | 2 x LED | 2 x LED |
| View resolution | 0,01 bar, 5 mmHg, 0,2 inHg, 1 kPa | 0,01 bar, 5 mmHg, 0,2 inHg, 1 kPa |
| View unit | bar, mmHg, inHg, kPa | bar, mmHg, inHg, kPa |
| Measurement value displaying | LED 3-digit 7-segments | LED 3-digit 7-segments |
| Electric connection | Connector M8 4 Poles | Connector M8 4 Poles |
| Pneumatic connection | G1/8 male ed M5 female | G1/8 male ed M5 female |
| Voltage | 10.8-30V DC | 10.8-30V DC |
| Current Consumption [mA] | < 55 | < 55 |
| IP Protection | IP 40/65 (with flexible tube) | IP 40/65 (with flexible tube) |
| Temperature effect | ± 3% measurement range | ± 3% measurement range |
| Operating temperature | 0°C ÷ 50 °C | 0°C ÷ 50 °C |
| Weight [g] | 30 | 30 |

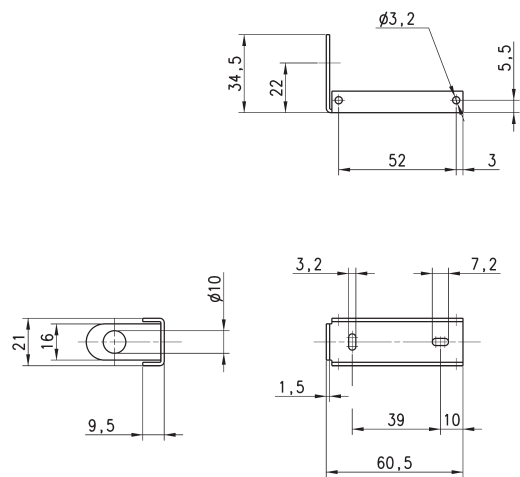
Circular M8 4-pole connectors, Female

With PU sheathing, non shielded cable.
Protection class: IP65



| Mod. | Type of connector | Cable length (m) |
|----------------|--------------------------|------------------|
| CS-DF04EG-E200 | straight | 2 |
| CS-DF04EG-E500 | straight | 5 |
| CS-DR04EG-E200 | right angle (90 degrees) | 2 |
| CS-DR04EG-E500 | right angle (90 degrees) | 5 |

Accessories



| |
|-------|
| Mod. |
| SWD-B |