

Series 2 mechanically operated minivalves

3/2-way

Ports M5, cartridge \varnothing 4


The mechanically operated Series 2 miniature valves with 3-way/2-position normally closed function are available with M5 threaded ports or with an integrated super-rapid fitting for \varnothing 4mm tubes.

The devices are actuated by a plunger, roller/lever or a unidirectional lever.

GENERAL DATA

Construction	poppet type
Valve group	3-way/2-position
Materials	aluminium body, brass plunger, NBR seals
Mounting	by means of screws in the through-holes of the valve body
Ports	M5, \varnothing 4mm cartridge
Room temperature	0°C ÷ 60°C
Fluid temperature	0°C ÷ 50°C
Operating pressure	0 bar ÷ 10 bar
Fluid	Filtered air, without lubrication. If lubricated air is used, it is recommended to use ISO VG32 oil. Once applied the lubrication should never be interrupted.

CODING EXAMPLE

2	3	4	-	94	5
---	---	---	---	----	---

2	SERIES
3	FUNCTION 3 = 3/2-way NC 4 = 3/2-way NO
4	PORTS 4 = cartridge \varnothing 4mm 5 = M5
94	ACTUATION 94 = plunger 95 = lever/roller 96 = unidirectional lever 98 = plunger, panel mounting
5	RESETTING 5 = spring return

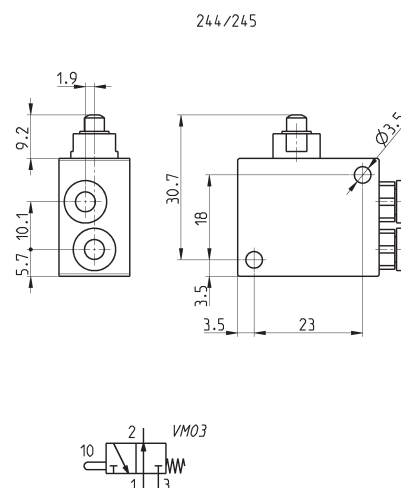
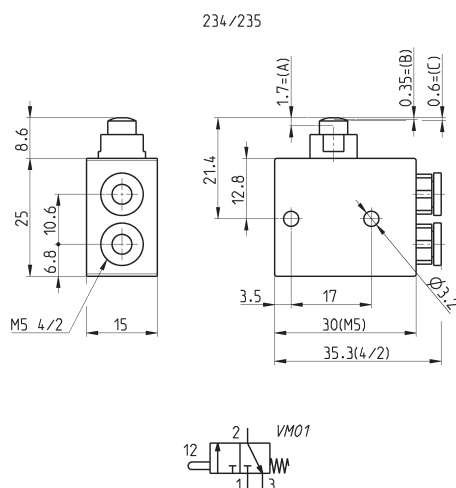
Minivalves Mod. 234-945, 235-945, 244-945, 245-945

Operating pressure from 0 to 10 bar - Flow rate = 100 NI/min - Actuating force at 6 bar = 6 N

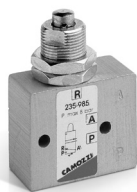


DRAWING LEGEND

A = total stroke
B = pre-stroke
C = effective stroke

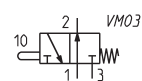
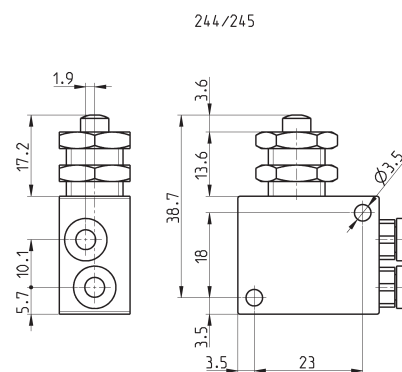
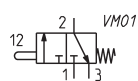
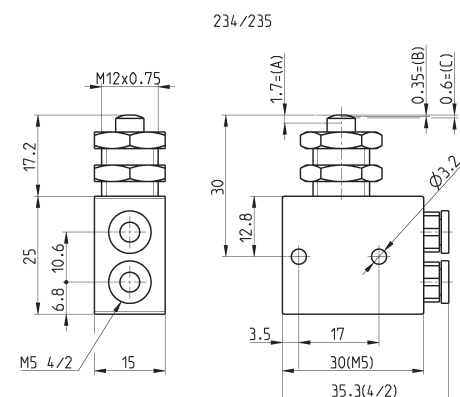


Mod.	SYMBOL
234-945	VM01
235-945	VM01
244-945	VM03
245-945	VM03

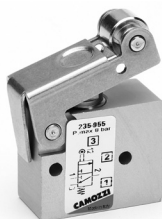


DRAWING LEGEND

A = total stroke
B = pre-stroke
C = effective stroke

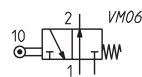
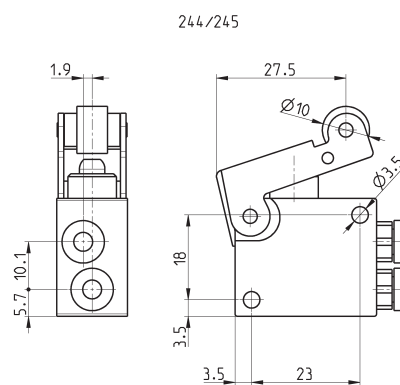
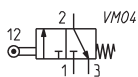
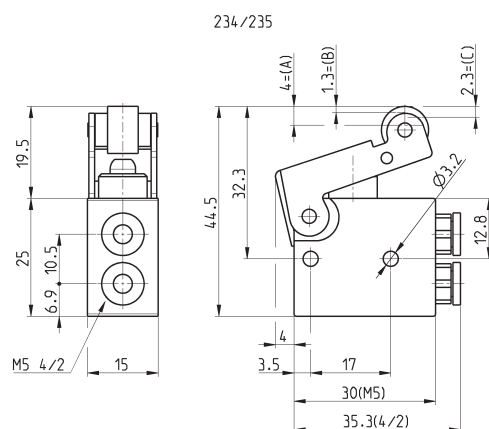


Mod.	SYMBOL
234-985	VM01
235-985	VM01
244-985	VM03
245-985	VM03



DRAWING LEGEND

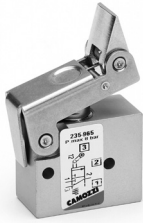
A = total stroke
B = pre-stroke
C = effective stroke



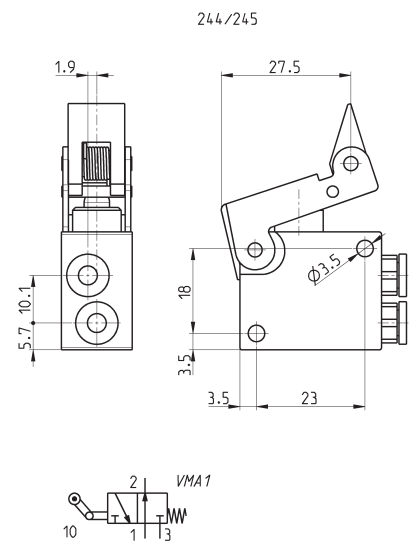
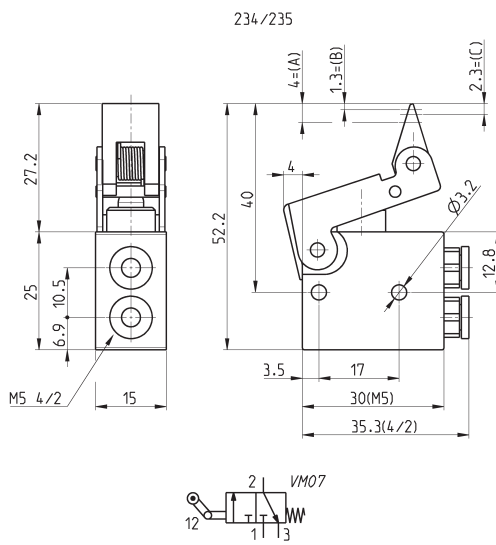
Mod.	SYMBOL
234-955	VM04
235-955	VM04
244-955	VM06
245-955	VM06

Minivalves Mod. 234-965, 235-965, 244-965, 245-965

Operating pressure from 0 to 10 bar - Flow rate = 100 NI/min - Actuating force at 6 bar = 6 N



DRAWING LEGEND
 A = total stroke
 B = pre-stroke
 C = effective stroke



Mod.	SYMBOL
234-965	VM07
235-965	VM07
244-965	VMA1
245-965	VMA1