

Mechanically operated valves Series 1 and 3

Series 1: 3/2-way and 5/2-way, ports G1/8 and G1/4

Series 3: 3/2-way and 5/2-way, ports G1/8



These mechanically operated valves have been designed with three different types of actuation:

- plunger
- lever/roller
- unidirectional lever/roller

In each case, return is triggered by a mechanical spring.

The 3/2-way monostable valves of Series 3 are normally closed in the rest position when pressure is supplied in 1 and are normally open when pressure is supplied on connection 3, the user port 2 remaining unchanged.

The 5/2-way valves of Series 3 may be supplied via the ports 3 and 5 with two different pressures if a cylinder has to be operated using a delivery pressure which is different from the return pressure.

GENERAL DATA

Construction	spool-type (Series 3), poppet-type (Series 1)
Valve group	3/2, 5/2 way/pos.
Materials	aluminium body, poppet OT58, stainless steel spool, NBR seals
Ports	G1/8, G1/4
Ambient temperature	0°C÷ 60°C
Medium temperature	0°C÷ 50°C
Operating pressure	see models
Fluid	Filtered air, without lubrication. If lubricated air is used, it is recommended to use ISO VG32 oil. Once applied the lubrication should never be interrupted.

CODING EXAMPLE

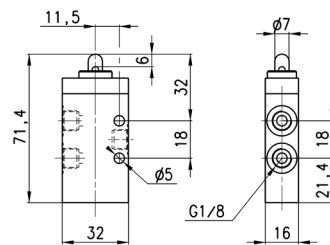
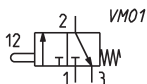
3	3	8	-	94	5
3	<p>SERIES: 1 3</p>				
3	<p>FUNCTION: 3 = 3/2 ways NC 4 = 3/2 ways NO (only Series 1) 5 = 5/2 ways</p>				
8	<p>PORTS: 8 = G1/8 4 = G1/4 (only Series 1)</p>				
94	<p>ACTUATION: 94 = plunger 95 = lever/roller 96 = unidirectional roller</p>				
5	<p>RESETTING: 5= spring return</p>				

2

CONTROL

Valve Mod. 338-945

Operating pressure = $-0,9 \div 10$ bar
Flow rate = 700 Nl/min.
Actuating force = 32N



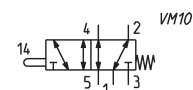
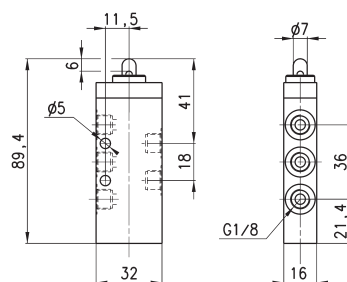
Mod.

338-945



Valve

Operating pressure = $-0,9 \div 10$ bar
 Flow rate = 700 NI/min.
 Actuating force = 35N



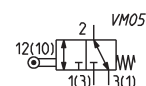
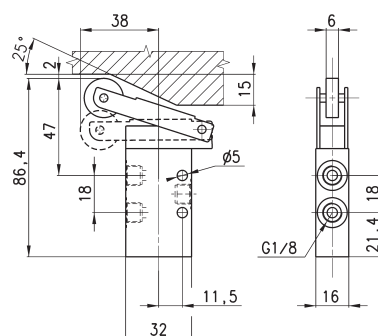
Mod.

358-945



Valve

Operating pressure = $-0,9 \div 10$ bar
 Flow rate = 700 NI/min.
 Actuating force = 15N



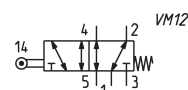
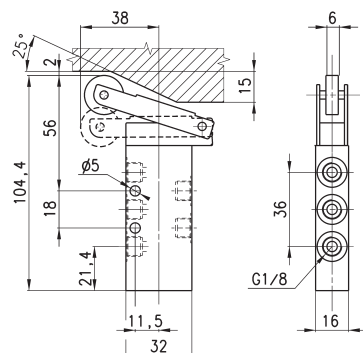
Mod.

338-955



Valve

Operating pressure = $-0,9 \div 10$ bar
 Flow rate = 700 NI/min.
 Actuating force = 17N



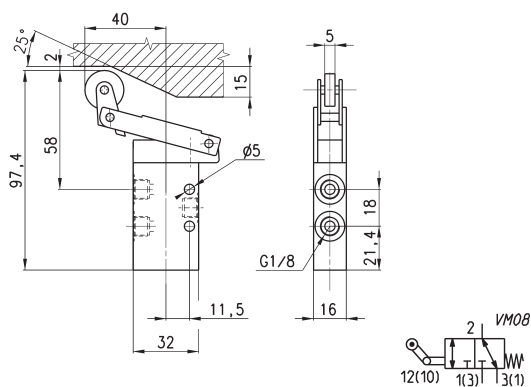
Mod.

358-955



Valve

Operating pressure = $-0,9 \div 10$ bar
 Flow rate = 700 NI/min.
 Actuating force = 15N



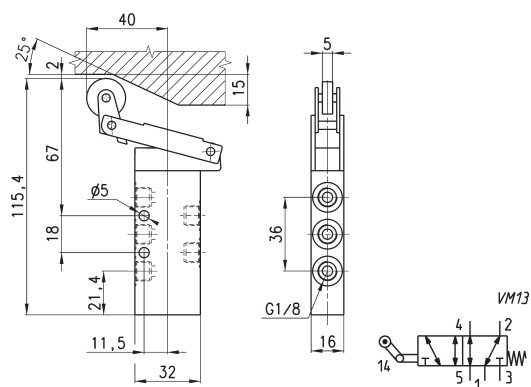
Mod.

338-965



Valve

Operating pressure = $-0,9 \div 10$ bar
 Flow rate = 700 NI/min.
 Actuating force = 16N



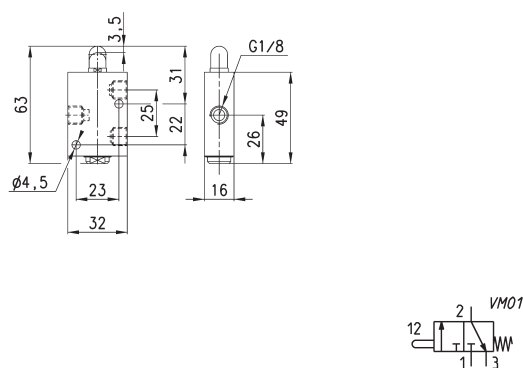
Mod.

358-965



Valve

Operating pressure = $0 \div 10$ bar
 Flow rate = 500 NI/min.
 Actuating force at 6 bar = 70N



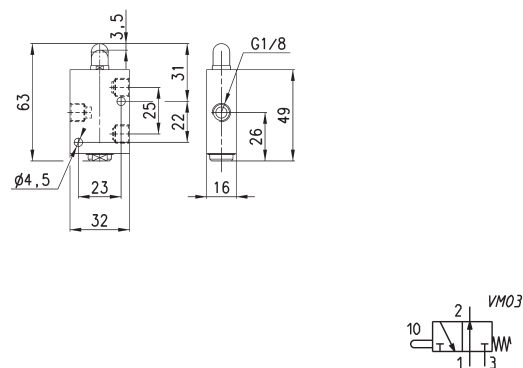
Mod.

138-945



Valve

Operating pressure = $0 \div 10$ bar
 Flow rate = 500 NI/min.
 Actuating force at 6 bar = 70N



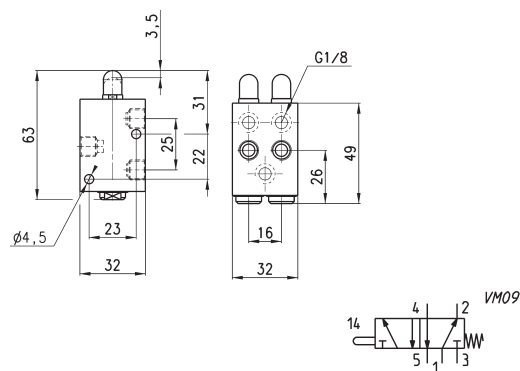
Mod.

148-945



Valve

Operating pressure = $0 \div 10$ bar
 Flow rate = 500 NI/min.
 Actuating force at 6 bar = 120N



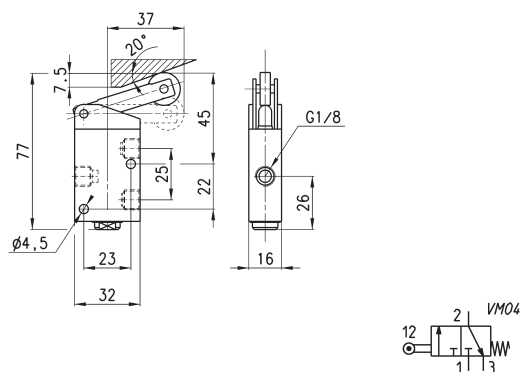
Mod.

158-945



Valve

Operating pressure = $0 \div 10$ bar
 Flow rate = 500 NI/min.
 Actuating force at 6 bar = 36N



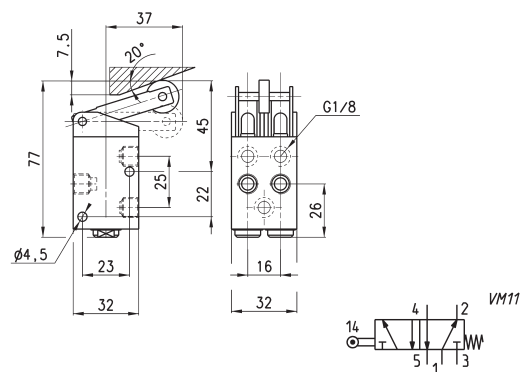
Mod.

138-955



Valve

Operating pressure = $0 \div 10$ bar
 Flow rate = 500 NI/min.
 Actuating force at 6 bar = 92N



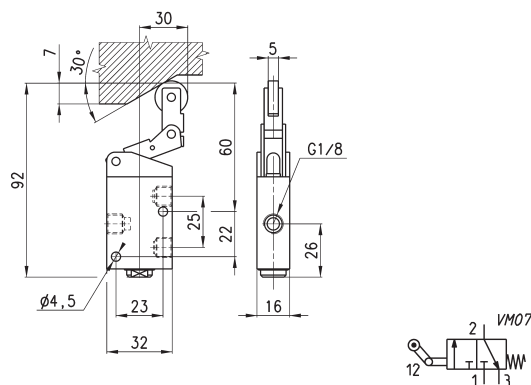
Mod.

158-955



Valve

Operating pressure = $0 \div 10$ bar
 Flow rate = 500 NI/min.
 Actuating force at 6 bar = 41N



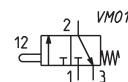
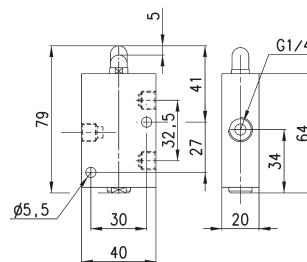
Mod.

138-965



Valve

Operating pressure = 0 ÷ 10 bar
Flow rate = 1250 Nl/min.
Actuating force at 6 bar = 64N



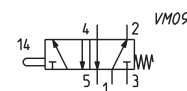
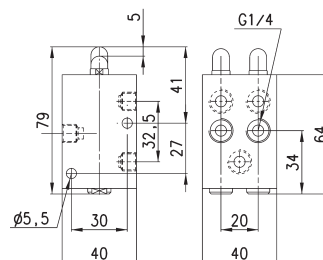
Mod.

134-945



Valve

Operating pressure = 0 ÷ 10 bar
Flow rate = 1250 Nl/min.
Actuating force at 6 bar = 147N



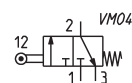
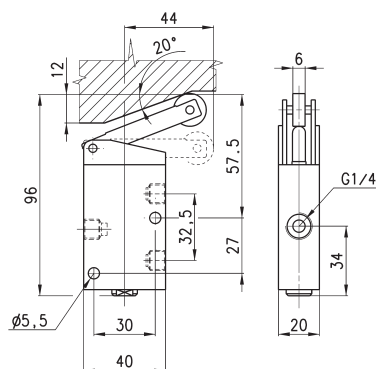
Mod.

154-945



Valve

Operating pressure = 0 ÷ 10 bar
Flow rate = 1250 Nl/min.
Actuating force at 6 bar = 41N



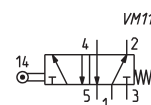
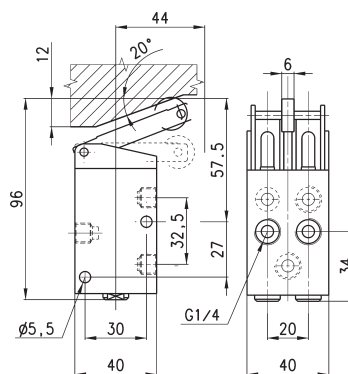
Mod.

134-955



Valve

Operating pressure = 0 ÷ 10 bar
Flow rate = 1250 NI/min.
Actuating force at 6 bar = 110N



Mod.

154-955