

Profiles 12 – modular dimension of 60 mm

The robust option for load-carrying applications

- The strongest profile line in the MB system
- Exceptional reliability against pre-tension losses
- Tensile loading up to 10,000 N per screw connection
- For particularly stable, heavy-duty frame structures



Materials used in all the following products:

Al, anodized



Profile 12 60x60 light



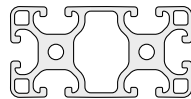
A [cm ²]	m [kg/m]	I _x [cm ⁴]	I _y [cm ⁴]	I _t [cm ⁴]	W _x [cm ³]	W _y [cm ³]
14.50	3.91	46.02	46.02	5.00	15.36	15.36
natural, cut-off max. 6000 mm						0.0.001.16
natural, 1 pce., length 6000 mm						0.0.001.06



Profile 12 60x60



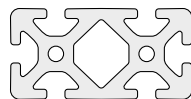
A [cm ²]	m [kg/m]	I _x [cm ⁴]	I _y [cm ⁴]	I _t [cm ⁴]	W _x [cm ³]	W _y [cm ³]
20.60	5.55	70.50	70.50	10.00	23.50	23.50
natural, cut-off max. 6000 mm						0.0.001.11
natural, 1 pce., length 6000 mm						0.0.001.01



Profile 12 120x60 light



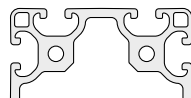
A [cm ²]	m [kg/m]	I _x [cm ⁴]	I _y [cm ⁴]	I _t [cm ⁴]	W _x [cm ³]	W _y [cm ³]
26.15	7.10	88.15	355.50	50.00	29.40	59.40
natural, cut-off max. 6000 mm						0.0.001.17
natural, 1 pce., length 6000 mm						0.0.001.07



Profile 12 120x60



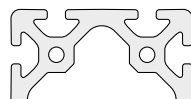
A [cm ²]	m [kg/m]	I _x [cm ⁴]	I _y [cm ⁴]	I _t [cm ⁴]	W _x [cm ³]	W _y [cm ³]
37.58	10.15	135.40	509.70	105.00	45.10	85.10
natural, cut-off max. 6000 mm						0.0.001.12
natural, 1 pce., length 6000 mm						0.0.001.02



Profile 12 120x120 light



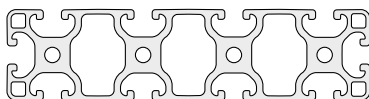
A [cm ²]	m [kg/m]	I _x [cm ⁴]	I _y [cm ⁴]	I _t [cm ⁴]	W _x [cm ³]	W _y [cm ³]
44.45	12.00	679.60	679.60	410.00	113.50	113.50
natural, cut-off max. 6000 mm						0.0.001.18
natural, 1 pce., length 6000 mm						0.0.001.28



Profile 12 120x120



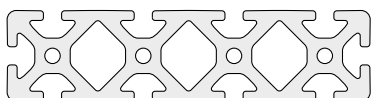
A [cm ²]	m [kg/m]	I _x [cm ⁴]	I _y [cm ⁴]	I _t [cm ⁴]	W _x [cm ³]	W _y [cm ³]
60.40	16.30	948.00	948.00	690.00	159.00	159.00
natural, cut-off max. 6000 mm						0.0.001.13
natural, 1 pce., length 6000 mm						0.0.001.23



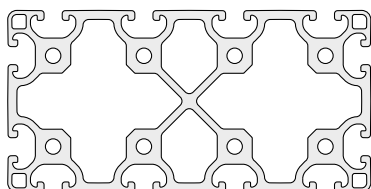
Profile 12 240x60 light



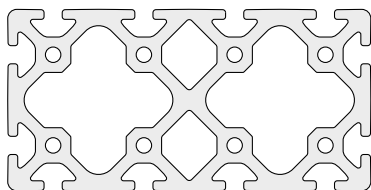
A [cm ²]	m [kg/m]	I _x [cm ⁴]	I _y [cm ⁴]	I _t [cm ⁴]	W _x [cm ³]	W _y [cm ³]
49.10	13.25	170.65	2,585.50	140.00	57.02	215.90
natural, cut-off max. 6000 mm						0.0.001.20
natural, 1 pce., length 6000 mm						0.0.001.30

**Profile 12 240x60**

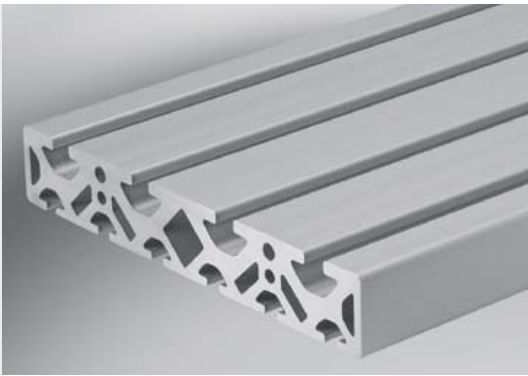
A [cm ²]	m [kg/m]	I _x [cm ⁴]	I _y [cm ⁴]	I _t [cm ⁴]	W _x [cm ³]	W _y [cm ³]	
72.60	19.60	269.38	3,777.20	250.00	89.60	314.80	
natural, cut-off max. 6000 mm							0.0.001.15
natural, 1 pce., length 6000 mm							0.0.001.25

**Profile 12 240x120 light**

A [cm ²]	m [kg/m]	I _x [cm ⁴]	I _y [cm ⁴]	I _t [cm ⁴]	W _x [cm ³]	W _y [cm ³]	
83.60	22.60	1,329.50	4,529.80	1,320.00	221.80	378.10	
natural, cut-off max. 6000 mm							0.0.001.19
natural, 1 pce., length 6000 mm							0.0.001.29

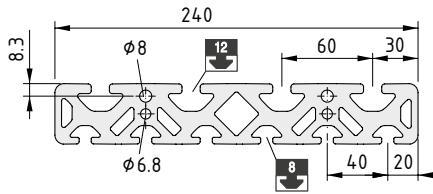
**Profile 12 240x120**

A [cm ²]	m [kg/m]	I _x [cm ⁴]	I _y [cm ⁴]	I _t [cm ⁴]	W _x [cm ³]	W _y [cm ³]	
112.00	30.24	1,815.20	6,168.90	2,010.00	302.00	514.10	
natural, cut-off max. 6000 mm							0.0.001.14
natural, 1 pce., length 6000 mm							0.0.001.24



Profile 12/8 240x40

- Special profile with Line 8 and 12 grooves
- For building carriages for linear slides



Profile 12/8 240x40



Al, anodized

A [cm ²]	m [kg/m]	I _x [cm ⁴]	I _y [cm ⁴]	I _t [cm ⁴]	W _x [cm ³]	W _y [cm ³]	
57.94	15.70	83.90	2,904.15	57.22	41.60	242.15	
natural, cut-off max. 6000 mm							0.0.001.04
natural, 1 pce., length 6000 mm							0.0.001.03