



# Manifolds, Fittings, Tubing and Accessories

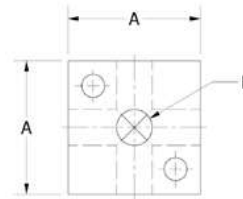


We offer a wide range of connectors, blocks, fittings, and accessories, plus a variety of manifolds supporting our pneumatic systems.

- Each product is **highly configurable**
- Made of **high quality materials and construction**
- Expansive product and engineering **knowledge**

# Manifolds, Fittings, Tubing and Accessories

## MANIFOLD BLOCKS

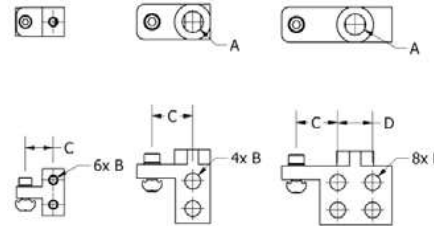


- Allows for multiple porting of pneumatic vacuum or air circuits.
- Ports in 5 directions for easy distribution.
- Spread out port design accommodates large fittings.
- Use with X, JX, HX, and D type profile.

	A	B (5 Places)	Profile	Weight (g)	Piab No.
LVT M5	22	M5	L/X	29	0214526
LVT 1/8 X	32	G 1/8"	X/HX	56	0214525
LVT 1/4 X	38	G 1/4"	X/JX/IX	80	0214524



## MANIFOLD PARALLEL BLOCKS



- Allows for multiple porting of pneumatic vacuum or air circuits.
- Assures stable attachment to frame profile.
- Aligns tubing parallel to the frame for clean plumbing.
- Use with L type profile.

	A	B	C	D	Profile	Weight (g)	Piab No.
VTB M5 L	-	M5	15	-	L	23	0212971
VTB 1/4 X	G 1/4"	G 1/8"	22	-	X	41	0212972
VTB 2-1-1/4 X	G 1/4"	G 1/8"	22	20	X	63	0214748
VTB 2-2-1/4 X	G 1/4"	G 1/8"	22	20	X	89	0214750
VTB 1/4 JX	G 1/4"	G 1/8"	30	-	JX	47	0214746
VTB 2-1-1/4 JX	G 1/4"	G 1/8"	30	20	JX	71	0214747
VTB 2-2-1/4 JX	G 1/4"	G 1/8"	30	20	JX	75	0214749

### VTB M5 L

Product Code: VTB M5 L



### VTB 1/4 X

Product Code: VTB 1/4 X



### VTB 2-1-1/4 X

Product Code: VTB 2-1-1/4 X



### VTB 2-2-1/4 X

Product Code: VTB 2-2-1/4 X



### VTB 1/4 JX

Product Code: VTB 1/4 JX



### VTB 2-1-1/4 JX

Product Code: VTB 2-1-1/4 JX

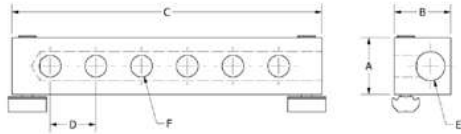


### VTB 2-2-1/4 JX

Product Code: VTB 2-2-1/4 JX



**MANIFOLD SERIES BLOCKS**



• Can mount to Piab's aluminum profile or a custom plate.

	A	B	C	D	E	F	Weight (g)	Piab No.
<b>VPI 1-2-1/4</b>	23	23	50	20	G 1/4	G 1/8	67	0214738
<b>VPI 1-2-3/8</b>	26	26	60	20	G 3/8	G 1/4	92	0214739
<b>VPI 1-4-1/4</b>	23	23	86	20	G 1/4	G 1/8	103	0214740
<b>VPI 1-4-3/8</b>	26	26	100	20	G 3/8	G 1/4	139	0214741
<b>VPI 1-6-1/4</b>	23	23	127	20	G 1/4	G 1/8	138	0214742
<b>VPI 1-6-3/8</b>	26	26	140	20	G 3/8	G 1/4	184	0214743
<b>VPI 1-8-1/4</b>	23	23	158	20	G 1/4	G 1/8	67	0214744
<b>VPI 1-8-3/8</b>	26	26	180	20	G 3/8	G 1/4	247	0214745

**VPI 1-2-1/4**

Product Code: VPI 1-2-1/4

- 1 x G 1/4" inlet.
- 2 x G 1/8" outlets.
- Use with L, X, D, JX & HX type profile.



**VPI 1-2-3/8**

Product Code: VPI 1-2-3/8

- 1 x G 3/8" inlet.
- 4 x G 1/4" outlets.
- Use with X, D, JX & HX type profile.



**VPI 1-4-1/4**

Product Code: VPI 1-4-1/4

- 1 x G 1/4" inlet.
- 4 x G 1/8" outlets.
- Use with L, X, D, JX & HX type profile.



**VPI 1-4-3/8**

Product Code: VPI 1-4-3/8

- 1 x G 3/8" inlet.
- 4 x G 1/4" outlets.
- Use with X, D, JX & HX type profile.



**VPI 1-6-1/4**

Product Code: VPI 1-6-1/4

- 1 x G 1/4" inlet.
- 6 x G 1/8" outlets.
- Use with X, D, JX & HX type profile.



**VPI 1-6-3/8**

Product Code: VPI 1-6-3/8

- 1 x G 3/8" inlet.
- 6 x G 1/4" outlets.
- Use with X, D, JX & HX type profile.



**VPI 1-8-1/4**

Product Code: VPI 1-8-1/4

- 1 x G 1/4" inlet.
- 8 x G 1/8" outlets.
- Use with D, JX & HX type profile.



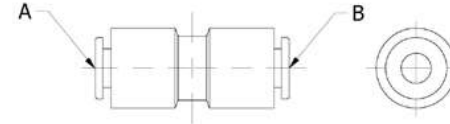
**VPI 1-8-3/8**

Product Code: VPI 1-8-3/8

- 1 x G 3/8" inlet.
- 8 x G 1/4" outlets.
- Use with D, JX & HX type profile.



**STRAIGHT UNION**



	A(Tubing Size)	B(Tubing Size)	Weight (g)	Piab
<b>H04-00-10</b>	4	4	16	0214440
<b>H04-06-10</b>	4	6	20	0214442
<b>H06-00-10</b>	6	6	21	0214444
<b>H06-08-10</b>	6	8	28	0214445
<b>H08-00-10</b>	8	8	35	0214446

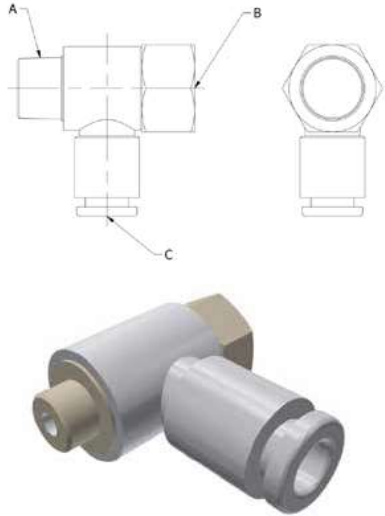
- Accepts FEP, PFA, nylon, soft nylon, and polyurethane tubes.
  - Fluid: air, water.
  - Operating pressure range: -100kPa~1MPa.
  - Release collar allows easy removal of tubing without causing damage to the tube.
  - This product is not intended for use in potable water systems.
  - One-touch straight union fitting.
- \* Sold in packs of 10.

**MALE CONNECTOR**

Product Code: H06-02S



**UNIVERSAL FEMALE ELBOW**



- Accepts FEP, PFA, nylon, soft nylon, and polyurethane tubes.
  - Fluid: air, water.
  - Operating pressure range: -100kPa~1MPa.
  - Release collar allows easy removal of tubing without causing damage to the tube.
  - This product is not intended for use in potable water systems.
- \* Sold in packs of 10.

	A(Tubing Size)	B(Male Thread)	C (Female Thread)	Weight (g)	Piab No.
<b>VF04-M5-10</b>	4	M5 x .8	M5 x 0.8	60	0214723
<b>VF04-015-10</b>	4	R 1/8"	Rc 1/8	18	0214728
<b>VF06-M5-10</b>	6	M5 x .8	M5 x 0.8	6	0214732
<b>VF06-015-10</b>	6	R 1/8"	Rc 1/8	19	0214730
<b>VF06-025-10</b>	6	R 1/4"	Rc 1/4	36	0214731
<b>VF08-015-10</b>	8	R 1/8"	Rc 1/8	29	0214733
<b>VF08-025-10</b>	8	R 1/4"	Rc 1/4	37	0214734

**FINGER VALVES**

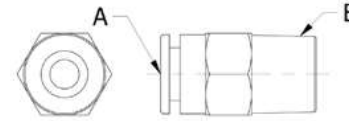
Finger valve series VHK has a large effective area of 2.0 to 17.5mm<sup>2</sup>. This series begins with a minimum tube O.D of ø4. The valve direction clearly indicates whether the valve is open or closed (shut to open is counter-clockwise). Classification of knob by color difference facilitates distinction between 2 port valves (gray) and 3 port valves (blue). The optional flame resistant model's knob, whether using the 2 or 3 port valve, is red.

	Piab No.
<b>VHK2-04F-04F</b>	0214735
<b>VHK2-06F-06F</b>	0214736
<b>VHK2-08F-08F</b>	0214737

- Finger valve, standard.
- 2 or 3 port available.
- Effective area: 2.0 to 17.5mm<sup>2</sup>.
- Max. operating pressure: 1.0MPa.
- Fluid: air.



**MALE CONNECTORS**

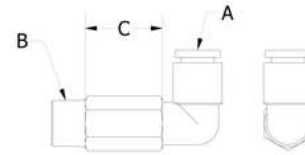


	A(Tubing Size)	B(Male Thread)	Weight (g)	Piab No.
<b>H04-M3-10</b>	4	M3	30	0214443
<b>H04-M5-10</b>	4	M5	35	0212973
<b>H04-015-10</b>	4	R 1/8"	55	0212974
<b>H04-025-10</b>	4	R 1/4"	100	0214441
<b>H06-M5-10</b>	6	M5	45	0212975
<b>H06-015-10</b>	6	R 1/8"	105	0212976
<b>H06-025-10</b>	6	R 1/4"	115	0212977
<b>H08-015-10</b>	8	R 1/8"	115	0212978
<b>H08-025-10</b>	8	R 1/4"	125	0212979

- Accepts FEP, PFA, nylon, soft nylon, and polyurethane tubes.
  - Fluid: air, water.
  - Operating pressure range: -100kPa~1MPa.
  - Release collar allows easy removal of tubing without causing damage to the tube.
  - This product is not intended for use in potable water systems.
  - One-touch male fitting.
- \* Sold in packs of 10.



**EXTENDED MALE ELBOW**

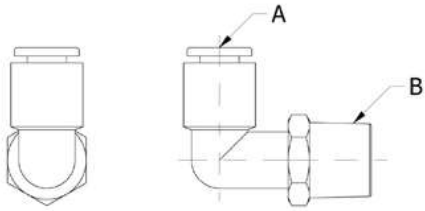


- Accepts FEP, PFA, nylon, soft nylon, and polyurethane tubes.
  - Fluid: air, water.
  - Operating pressure range: -100kPa~1MPa.
  - Release collar allows easy removal of tubing without causing damage to the tube.
  - This product is not intended for use in potable water systems.
- \* Sold in packs of 10.



	A (Tubing Size mm)	B (Male Thread)	C (mm)	Weight (g)	Piab No.
<b>W04-015-10</b>	4	R 1/8"	16.5	16	0214751
<b>W04-M5-10</b>	4	M5 x .8	19.1	11	0214752
<b>W06-015-10</b>	6	R 1/8"	16.5	17	0214753
<b>W06-025-10</b>	6	R 1/4"	18.8	30	0214754
<b>W06-M5-10</b>	6	M5 x .8	19.1	11	0214755
<b>W08-015-10</b>	8	R 1/8"	16.5	27	0214756
<b>W08-025-10</b>	8	R 1/4"	18.8	35	0214757

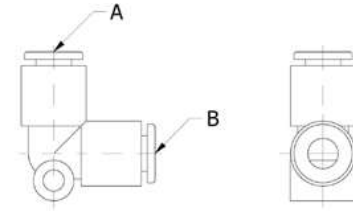
**MALE ELBOW**



- Accepts FEP, PFA, nylon, soft nylon, and polyurethane tubes.
  - Fluid: air, water.
  - Operating pressure range: -100kPa~1MPa.
  - Release collar allows easy removal of tubing without causing damage to the tube.
  - This product is not intended for use in potable water systems.
  - Fits standard female threads: BSP, BSPT, G, Rc.
- \* Sold in packs of 10.

	A(Tubing Size)	B(Male Thread)	Weight (g)	Piab No.
<b>L04-M3-10</b>	4	M3 x .5	2.4	0214514
<b>L04-M5-10</b>	4	M5 x .8	3.4	0212980
<b>L04-O15-10</b>	4	R 1/8"	8	0212981
<b>L04-O25-10</b>	4	R 1/4"	13	0214513
<b>L06-M5-10</b>	6	M5 x .8	3.6	0212982
<b>L06-O15-10</b>	6	R 1/8"	5	0212983
<b>L06-O25-10</b>	6	R 1/4"	4	0212984
<b>L08-O15-10</b>	8	R 1/8"	6	0212985
<b>L08-O25-10</b>	8	R 1/4"	13	0212986
<b>L08-O35-10</b>	8	R 3/8"	25	0214517

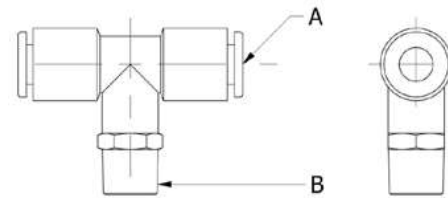
**UNION ELBOWS**



- Accepts FEP, PFA, nylon, soft nylon, and polyurethane tubes.
  - Fluid: air, water.
  - Operating pressure range: -100kPa~1MPa.
  - Release collar allows easy removal of tubing without causing damage to the tube.
  - This product is not intended for use in potable water systems.
- \* Sold in packs of 10.

	A(Tubing Size)	B (Tubing Size)	Weight (g)	Piab No.
<b>L04-O0-10</b>	4	4	3	0214512
<b>L06-O0-10</b>	6	6	3	0214515
<b>L08-O0-10</b>	8	8	8	0214516

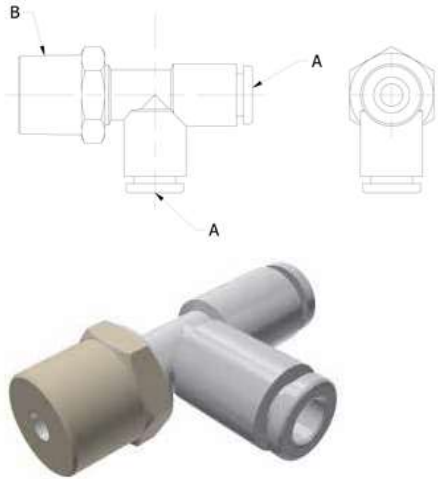
**MALE BRANCH TEE**



- Accepts FEP, PFA, nylon, soft nylon, and polyurethane tubes.
  - Fluid: air, water.
  - Operating pressure range: -100kPa~1MPa.
  - Release collar allows easy removal of tubing without causing damage to the tube.
  - This product is not intended for use in potable water systems.
- \* Sold in packs of 10.

	A(Tubing Size)	B(Tubing Size)	Weight (g)	Piab No.
<b>T04-M5-10</b>	4	M5 x .8	4	0214689
<b>T04-O15-10</b>	4	R 1/8"	5	0214687
<b>T06-M5-10</b>	6	M5 x .8	5	0214694
<b>T06-O15-10</b>	6	R 1/8"	6	0214691
<b>T06-O25-10</b>	6	R 1/4"	20	0214692
<b>T08-O15-10</b>	8	R 1/8"	14	0214696
<b>T08-O25-10</b>	8	R 1/4"	23	0214697

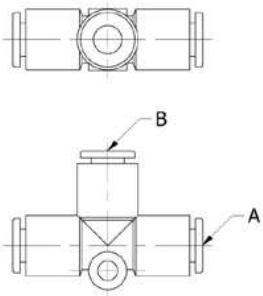
**MALE RUN TEE**



- Accepts FEP, PFA, nylon, soft nylon, and polyurethane tubes.
  - Fluid: air, water.
  - Operating pressure range: -100kPa~1MPa.
  - Release collar allows easy removal of tubing without causing damage to the tube.
  - This product is not intended for use in potable water systems.
- \* Sold in packs of 10.

	A(Tubing Size)	B(Male Thread)	Weight (g)	Piab No.
<b>Y04-M5-10</b>	4	M5 x .8	4	0214791
<b>Y04-01S-10</b>	4	R 1/8"	9	0214789
<b>Y04-02S-10</b>	4	R 1/4"	20	0214790
<b>Y06-M5-10</b>	6	M5 x .8	4.6	0214794
<b>Y06-01S-10</b>	6	R 1/8"	6.2	0214792
<b>Y06-02S-10</b>	6	R 1/4"	4.7	0214793
<b>Y08-01S-10</b>	6	R 1/8"	15	0214795
<b>Y08-02S-10</b>	6	R 1/4"	24	0214796

**UNION TEE**

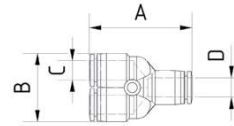


- Accepts FEP, PFA, nylon, soft nylon, and polyurethane tubes.
  - Fluid: air, water.
  - Operating pressure range: -100kPa~1MPa.
  - Release collar allows easy removal of tubing without causing damage to the tube.
  - This product is not intended for use in potable water systems.
- \* Sold in packs of 10.

	A(Tubing Size)	B(Tubing Size)	Weight (g)	Piab No.
<b>T04-00-10</b>	4	4	3	0214686
<b>T04-06-10</b>	4	6	3	0214688
<b>T06-00-10</b>	6	6	7	0214690
<b>T06-08-10</b>	6	8	8	0214693
<b>T08-00-10</b>	8	8	7	0214695



**UNION Y**

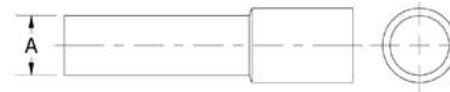


- Accepts FEP, PFA, nylon, soft nylon, and polyurethane tubes.
  - Fluid: air, water.
  - Operating pressure range: -100kPa~1MPa.
  - Release collar allows easy removal of tubing without causing damage to the tube.
  - This product is not intended for use in potable water systems.
- \* Sold in packs of 10.

	A(Tubing Size)	A2(Tubing Size)	Weight (g)	Piab No.
<b>U04-00-10</b>	4	4	8	0214720
<b>U04-06-10</b>	4	6	7	0214721
<b>U06-00-10</b>	6	6	10	0214722
<b>U06-08-10</b>	6	8	12	0214723
<b>U08-00-10</b>	8	8	12	0214724



**PLUG**

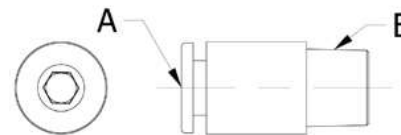


- Plugs for one-touch fittings.
  - Ideal for testing or for blocking off unnecessary air lines.
- \* Sold in packs of 10.



	A	Weight (g)	Piab No.
<b>P-04-10</b>	4	7	0214556
<b>P-06-10</b>	6	10	0214557
<b>P-08-10</b>	8	12	0214558
<b>P-10-10</b>	10	3.5	0214559
<b>P-12-10</b>	12	5	0214560

**INTERNAL HEX MALE CONNECTOR**

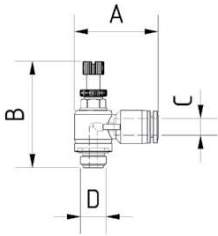


- Accepts FEP, PFA, nylon, soft nylon, and polyurethane tubes.
  - Fluid: air, water.
  - Operating pressure range: -100kPa~1MPa.
  - Release collar allows easy removal of tubing without causing damage to the tube.
  - This product is not intended for use in potable water systems.
  - Can be used in tight spaces where wrenches or sockets won't fit.
- \* Sold in packs of 10.

	A(Tubing Size)	B(Male Thread)	Weight (g)	Piab No.
<b>S04-M5-10</b>	4	M5 x .8	3	0214602
<b>S04-01S-10</b>	4	R 1/8"	8	0214601
<b>S06-M5-10</b>	6	M5 x .8	4	0214605
<b>S06-01S-10</b>	6	R 1/8"	6	0214603
<b>S06-02S-10</b>	6	R 1/4"	13	0214604
<b>S08-01S-10</b>	8	R 1/8"	12	0214606
<b>S08-02S-10</b>	8	R 1/4"	11	0214607



**ELBOW JOINT**

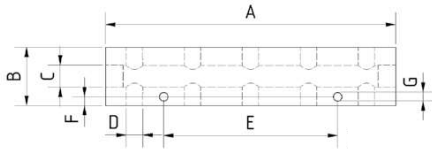


- Elbow screwed joints with flow control.

	A	B	C	D	Piab No.
<b>WEVD - M5 - 4</b>	25.1	30.2	4	M5	0213466
<b>WEVD - M5 - 6</b>	27.8	30.2	6	M5	0213467
<b>WEVD - 18 - 6</b>	31.2	40.1	6	G1/8	0213464



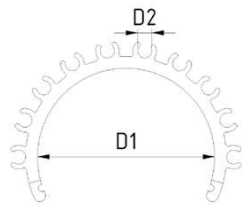
**DISTRIBUTOR BLOCK**



	A	B	C	D	E	F	G	Depth	Piab No.
<b>VB - 8G1/8 - 2G1/4</b>	85	25	G1/4	G1/8	13	6	5.5	20	0213461
<b>VB - 10G1/8 - 2G1/4</b>	150	30	G1/4	G1/8	90	4.5	4.5	20	0213460



**HOSE-SORTING-CLIPS**

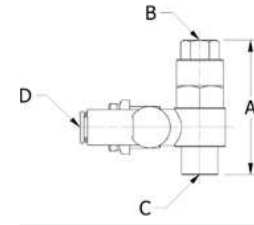


- Material: polyamide.
- Further dimensions available as needed.

	A	B	Tube Number	Piab No.
<b>SSK16 - 6 - 3</b>	16	6	3	0213265
<b>SSK25 - 6 - 5</b>	25	6	5	0213266
<b>SSK40 - 6 - 7</b>	40	6	7	0213267



**FLOW CONTROL WITH PILOT CHECK**

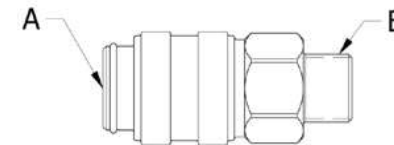


- One-touch flow control.
- Allows for fine control of gripper and cylinder speed without loss of clamping pressure.
- Can be used on inlet or exhaust ports.
- Pilot Check Valve gives added security by providing a back up air supply.



	A	B (Female Thread)	C (Male Thread)	D (Tubing Size)	Max Operating Pressure (bars)	Min Operating Pressure (bars)	Flow Rate	Piab No.
<b>ASP330F-01-06S</b>	40	M5	R 1/8"	6	10	1	180	0214170
<b>ASP430F-02-06S</b>	49	G 1/8"	R 1/4"	6	10	1	330	0214171
<b>ASP430F-02-08S</b>	49	G 1/8"	R 1/4"	8	10	1	350	0214172

**QUICK RELEASE COUPLING**



- Quick release couplings for faster tool changes.
- Replacement couplings for SWM series Quick Change Mounting Chucks.

	A (Male Thread)	B (Series)	Weight (g)	Piab No.
<b>92-5002</b>	M5 x .8	20	8	0212954
<b>92-0204</b>	R 1/8"	21	27	0212955
<b>92-0406</b>	R 1/4"	26	73	0212956

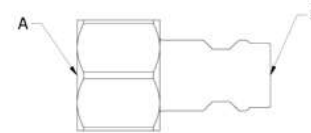
**92-5002**  
Product Code: 92-5002

**92-0204**  
Product Code: 92-0204

**92-0406**  
Product Code: 92-0406



**QUICK RELEASE PLUG**

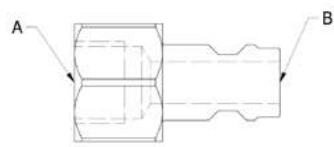


- Quick Release plugs for fast tool changes.
- EOAT plugs for mating SWM couplings.
- \* Sold in packs of 10.

	A (Female Thread)	B (Series)	Weight (g)	Piab No.
<b>94-4902-10</b>	M5 x .8	20	26	0212951
<b>94-0104-10</b>	G 1/8"	21	143	0212952
<b>94-0306-10</b>	G 1/4"	26	246	0212953



**QUICK RELEASE PLUG WITH HOSE CONNECTOR**

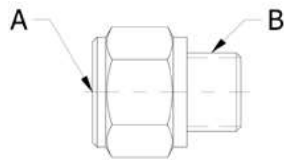


- Quick Release plugs for fast tool changes.
- EOAT plugs for mating SWM couplings.
- \* Sold in packs of 10.

	A (Tubing Size)	B (Series)	Weight (g)	Piab No.
<b>94-0403</b>	4	20	50	0214154
<b>94-0604</b>	6	21	150	0214155
<b>94-0806</b>	8	26	180	0214156



**HEX BUSHING**



- Fits male threads BSP, BSPT, G, R.
- Fits female threads BSP, BSPT, G, Rc.

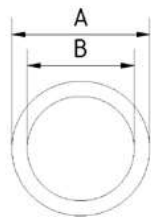
	A (Female Thread)	B (Male Thread)	Piab No.
<b>66-0201-10</b>	G 1/8"	R 1/8	0214145
<b>66-0403-10</b>	G 1/4"	R 1/4	0214147

**66-0201-10**  
Product Code: 66-0201-10

**66-0403-10**  
Product Code: 66-0403-10



**SEALING RINGS**



**FB-DR-14-K**  
Product Code: FB-DR-14-K  
• Sealing ring PVC for G 1/4

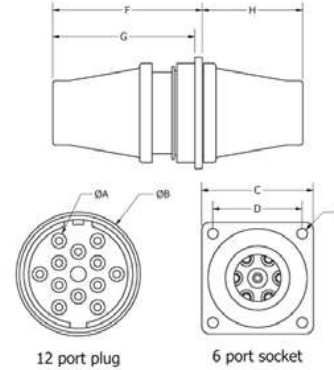
**FB-DR-18-K**  
Product Code: FB-DR-18-K  
• Sealing ring PVC for G 1/8

**FB-DR-38-K**  
Product Code: FB-DR-38-K  
• Sealing ring PVC for G 3/8

	A	B	Piab No.
<b>FB-DR-14-K</b>	18	13.2	0216048
<b>FB-DR-18-K</b>	13	10.1	0216049
<b>FB-DR-38-K</b>	22	16.8	0216050



**MULTI-PORT TUBE CONNECTOR**



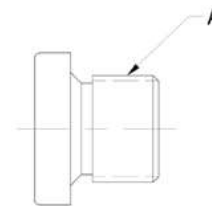
- Quick change all your hose connections with one plug.
- Cover can be removed from socket side for panel mounting.
- Working Pressure up to 1.0 MPa.

Plugs	Ports	A	B	C	D	E	F	G	H	Weight (g)	Piab No.
<b>DMC-04-06P</b>	6	4	37	-	-	-	60	56	-	87	0214184
<b>DMC-04-06S</b>	6	4	44	44	36	4.5	-	-	41	85	0214185
<b>DMC-06-06P</b>	6	6	37	-	-	-	60	56	-	84	0214188
<b>DMC-06-06S</b>	6	6	44	44	36	4.5	-	-	41	82	0214189
<b>DMC-04-12P</b>	12	4	47	-	-	-	70	56	-	126	0214186
<b>DMC-04-12S</b>	12	4	53	55	43	4.5	-	-	51	115	0214191
<b>DMC-06-12P</b>	12	6	47	-	-	-	70	56	-	120	0214190

12 port plug      6 port socket



**PIPE PLUG**

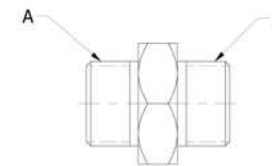


- Fits female threads BSP, BSPT, G.
- \* Sold in packs of 10.

	A (Female Thread)	Weight (g)	Piab No.
<b>21-50-10</b>	M5	20	0214131
<b>23-02-10</b>	G 1/8"	68	0214132
<b>23-04-10</b>	G 1/4"	155	0214133



**MULTI-PORT TUBE CONNECTOR**

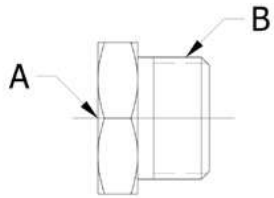


- Fits female threads BSP, BSPT, G, Rc.
- \* Sold in packs of 10.

	A (Male Thread)	B (Male Thread)	Weight (g)	Piab No.
<b>41-5050-10</b>	M5 x .8	M5 x .8	25	0214134
<b>42-0202-10</b>	G 1/8"	G 1/8"	88	0214135
<b>43-0250-10</b>	G 1/8"	M5 x .8	76	0214137
<b>42-0404-10</b>	G 1/4"	G 1/4"	161	0214136
<b>43-0402-10</b>	G 1/4"	G 1/8"	149	0214138
<b>43-0604-10</b>	G 3/8"	G 1/4"	200	0214139



**REDUCTION BUSHING**



- Fits male threads BSP, BSPT, G, R.
  - Fits female threads BSP, BSPT, G, Rc.
- \*Sold in packs of 10.

	A (Female Thread)	B (Male Thread)	Weight (g)	Piab No.
<b>70-5041-10</b>	M3 x .5	M5 x .8	11	0214153
<b>70-0249-10</b>	M5 x .8	R 1/8"	73	0214150
<b>70-0401-10</b>	G 1/8"	R 1/4"	122	0214151
<b>66-2050-10</b>	G 1/8"	M5 x .8	75	0214149
<b>66-0401-10</b>	G 1/4"	R 1/8"	145	0214146
<b>70-0604-10</b>	G 1/4"	R 3/8"	131	0214152
<b>66-0604-10</b>	G 3/8"	R 1/4"	199	0214148

**70-5041-10**

Product Code: 70-5041-10



**70-0249-10**

Product Code: 70-0249-10



**70-0401-10**

Product Code: 70-0401-10



**66-2050-10**

Product Code: 66-2050-10



**66-0401-10**

Product Code: 66-0401-10



**70-0604-10**

Product Code: 70-0604-10



**66-0604-10**

Product Code: 66-0604-10

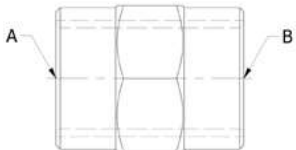


**66-0403-10**

Product Code: 66-0403-10



**PIPE COUPLING**



- Fits male threads BSP, BSPT, G, R.
- \* Sold in packs of 10.

	A(Female Thread)	B(Female Thread)	Weight (g)	Piab No.
<b>60-49-10</b>	M5 x .8	M5 x .8	31	0214143
<b>60-5002-10</b>	G 1/8"	M5 x .8	93	0214144
<b>60-0204-10</b>	G 1/4"	G 1/8"	145	0214142



**PNEUMATIC TUBING**



- Flexible pneumatic hose tubing.
- Polyurethane material reduces "kinking".
- Supports pressurized air up to 0.8 Mpa (116 psi).

	Color	Outer Diameter (mm)	Inner Diameter (mm)	Length (m)	Weight (g)	Piab No.
<b>03-0403-100</b>	Black	4	2.5	100	1320	0214122
<b>03-0403-20</b>	Black	4	2.5	20	600	0214123
<b>03-0403B-100</b>	Blue	4	2.5	100	1338	0212988
<b>03-0403B-20</b>	Blue	4	2.5	20	180	0212987
<b>03-0403Y-100</b>	Yellow	4	2.5	100	1338	0212990
<b>03-0403Y-20</b>	Yellow	4	2.5	20	700	0212989
<b>03-0604-100</b>	Black	6	4	100	2330	0214124
<b>03-0604-20</b>	Black	6	4	20	465	0214125
<b>03-0604B-100</b>	Blue	6	4	100	5040	0212992
<b>03-0604B-120</b>	Blue	6	4	20	440	0212991
<b>03-0604Y-100</b>	Yellow	6	4	100	2380	02112994
<b>03-0604Y-20</b>	Yellow	6	4	20	440	0212993
<b>03-0805-100</b>	Black	8	5	100	4260	0214126
<b>03-0805-20</b>	Black	8	5	20	795	0214217
<b>03-0805B-100</b>	Blue	8	5	100	3945	0212996
<b>03-0805B-120</b>	Blue	8	5	20	836	0212995
<b>03-0805Y-100</b>	Yellow	8	5	100	3990	0212998
<b>03-0805Y-20</b>	Yellow	8	5	20	763	0212997
<b>03-1065-20</b>	Black	10	6.5	20	1390	0214128
<b>03-1208-20</b>	Black	12	8	20	1570	0214129
<b>TU0425BU2-100x108</b>	Clear Blue	4	2.5	100	1320	0215642
<b>TU0425G2-100x108</b>	Clear Green	4	2.5	100	1320	0215643
<b>TU0425PU2-100x108</b>	Clear Purple	4	2.5	100	1320	0215644
<b>TU0425R2-100x108</b>	Clear Red	4	2.5	100	1320	0215645
<b>TU0425Y2-100x108</b>	Clear Yellow	4	2.5	100	1320	0215646
<b>TU0425YR1-100x108</b>	Clear Orange	4	2.5	100	1320	0215647
<b>TU0604BU2-100x108</b>	Clear Blue	6	4	100	5040	0215648
<b>TU0604G2-100x108</b>	Clear Green	6	4	100	5040	02015649
<b>TU0604PU2-100x108</b>	Clear Purple	6	4	100	5040	0215650
<b>TU0604R2-100x108</b>	Clear Red	6	4	100	5040	0215651
<b>TU0604Y2-100x108</b>	Clear Yellow	6	4	100	5040	0215652
<b>TU0604YR1-100x108</b>	Clear Orange	6	4	100	5040	0215653



**TUBING CUTTER**

**TC-21 TUBING CUTTER**

Product Code: TC-21  
Piab No. 0214708

- 6 cutting edges on each blade insert.
- One handed operation and cutter lock.
- Integrated 1m tape measure.
- Max Tubing Size: 15mm / 1/2".



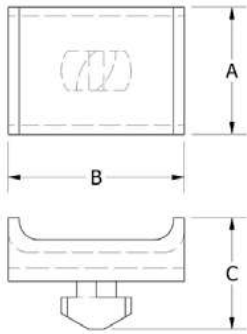
**TC-C BLADE FOR TC-21 TUBE CUTTER**

Product Code: TC-C  
Piab No. 0214709

- TC-C Blade for TC-21 Tube Cutter.
- Sold in packs of 10.



**CABLE AND HOSE**



**CTM-15**

Product Code: CTM-15

- Convenient wiring and tubing tie-down twists tightly into standard frame profile.
- Easily movable and removable.
- CTM-15 designed to fit into L, X, & D profiles.
- Sold in packs of 10.

**CTM-25**

Product Code: CTM-25

- Convenient wiring and tubing tie-down twists tightly into standard frame profile.
- Easily movable and removable.
- CTM-25 designed to fit into JX & HX profiles.
- Sold in packs of 10.



	A	B	C	Piab No.
CTM-15	12	15	16	0214179
CTM-25	18	25	16	0214180