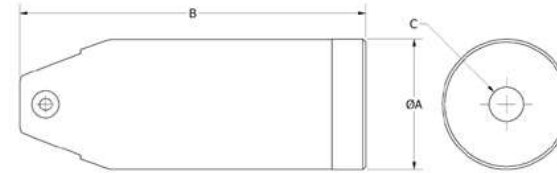




Cutting and Degating

Cutting and Degating

NIPPER BODY



- Hand-operated sprue cutters come with safety levers.
 - Standard and special blades available.
- *Blades sold separately.

	Cutting Capacity	A	B	C	Weight (g)	Air Consumption	Working Air Pressure	Blade Category	Weight (g)	Plab No.
MR10	Soft Plastic ø5 / Hard Plastic ø4	36	124	G 1/4"	150	116 cm ³ /stroke	5-6 bars	I	200	0214541
MR20	Soft Plastic ø7 / Hard Plastic ø5	45	140	G 1/4"	260	230 cm ³ /stroke	5-6 bars	I	340	0214542
MR30A	Soft Plastic ø10 / Hard Plastic ø6.5	56	176	G 1/4"	460	584 cm ³ /stroke	5-6 bars	I	520	0214543
MR50FK	Soft Plastic ø12 / Hard Plastic ø6.5	75	197	G 1/4"	1040	1100 cm ³ /stroke	5-6 bars	I	1170	0215491
MP35A	Soft Plastic ø13 / Hard Plastic ø6.5	56	249	G 1/4"	790	956 cm ³ /stroke	bars 5-6	I	830	0214540

* Soft Plastics are PP & PE ** Hard Plastics are ABS, Polycarbonates, Acrylic resin, POM & PS

MR10

Product Code: MR10



MR20

Product Code: MR20



MR30A

Product Code: MR30A



MP35A (HEAVY DUTY)

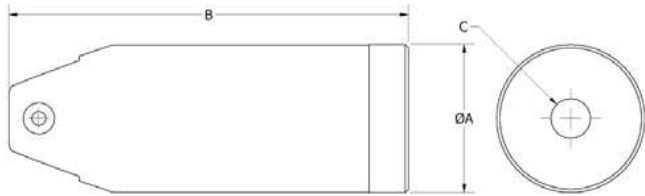
Product Code: MP35A



We offer a complete line of high quality hand cutters, pneumatic cutters, EOAT mounted cutters, standard and custom degaters, and more.

- Appropriate levels of **precision and efficiency** on all our products
- Hand-operated cutters are all equipped with **safety levers**
- Expansive product and engineering **knowledge**
- Blades are made of HS steel and can be re-sharpened. Carbide tipped blades are available upon request.

AIR NIPPER BODY

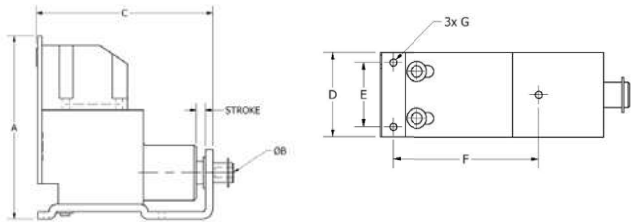


- Automatic Type is fixture mountable.
 - Standard and special blades available.
- *Blades sold separately.

	Cutting Capacity	A	B	C	Weight (g)	Air Consumption	Working Air Pressure	Blade Category	Weight (g)	Piab No.
MR3M	Soft Plastic ø1	20	112	G 1/4"	60	35 cm ³ /stroke	4-5 bars	I	70	0214544
MR5M	Soft Plastic ø2	30	103	G 1/4"	100	64 cm ³ /stroke	4-5 bars	I	100	0214545
MR10M	Soft Plastic ø5 Hard Plastic ø4	36	124	G 1/4"	150	116 cm ³ /stroke	5-6 bars	I	160	0213210
MR20M	Soft Plastic ø7 Hard Plastic ø5	45	140	G 1/4"	260	230 cm ³ /stroke	5-6 bars	I	270	0213211
MR30AM	Soft Plastic ø10 Hard Plastic ø6.5	56	176	G 1/4"	460	584 cm ³ /stroke	5-6 bars	I	470	0213212
MR50FM	Soft Plastic ø12 Hard Plastic ø6.5	75	197	G 1/4"	1040	1100 cm ³ /stroke	5-6 bars	I	1040	0213213

* Soft Plastics are PP & PE ** Hard Plastics are ABS, Polycarbonates, Acrylic resin, POM & PS

SLIDE, CUT & COMPACT TYPE BODY

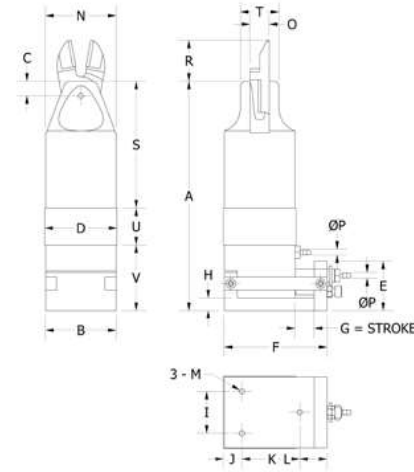


- Separate ports for cutter slide and blade activation.
 - Slide function moves blades flush to part.
- *Blades sold separately.



	A	B	C	D	E	F	G	Stroke	Blade Category	Max. Sprue Dia.	Weight (g)	Piab No.
ME 3	77	4	71	20	14	21	M3	3	II	1	170	0214530
ME 5	79	4	78	29	22	23	M3	3	II	1.2	290	0214532
ME 10	102	4	90	26	26	36	M3	3	II	2.5	540	0214528
ME 20	116	4	104	44	26	36	M4	5	II	4.5	810	0214529
ME 30	149	4	131	56	26	50	M4	5	II	6	1490	0214531

SLIDE & CUT AIR NIPPER BODY



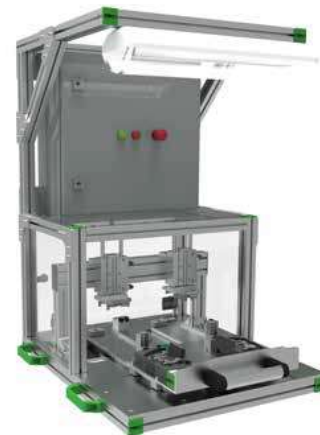
- Separate Ports for cutter slide and blade activation.
 - Slide function moves blades flush to part.
 - Utilizes a wider variety of blades than the ME cutter.
 - Only one air circuit is needed when Pneumatic Timing Unit (TU-01) is used.
- *Blades sold separately.



	A	B	C	D	E	F	G	H	I	J	K	L	M	N	O	P	R	S	T	U	V	Piab No.
ML-10	128	35	7	36	31	63	10	8	26	11	31	17	M3	35	9	4	19	71	18	16	41	0213218
ML-20	143	44	9	45	31	64	10	8	26	11	36	17	M4	44	12	4	26	79	24	23	41	0213219
ML-30	184	55	15	56	33	76	10	8	26	14	38	24	M4	55	17	4	50	123	34	18	43	0213220

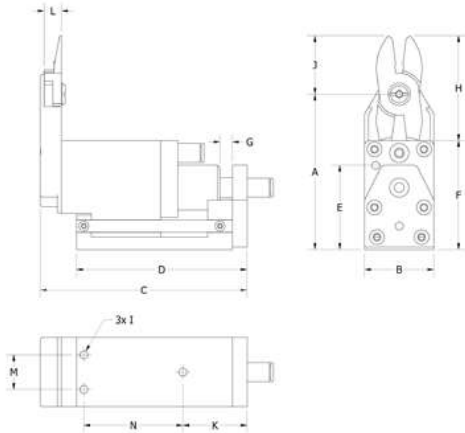
	Cutting Capacity	Weight(g)	Air Consumption (cm ³ /stroke)	Working Air Pressure (bars)	Blade Category	Weight (g)
ML-10	Soft Plastic ø5 Hard Plastic ø4	340	136	4-5	I	340
ML-20	Soft Plastic ø7 Hard Plastic ø5	500	250	5-6	I	500
ML-30	Soft Plastic ø10 Hard Plastic ø6.5	870	634	5-6	I	870

* Soft Plastics are PP & PE ** Hard Plastics are ABS, Polycarbonates, Acrylic resin, POM & PS



Piab designs and builds cutting stations with high safety standards for your manual or fully automatic cutting. Please reach out to your Piab contact to learn more about how we can support your need.

STROKE & CUT AIR NIPPER BODY



- Adjustable travel from 0-5mm.
- Separate Ports for cutter slide and blade activation.
- Only one air circuit is needed when Pneumatic Timing Unit (TU-01) is used.
- SN - Series (Pull and cut)
- SNP - Series (Push and cut)
- *Blades sold separately.

	A	B	C	D	E	F	G	H	I	J	K	L	M	N	Piab No.
SN-3	59	23	80	65	31	40	5	43	M4	24	25	7	12	37	0213232
SN-5	63	28	84	69	34	44	5	43	M4	24	26	7	14	40	0213233
SN-10	70	33	92	75	38	48	5	49	M4	27	27	9	18	45	0213238
SN-20	82	42	110	90	46	58	5	58	M4	35	28	12	22	58	0213239

	Cutting Capacity	Weight (g)	Air Consumption	Working Air Pressure (bars)	Blade Category
SN-3	Hard Plastic ø 2	228	46 cm ³ /stroke	4-5	V
SN-5	Hard Plastic ø 3	220	68 cm ³ /stroke	5-6	V
SN-10	Hard Plastic ø 4	379	117 cm ³ /stroke	4-5	V
SN-20	Hard Plastic ø 5	711	204 cm ³ /stroke	5-6	V

* Soft Plastics are PP & PE ** Hard Plastics are ABS, Polycarbonates, Acrylic resin, POM & PS

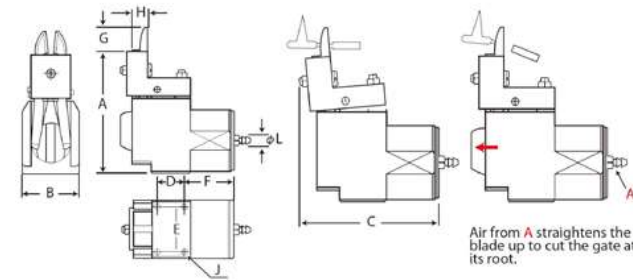
	A	B	C	D	E	F	G	H	I	J	K	L	M	N	Piab No.
SNP-3	59	23	75	65	31	40	5	43	M4	24	25	7	12	37	0213236
SNP-5	63	28	79	69	34	44	5	43	M4	24	26	7	14	40	0213237
SNP-10	70	33	87	75	38	48	5	49	M4	27	27	9	18	45	0213238
SNP-20	82	42	105	90	46	58	5	58	M4	35	28	12	22	58	0213239

	Cutting Capacity	Weight (g)	Air Consumption	Working Air Pressure (bars)	Blade Category
SNP-3	Hard Plastic ø 2	170	46 cm ³ /stroke	4-5	VI
SNP-5	Hard Plastic ø 3	220	68 cm ³ /stroke	5-6	VI
SNP-10	Hard Plastic ø 4	300	117 cm ³ /stroke	4-5	VI
SNP-20	Hard Plastic ø 5	595	204 cm ³ /stroke	5-6	VI

* Soft Plastics are PP & PE ** Hard Plastics are ABS, Polycarbonates, Acrylic resin, POM & PS



SLIDE & CUT AIR NIPPER BODY

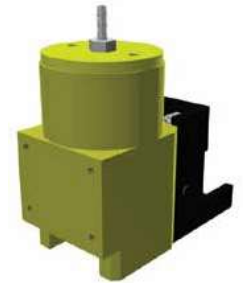


- Cutter body tilts up to the part before the blade cuts.
- Separate Ports for cutter tilt and blade activation.
- Only one air circuit is needed when Pneumatic Timing Unit (TU-01) is used.
- *Blades sold separately.

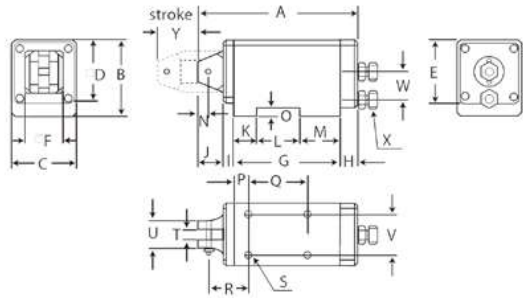
	A	B	C	D	E	F	G	H	J	L	Piab No.
MG-3	50	20	60	16	14	25	15	7	M3	4	0214539
MG-10	73	35	73	20	27	29	18	9	M3	4	0214537
MG-20	95	46	89	21	36	39	19	12	M4	4	0214538

	Cutting Capacity	Air Consumption	Working Air Pressure (bars)	Blade Category	Weight (g)
MG-3	Soft Plastic ø 2	21 cm ³ /stroke	4-5	III	80
MG-10	Soft Plastic ø 4	70 cm ³ /stroke	4-5	III	230
MG-20	Soft Plastic ø 6	213 cm ³ /stroke	4-5	III	420

* Soft Plastics are PP & PE ** Hard Plastics are ABS, Polycarbonates, Acrylic resin, POM & PS



TURTLE NECK CUTTER BODY



- Separate Ports for cutter slide and blade activation.
- As air is applied to the cutter's slide port, the movable part of the cutter body extends 30 mm.
- As air to the cutter's slide port is exhausted, the movable part of the cutter body returns.
- Only one air circuit is needed when Pneumatic Timing Unit (TU-01) is used.

*Blades sold separately.

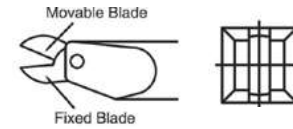


	A	B	C	D	E	F	G	H	I	J	K	L	M	N	O	P	Q	R	S	T	U	V	W	Plab No.
CF-5	124	54	44	44	47	28	80	15	10	19	16	33	31	7	8	10	45	32	M6	7	20	30	18	0214175
CF-10	146	64	54	54	54	34	100	15	10	21	26	40	34	7	8	16	60	40	M6	9	20	30	19	0214173
CF-20	165	70	62	62	62	42	117	15	10	23	26	55	36	9	8	16	75	40	M6	12	26	34	21	0214174

	Cutting Capacity	Weight(g)	Air Consumption	Working Air Pressure (bars)	Blade Category	Weight (g)
CF-5	Soft Plastic Ø2	570	490 cm ³ /stroke	5-6	I	570
CF-10	Soft Plastic Ø4/Hard Plastic Ø2.6	940	830 cm ³ /stroke	4-5	I	940
CF-20	Soft Plastic Ø7/Hard Plastic Ø5	1300	1160 cm ³ /stroke	5-6	I	1300

* Soft Plastics are PP & PE ** Hard Plastics are ABS, Polycarbonates, Acrylic resin, POM & PS

AIR CUTTERS BODY



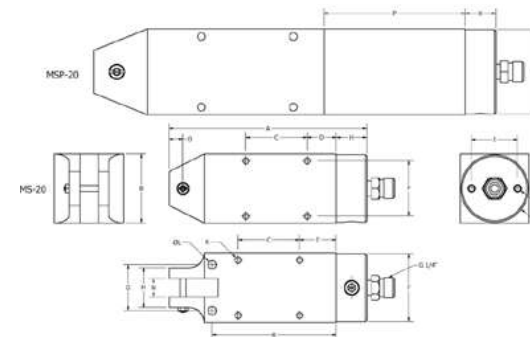
- Scissor style cutting method.
 - Blade has a movable and a fixed side.
- *Blades sold separately.



	Cutting Capacity	Body Length	Body ø	Weight (g)	Air Consumption	Working Air Pressure (bars)	Blade Category	Plab No.
CP-10M	Soft Plastic ø4/Hard Plastic ø2.6	132	220	220	116 cm ³ /stroke	4-5	IV	0214176
CP-20M	Soft Plastic ø7/Hard Plastic ø5	155	400	400	230 cm ³ /stroke	5-6	IV	0214177
CP-30M	Soft Plastic ø10/Hard Plastic ø6.5	185	630	630	584 cm ³ /stroke	5-6	IV	0214178

* Soft Plastics are PP & PE ** Hard Plastics are ABS, Polycarbonates, Acrylic resin, POM & PS

STANDARD SQUARE TYPE/PRESSURE BOOSTER TYPE



- Square body with mounting holes on all four sides.
 - MSP-Type has a pressure booster.
- *Blades sold separately.

Model	Weight(g)	Air Consumption	Air Pressure (mpa)
MS3	100	31	0.4-0.5
MS5	160	56	0.4-0.5
MS10	260	584 cm ³ /stroke	0.4-0.5
MS20	430	116 cm ³ /stroke	0.5-0.6
MS30	810	116 cm ³ /stroke	0.5-0.6
MSP20	650	116 cm ³ /stroke	0.4-0.5
MSP30	1,220	116 cm ³ /stroke	0.5-0.6

	A	B	C	D	E	F	G	H	I	J	K	L	M	N	O	P	Q	R	Plab No.
MS-3	89	20	40	19	24	16	14	21	14	M3	M3	3.3	20	/	/	-	-	71	0214548
MS-5	74	30	30	14	19	24	20	20	20	M4	M3	4.3	20	7	7	-	-	55	0214550
MS-10	93	36	30	18	23	28	28	20	24	M4	M4	4.3	20	9	7	-	-	65	0214546
MS-20	109	45	40	19	24	36	36	20	30	M5	M4	5.3	26	12	9	-	-	81	0214547
MS-30	150	56	60	20	30	46	46	20	40	M6	M5	5.3	36	17	15	-	-	110	0214549
MSP-20	109	45	40	19	24	36	36	20	30	M5	M4	5.3	26	12	9	87	45	81	0214554
MSP-30	150	56	60	20	30	46	46	20	40	M6	M5	5.3	36	17	15	92	56	110	0214555

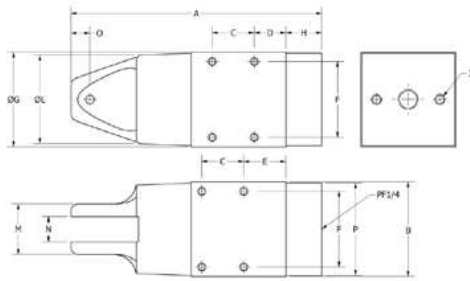
MS



MSP



SQUARE TYPE



- Square body for secure mounting.
- Cylindrical head fits in to tight spaces.
- *Blades sold separately.

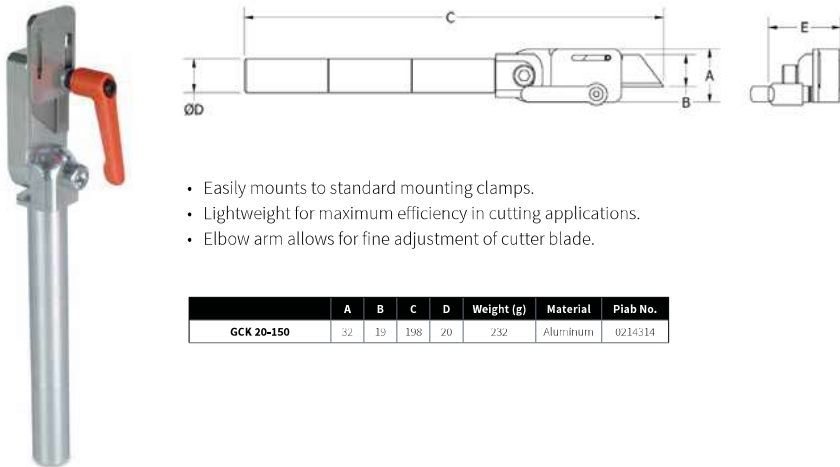


	A	B	C	D	E	F	G	H	I	J	K	L	M	N	O	P	Piab No.
MSK-10	87	36	18	10	15	28	35	17	24	M4	M4	33	18	9	7	35	0214551
MSK-20	102	45	20	15	20	36	44	17	30	M5	M4	42	24	12	9	44	0214552
MSK-30	141	56	27	18	26	46	55	17	40	M6	M5	52	34	17	15	55	0214553

	CuttingCapacity	Weight (g)	Air Consumption	Working Air Pressure (bars)	BladeCategory
MSK-10	Soft Plastic ø 4 / Hard Plastic ø 2.6	190	116 cm ³ /stroke	4-5	I
MSK-20	Soft Plastic ø 7 / Hard Plastic ø 5	340	230 cm ³ /stroke	5-6	I
MSK-30	Soft Plastic ø 10 / Hard Plastic ø 6.5	590	584 cm ³ /stroke	5-6	I

GCK 20-150 ADJUSTABLE GATE CUTTING KNIFE

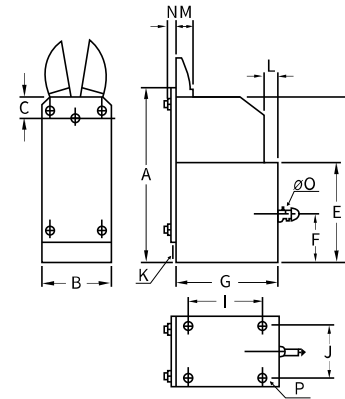
Product Code: GCK 20-150



- Easily mounts to standard mounting clamps.
- Lightweight for maximum efficiency in cutting applications.
- Elbow arm allows for fine adjustment of cutter blade.

	A	B	C	D	Weight (g)	Material	Piab No.
GCK 20-150	32	19	198	20	232	Aluminium	0214314

BODY VERTICAL TYPE



- Automatic Type is fixture mountable.
- Standard and special blades available.
- *Blades sold separately.



	Cutting Capacity Plastic ømm	Weight (g)	Air consumption (cm ³ /stroke)	Air pressure (MPa)	Blade Category	Piab No.
MF-3	1	71	30	0.4-0.5	II	0214535
MF-5	1.2	73	40	0.4-0.5	II	0214536
MF-10	2.5	96	90	0.4-0.5	II	0214533
MF-20	4.5	110	150	0.5-0.6	II	0214534

* Soft Plastics are PP & PE ** Hard Plastics are ABS, Polycarbonates, Acrylic resin, POM & PS

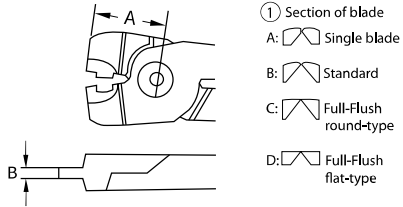
	A (mm)	B (mm)	C (mm)	D (mm)	E (mm)	F (mm)	G (mm)	I (mm)	J (mm)	K (mm)	L (mm)	M (mm)	N (mm)	O (mm)
MF-3	71	20	8	68	40	10	**	25	14	2	14	7	3.3	4
MF-5	73	29	9	69	41	20	44	30	22	2	22	7	4.0	4
MF-10	96	35	10	91	56	20	53	40	26	2	26	9	4.0	4
MF-20	110	44	13	102	60	20	64	45	34	2	34	12	3.0	4

CATEGORY I - STANDARD, CRIMPER BLADES
CRIMPER BLADE

AR8P-2.0

Product Code: AR8P-2.0

- Can be used on MR, MP cutters.
- 2.0mm crimping capacity for ring terminal use.

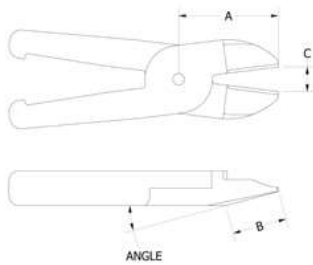


	A (Pivot Location)mm	B (Edge Length)mm	C (Blade Opening)mm	Cutter Body Size	Weight (g)	Piab No.
AR8P-2.0	34	6.5	7.0	MR30A	150	0215169

CATEGORY I - STANDARD TYPE, F

F10 BLADE

Product Code: F10

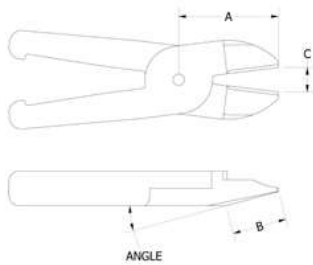


- Can be used on MR, MS cutters.

	A (Pivot Location)	B (Edge Length)	C (Blade Opening)	Blade Angle	Cutter Body Size	Weight (g)	Piab No.
F10	24	12	2.5	15°	3	35	0214224

F1 BLADE

Product Code: F1



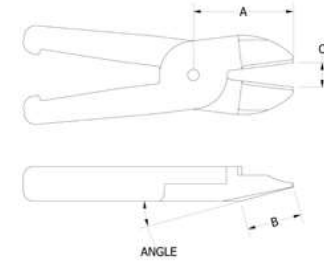
- Can be used on MR, CF, CL and MS cutters.

	A (Pivot Location)	B (Edge Length)	C (Blade Opening)	Blade Angle	Cutter Body Size	Weight (g)	Piab No.
F1	24	12	3	15°	5	39	0214223

CATEGORY I - STANDARD TYPE, F

F3 BLADE

Product Code: F3

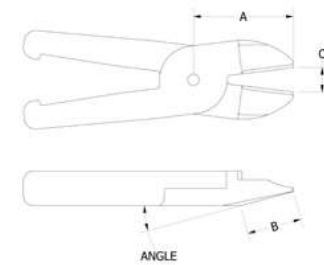


- Can be used on MR, ML, CF, CL, MS, MSK cutters.

	A (Pivot Location)	B (Edge Length)	C (Blade Opening)	Blade Angle	Cutter Body Size	Weight (g)	Piab No.
F3	27	12	4.5	25°	10	70	0213223

F5 BLADE

Product Code: F5

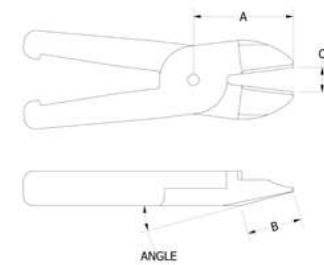


- Can be used on MR, ML, CF, CL, MS, MSP, MSK cutters.

	A (Pivot Location)	B (Edge Length)	C (Blade Opening)	Blade Angle	Cutter Body Size	Weight (g)	Piab No.
F5	35	15	8.5	15°	20	122	0213224

F9PF BLADE

Product Code: F9PF



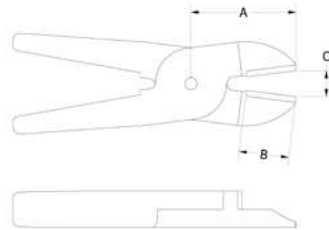
- Can be used on MR, MP, ML, MS, MSP, MSK cutters.

	A (Pivot Location)	B (Edge Length)	C (Blade Opening)	Blade Angle	Cutter Body Size	Weight (g)	Piab No.
F9PF	65	38	15	15°	30/50	397	0213225

CATEGORY I - STANDARD TYPE, FS

F10S BLADE

Product Code: F10S

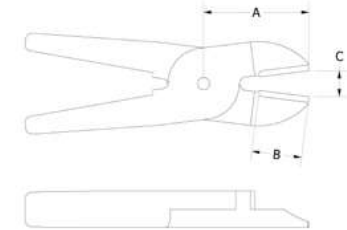


- Can be used on MR, MS cutters.

F10S	A (Pivot Location)	B (Edge Length)	C (Blade Opening)	Cutter Body Size	Weight (g)	Piab No.
F10S	24	12	2.5	3	33	0214227

F5S BLADE

Product Code: F5S

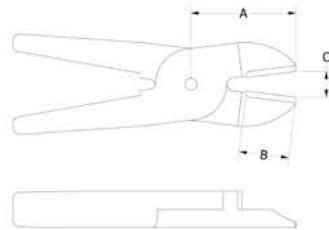


- Can be used on MR, ML, CF, CL, MS, MSK cutters.

F5S	A (Pivot Location)	B (Edge Length)	C (Blade Opening)	Cutter Body Size	Weight (g)	Piab No.
F5S	35	16	8.5	20	121	0213227

F1S BLADE

Product Code: F1S

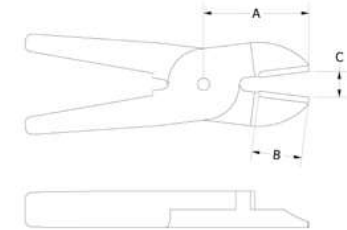


- Can be used on MR, CF, CL, MS cutters.

F1S	A (Pivot Location)	B (Edge Length)	C (Blade Opening)	Cutter Body Size	Weight (g)	Piab No.
F1S	24	12	3	5	40	0214230

F9PSF BLADE

Product Code: F9PSF

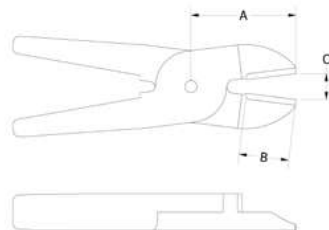


- Can be used on MR, MP, ML, MS, MSP, MSK cutters.

F9PSF	A (Pivot Location)	B (Edge Length)	C (Blade Opening)	Cutter Body Size	Weight (g)	Piab No.
F9PSF	65	37	15	30/50	416	0213228

F3S BLADE

Product Code: F3S



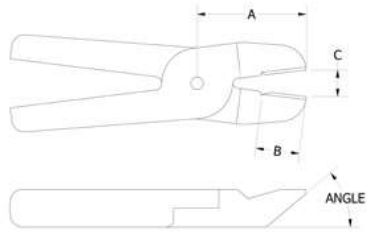
- Can be used on MR, ML, CF, CL, MS/MSP, MSK cutters.

F3S	A (Pivot Location)	B (Edge Length)	C (Blade Opening)	Cutter Body Size	Weight (g)	Piab No.
F3S	27	13	4.5	10	69	0213226

CATEGORY I - STANDARD TYPE, FD

FD10 BLADE

Product Code: FD10

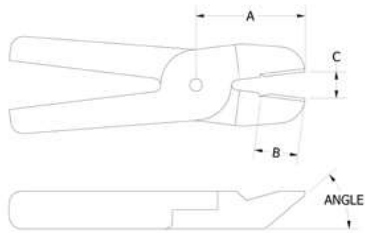


- Can be used on MR, MS cutters.

Blade No.	A (Pivot Location)	B (Edge Length)	C (Blade Opening)	Blade Angle	Cutter Body Size	Weight (g)	Piab No.
FD10	24	12	2.5	40°	3	35	0214257

FD1 BLADE

Product Code: FD1

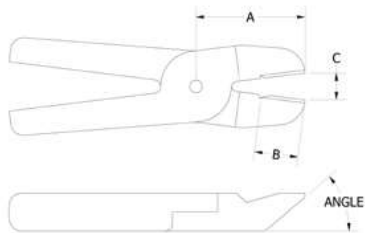


- Can be used on MR, CF, CL, MS cutters.

Blade No.	A (Pivot Location)	B (Edge Length)	C (Blade Opening)	Blade Angle	Cutter Body Size	Weight (g)	Piab No.
FD1	24	12	3.0	40°	5	40	0214256

FD3 BLADE

Product Code: FD3

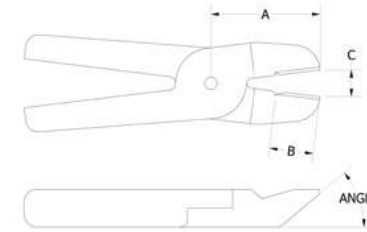


- Can be used on MR, ML, CF, CL, MS, MSK cutters.

Blade No.	A (Pivot Location)	B (Edge Length)	C (Blade Opening)	Blade Angle	Cutter Body Size	Weight (g)	Piab No.
FD3	27	13	4.5	40°	10	71	0213229

FD5 BLADE

Product Code: FD5

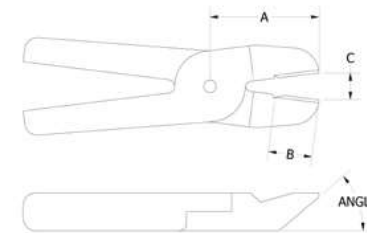


- Can be used on MR, ML, CF, CL, MS, MSP, MSK cutters.

Blade No.	A (Pivot Location)	B (Edge Length)	C (Blade Opening)	Blade Angle	Cutter Body Size	Weight (g)	Piab No.
FD5	35	16	8.5	40°	20	123	0213230

FD7 BLADE

Product Code: FD7

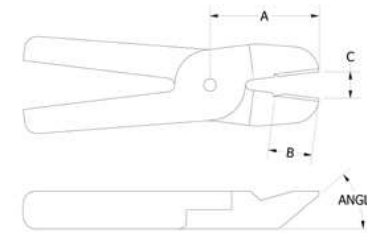


- Can be used on MR cutters.

Blade No.	A (Pivot Location)	B (Edge Length)	C (Blade Opening)	Blade Angle	Cutter Body Size	Weight (g)	Piab No.
FD7	27	12	3.4	40°	7	70	0214260

FD9P (F) BLADE

Product Code: FD9PF



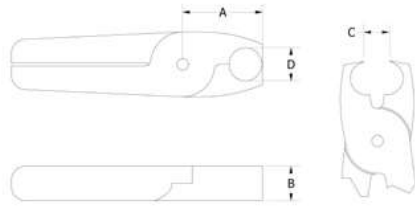
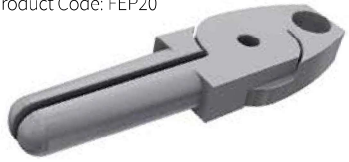
- Can be used on MR, MP, ML, CF, CL, MS, MSP, MSK cutters.

Blade No.	A (Pivot Location)	B (Edge Length)	C (Blade Opening)	Blade Angle	Cutter Body Size	Weight (g)	Piab No.
FD9PF	65	28	15.0	30°	30/50	415	0213231

CATEGORY I - STANDARD TYPE, FEP

FEP20 BLADE

Product Code: FEP20

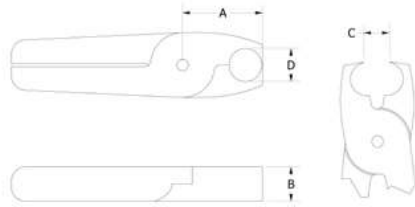


- Can be used on MR and MS cutters.

FEP20	A (Pivot Location)	B (Edge Length)	C (Blade Opening)	D	Cutter Body Size	Weight (g)	Piab No.
	70	7	2.3	7.5	3	40	0214264

FEP2 BLADE

Product Code: FEP2

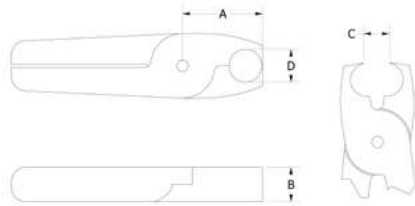


- Can be used on MR, CF, CL and MS cutters.

FEP2	A (Pivot Location)	B (Edge Length)	C (Blade Opening)	D	Cutter Body Size	Weight (g)	Piab No.
	70	7	3.1	7.5	5	41	0214263

FEP4 BLADE

Product Code: FEP4

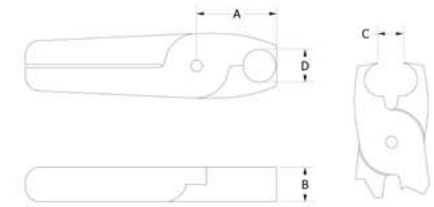


- Can be used on MR, ML, CF, CL, MS and MSK cutters.

FEP4	A (Pivot Location)	B (Edge Length)	C (Blade Opening)	D	Cutter Body Size	Weight (g)	Piab No.
	26	9	5.2	7.5	10	70	0214265

FEP6 BLADE

Product Code: FEP6

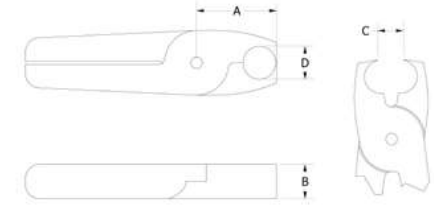


- Can be used on MR, ML, CF, CL, MS, MSP and MSK cutters.

FEP6	A (Pivot Location)	B (Edge Length)	C (Blade Opening)	D	Cutter Body Size	Weight (g)	Piab No.
	28	12	8.9	11.5	20	112	0214266

FEP7 BLADE

Product Code: FEP7

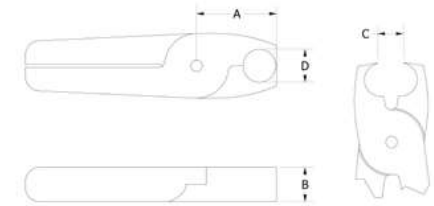


- Can be used on MR cutters.

FEP7	A (Pivot Location)	B (Edge Length)	C (Blade Opening)	D	Cutter Body Size	Weight (g)	Piab No.
	26	9	3.2	7.5	7	90	0214267

FEP10P(F) BLADE

Product Code: FEP10PF



- Can be used on MR, ML, MS, MSP and MSK cutters.

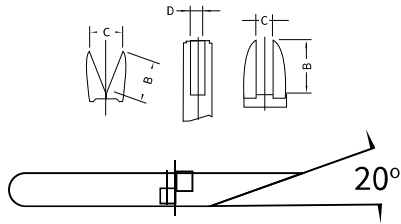
FEP10PF	A (Pivot Location)	B (Edge Length)	C (Blade Opening)	D	Cutter Body Size	Weight (g)	Piab No.
	34	17	6	11.5	30	353	0214262

Cutting and Degating

CATEGORY I - STANDARD TYPE, F5 FD EP

F55U23 CUSTOM BLADE

Product Code: F55U23

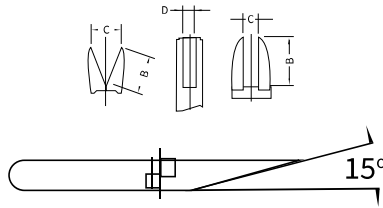


- Can be used on MR, ML, CF, CL, MS, MSP and MSK cutters.

	A (Pivot Location)	B (Edge Length)	C (Blade Opening)	D (Center Gap)	Blade Angle	Cutter Body Size	Weight (g)	Piab No.
F55U23	44	25	12	-	20°	20	145	0214235

F5X1 CUSTOM BLADE

Product Code: F5X1

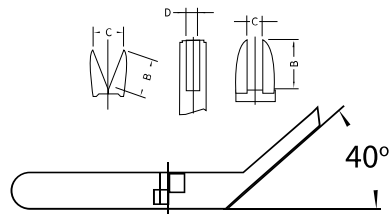


- Can be used on MR, ML, CF, CL, MS, MSP and MSK cutters.

	A (Pivot Location)	B (Edge Length)	C (Blade Opening)	D (Center Gap)	Blade Angle	Cutter Body Size	Weight (g)	Piab No.
F5X1	62	34	17	-	15°	20	211	0214244

F5NR329 CUSTOM BLADE

Product Code: F5NR329



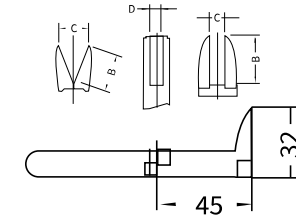
- Can be used on MR, ML, CF, CL, MS, MSP and MSK cutters.

	A (Pivot Location)	B (Edge Length)	C (Blade Opening)	D (Center Gap)	Blade Angle	Cutter Body Size	Weight (g)	Piab No.
F5NR329	52	33	7	-	40°	20	150	0214242

Cutting and Degating

F5NR279 CUSTOM BLADE

Product Code: F5NR279

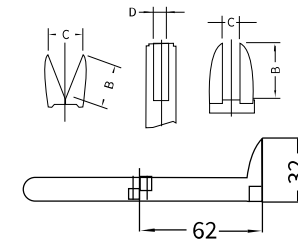


- Can be used on MR, ML, CF, CL, MS, MSP and MSK cutters.

	A (Pivot Location)	B (Edge Length)	C (Blade Opening)	D (Center Gap)	Blade Angle	Cutter Body Size	Weight (g)	Piab No.
F5NR279	45	23	11	-	90°	20	200	0214239

F5N62 CUSTOM BLADE

Product Code: F5N62

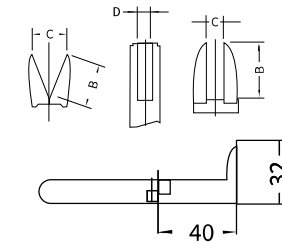


- Can be used on MR, ML, CF, CL, MS, MSP and MSK cutters.

	A (Pivot Location)	B (Edge Length)	C (Blade Opening)	D (Center Gap)	Blade Angle	Cutter Body Size	Weight (g)	Piab No.
F5N62	61	18	16	-	90°	20	261	0214238

F5NR325 CUSTOM BLADE

Product Code: F5NR325



- Can be used on MR, ML, CF, CL, MS, MSP and MSK cutters.

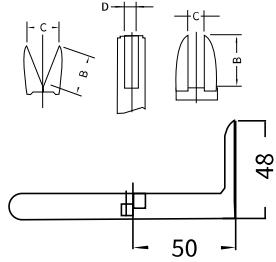
	A (Pivot Location)	B (Edge Length)	C (Blade Opening)	D (Center Gap)	Blade Angle	Cutter Body Size	Weight (g)	Piab No.
F5NR325	40	16	10	-	90°	20	221	0214241



Cutting and Degating

F5NR302 CUSTOM BLADE

Product Code: F5NR302

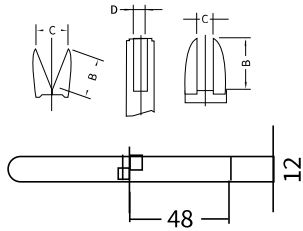


- Can be used on MR, ML, CF, CL, MS, MSP and MSK cutters.

	A (Pivot Location)	B (Edge Length)	C (Blade Opening)	D (Center Gap)	Blade Angle	Cutter Body Size	Weight (g)	Piab No.
F5NR302	50	34	11	8	90°	20	171	0214240

EP6XR322C F5 FD EP TYPE

Product Code: EP6XR322C

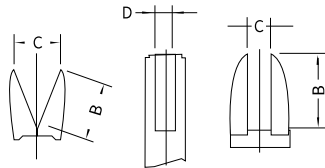


- Can be used on MR, ML, CF, CL, MS, MSP and MSK cutters.

	A (Pivot Location)	B (Edge Length)	C (Blade Opening)	D (Center Gap)	Blade Angle	Cutter Body Size	Weight (g)	Piab No.
EP6UR322C	48	12	11	8	90°	20	171	0214193

EP6XR322 F5 FD EP TYPE

Product Code: EP6XR322



- Can be used on MR, ML, CF, CL, MS, MSP and MSK cutters.

	A (Pivot Location)	B (Edge Length)	C (Blade Opening)	D (Center Gap)	Blade Angle	Cutter Body Size	Weight (g)	Piab No.
EP6UR322	48	6	11	8	90°	20	166	0214192

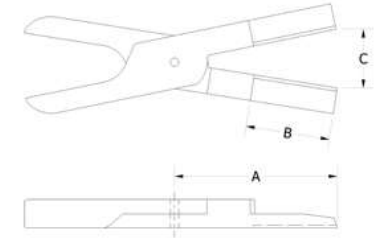
Cutting and Degating



CATEGORY I - STANDARD TYPE, F9

F9PZXR352F CUSTOM BLADE

Product Code: F9PZXR352F

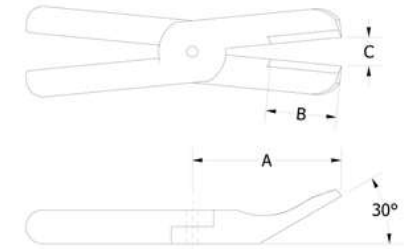


- Can be used on MR, ML, MS, MSP and MSK cutters.

	A (Pivot Location)	B (Edge Length)	C (Blade Opening) 30 Series	C (Blade Opening) 50 Series	D (Center Gap)	Blade Angle	Weight (g)	Piab No.
F9PZXR352F	100	50	16	35	~	0°	514	0214253

F9VPOF CUTTER BLADE

Product Code: F9VPOF

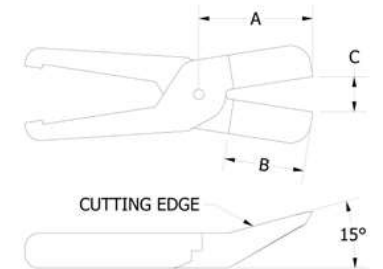


- Can be used on MR, ML, MS, MSP and MSK cutters.

	A (Pivot Location)	B (Edge Length)	C (Blade Opening) 30 Series	C (Blade Opening) 50 Series	D (Center Gap)	Blade Angle	Weight (g)	Piab No.
F9VPOF	60	40	15	20	~	30°	417	0214255

F9PVR48F CUSTOM BLADE

Product Code: F9PVR48F

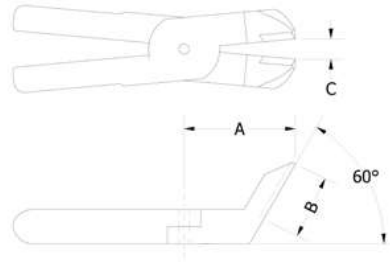


- Can be used on MR, ML, MS, MSP and MSK cutters.

	A (Pivot Location)	B (Edge Length)	C (Blade Opening) 30 Series	C (Blade Opening) 50 Series	D (Center Gap)	Blade Angle	Weight (g)	Piab No.
F9PVR48F	75	40	17	30	~	30°	383	0214251

F9PGM60F CUSTOM BLADE

Product Code: F9PGM60F

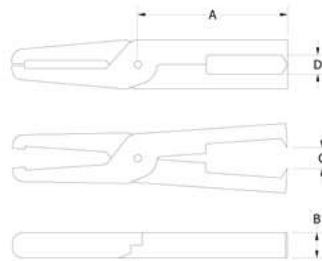


- Can be used on MR, ML, MS, MSP and MSK cutters.

	A (Pivot Location)	B (Edge Length)	C (Blade Opening) 30 Series	C (Blade Opening) 50 Series	D (Center Gap)	Blade Angle	Weight (g)	Piab No.
F9PVR48F	75	40	17	30	-	30°	383	0214248

F9PZXR261F CUSTOM BLADE

Product Code: F9PZXR261F

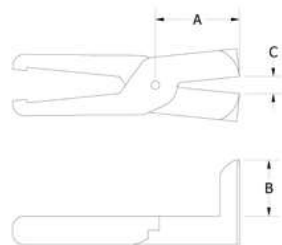


- Can be used on MR, ML, MS, MSP and MSK cutters.

	A (Pivot Location)	B (Edge Length)	C (Blade Opening) 30 Series	C (Blade Opening) 50 Series	D (Center Gap)	Blade Angle	Weight (g)	Piab No.
F9PZXR261F	110	17	14	34	13.5	85°	633	0214252

F9PNR25F CUSTOM BLADE

Product Code: F9PNR25F

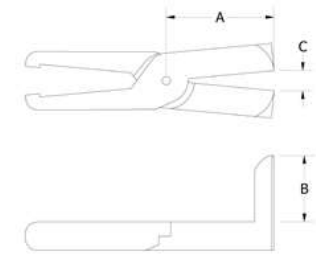


- Can be used on MR, ML, MS, MSP and MSK cutters.

	A (Pivot Location)	B (Edge Length)	C (Blade Opening) 30 Series	C (Blade Opening) 50 Series	D (Center Gap)	Blade Angle	Weight (g)	Piab No.
F9PNR25F	50	33	10	19	-	90°	467	0214249

F9PNR322F CUSTOM BLADE

Product Code: F9PNR322F

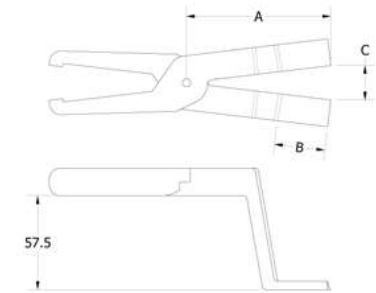
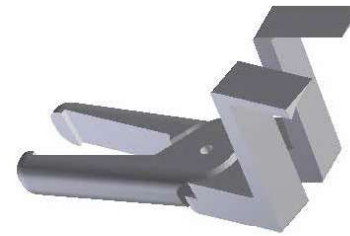


- Can be used on MR, ML, MS, MSP and MSK cutters.

	A (Pivot Location)	B (Edge Length)	C (Blade Opening) 30 Series	C (Blade Opening) 50 Series	D (Center Gap)	Blade Angle	Weight (g)	Piab No.
F9PNR322F	65	40	12	27	-	90°	525	0214250

F9PZXR393F CUSTOM BLADE

Product Code: F9PZXR393F



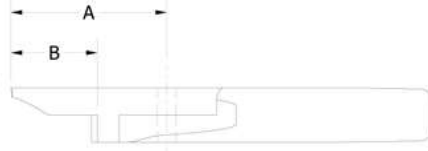
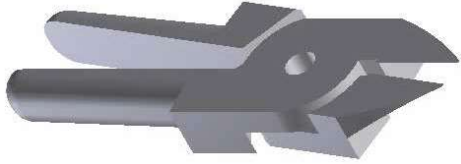
- Can be used on MR, ML, MS, MSP and MSK cutters.

	A (Pivot Location)	B (Edge Length)	C (Blade Opening) 30 Series	C (Blade Opening) 50 Series	D (Center Gap)	Blade Angle	Weight (g)	Piab No.
F9PZXR393F	80	30	21	37	-	0° (offset)	600	0214254

CATEGORY II - STANDARD TYPE, FE

F10E BLADE

Product Code: F10E

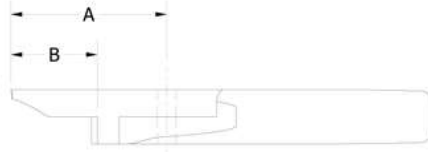


- Can be used on ME cutters.

F10E	A (Pivot Location)	B (Edge Length)	C (Blade Opening)	Cutter Body Size	Weight (g)	Piab No.
	24	13	3.5	3	26	0214225

F1E BLADE

Product Code: F1E

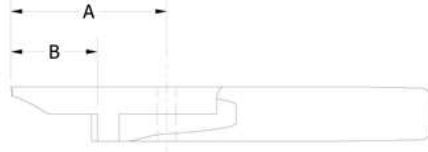


- Can be used on ME cutters.

F1E	A (Pivot Location)	B (Edge Length)	C (Blade Opening)	Cutter Body Size	Weight (g)	Piab No.
	24	12	5.5	5	40	0214228

F3E BLADE

Product Code: F3E

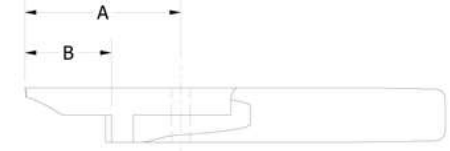


- Can be used on ME cutters.

F3E	A (Pivot Location)	B (Edge Length)	C (Blade Opening)	Cutter Body Size	Weight (g)	Piab No.
	27	13	7	10	59	0214232

F5E BLADE

Product Code: F5E

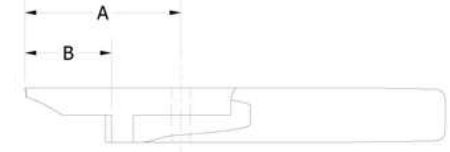


- Can be used on ME cutters.

F5E	A (Pivot Location)	B (Edge Length)	C (Blade Opening)	Cutter Body Size	Weight (g)	Piab No.
	35	18	9	20	118	0214236

F9E BLADE

Product Code: F9E



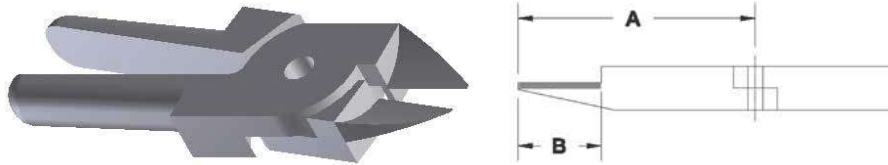
- Can be used on ME cutters.

F9E	A (Pivot Location)	B (Edge Length)	C (Blade Opening)	Cutter Body Size	Weight (g)	Piab No.
	65	39	15	30	384	0214246

CATEGORY II - STANDARD TYPE, FEK

F10EK BLADE

Product Code: F10EK

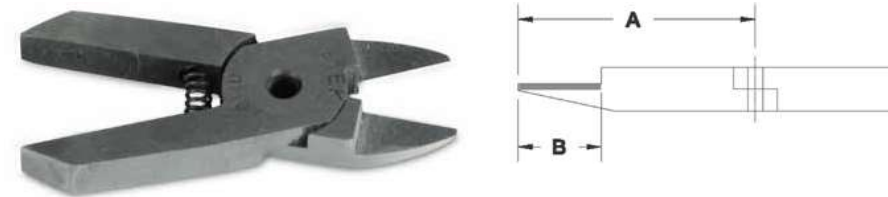


- Can be used on ME cutters.

F10EK	A (Pivot Location)	B (Edge Length)	C (Blade Opening)	Cutter Body Size	Weight (g)	Piab No.
	24	13	7	3	26	0214226

F11EK BLADE

Product Code: F11EK

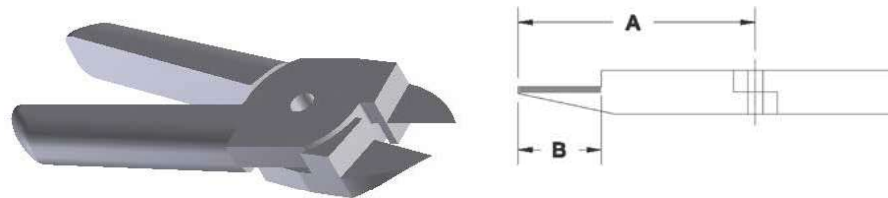


- Can be used on ME cutters.

F11EK	A (Pivot Location)	B (Edge Length)	C (Blade Opening)	Cutter Body Size	Weight (g)	Piab No.
	24	12	9	5	33	0214229

F3EK BLADE

Product Code: F3EK

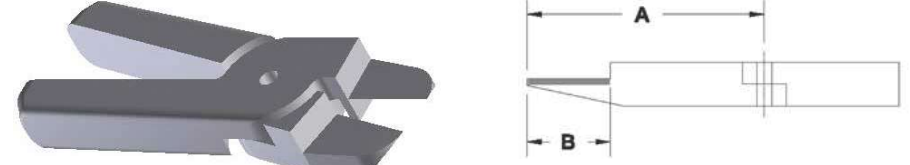


- Can be used on ME cutters.

F3EK	A (Pivot Location)	B (Edge Length)	C (Blade Opening)	Cutter Body Size	Weight (g)	Piab No.
	21	13	15	10	59	0214233

F5EK BLADE

Product Code: F5EK

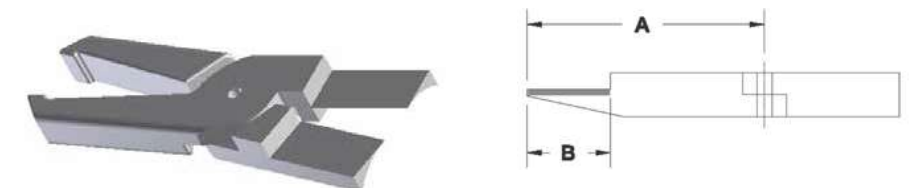


- Can be used on ME cutters.

F5EK	A (Pivot Location)	B (Edge Length)	C (Blade Opening)	Cutter Body Size	Weight (g)	Piab No.
	35	18	9,0	20	112	0214237

F9EK BLADE

Product Code: F9EK



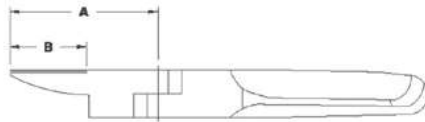
- Can be used on ME cutters.

F9EK	A (Pivot Location)	B (Edge Length)	C (Blade Opening)	Cutter Body Size	Weight (g)	Piab No.
	65	39	15,0	30	396	0214247

CATEGORY III - STANDARD TYPE, FG

FG10 BLADE

Product Code: FG10

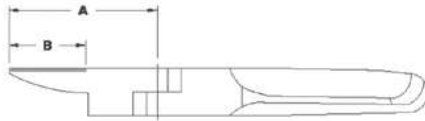


- Can be used on MG cutter.

FG10	A (Pivot Location)	B (Edge Length)	C (Blade Opening)	Cutter Body Size	Weight (g)	Piab No.
FG10	24	13	4	3	76	0214268

FG3 BLADE

Product Code: FG3



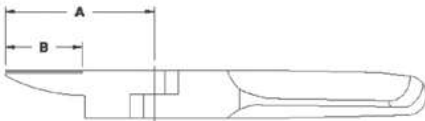
- Can be used on MG cutter.

FG3	A (Pivot Location)	B (Edge Length)	C (Blade Opening)	Cutter Body Size	Weight (g)	Piab No.
FG3	27	13	7	10	59	0214270

CATEGORY III - STANDARD TYPE, FE

FG5 BLADE

Product Code: FG5



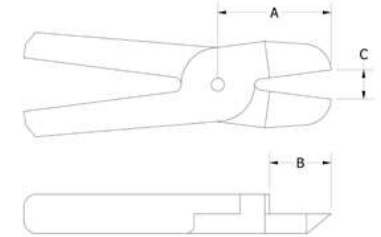
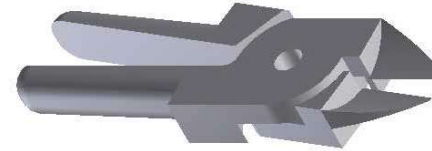
- Can be used on MG cutter.

FG5	A (Pivot Location)	B (Edge Length)	C (Blade Opening)	Cutter Body Size	Weight (g)	Piab No.
FG5	34	18	8	20	107	0214272

CATEGORY III - STANDARD TYPE, FGK

FG10K BLADE

Product Code: FG10K

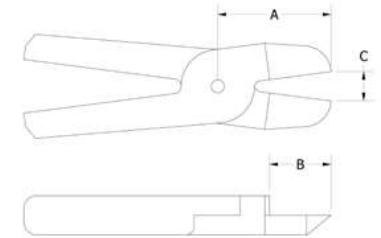
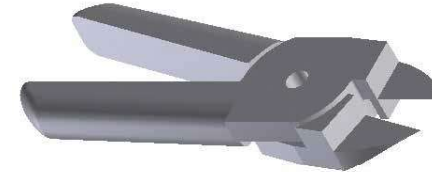


- Can be used on MG cutter.

FG10K	A (Pivot Location)	B (Edge Length)	C (Blade Opening)	Cutter Body Size	Piab No.
FG10K	24	13	4	3	0214269

FG3K BLADE

Product Code: FG3K

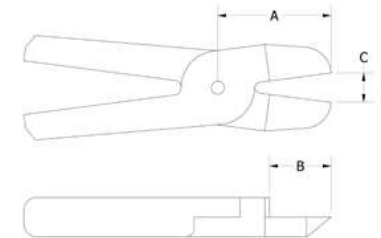
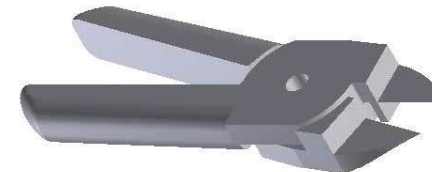


- Can be used on MG cutter.

FG3K	A (Pivot Location)	B (Edge Length)	C (Blade Opening)	Cutter Body Size	Piab No.
FG3K	27	13	7	10	0214271

FG5K BLADE

Product Code: FG5K



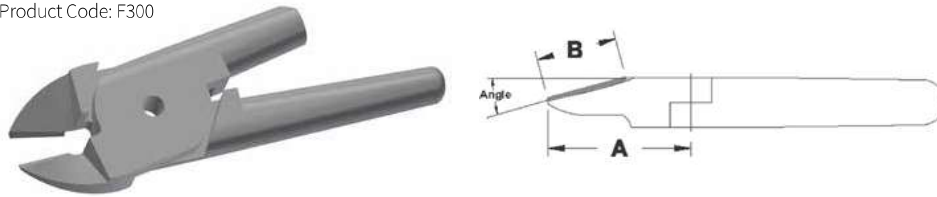
- Can be used on MG cutter.

FG5K	A (Pivot Location)	B (Edge Length)	C (Blade Opening)	Cutter Body Size	Piab No.
FG5K	34	18	8	20	0214273

CATEGORY IV - STANDARD TYPE, F

F300 BLADE

Product Code: F300

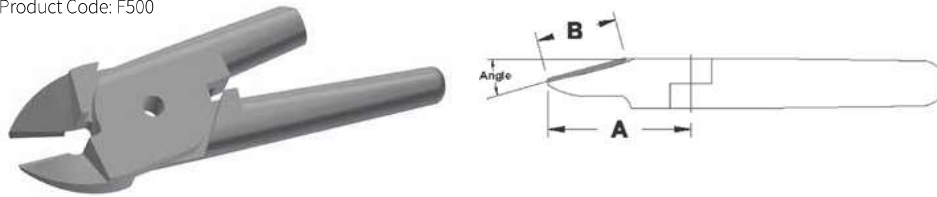


- Can be used on CP cutters.
- Only one side of the blade moves, making locating cut easier.

	A (Pivot Location)	B (Edge Length)	C (Blade Opening)	Blade Angle	Cutter Body Size	Weight (g)	Piab No.
F300	27	15	3	15°	10	55	0214231

F500 BLADE

Product Code: F500

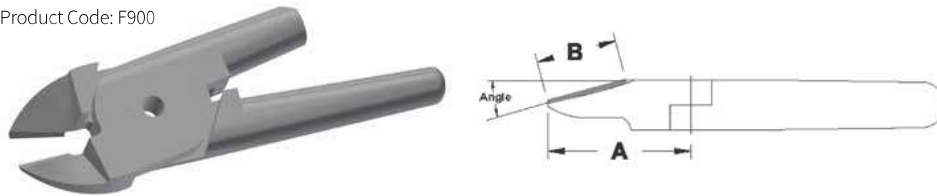


- Can be used on CP cutters.
- Only one side of the blade moves, making locating cut easier.

	A (Pivot Location)	B (Edge Length)	C (Blade Opening)	Blade Angle	Cutter Body Size	Weight (g)	Piab No.
F500	35	22	7	15°	20	113	0214234

F900 BLADE

Product Code: F900



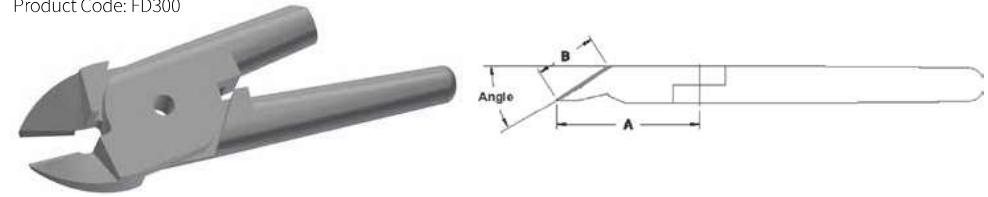
- Can be used on CP cutters.
- Only one side of the blade moves, making locating cut easier.

	A (Pivot Location)	B (Edge Length)	C (Blade Opening)	Blade Angle	Cutter Body Size	Weight (g)	Piab No.
F900	65	45	10	15°	30	370	0214245

CATEGORY IV - STANDARD TYPE, FD

FD300 BLADE

Product Code: FD300

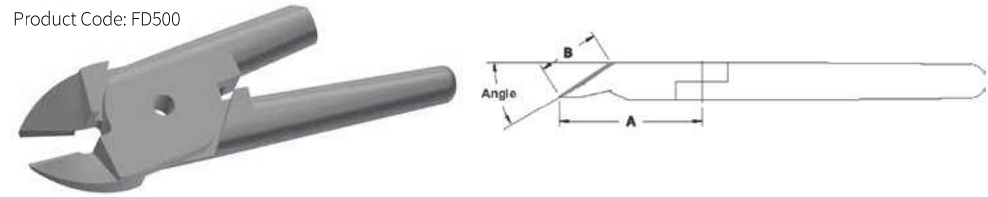


- Can be used on CP cutters.
- Only one side of the blade moves, making locating cut easier.

	A (Pivot Location)	B (Edge Length)	C (Blade Opening)	Blade Angle	Cutter Body Size	Piab No.
FD300	27	15	3	40°	10	0214258

FD500 BLADE

Product Code: FD500

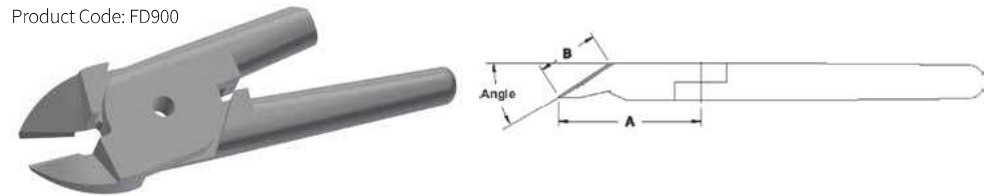


- Can be used on CP cutters.
- Only one side of the blade moves, making locating cut easier.

	A (Pivot Location)	B (Edge Length)	C (Blade Opening)	Blade Angle	Cutter Body Size	Piab No.
FD500	34	20	7	40°	20	0214259

FD900 BLADE

Product Code: FD900



- Can be used on CP cutters.
- Only one side of the blade moves, making locating cut easier.

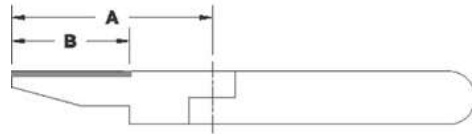
	A (Pivot Location)	B (Edge Length)	C (Blade Opening)	Blade Angle	Cutter Body Size	Piab No.
FD900	65	27	10	40°	30	0214261



CATEGORY V - STANDARD TYPE, FN

FN1 BLADE

Product Code: FN1

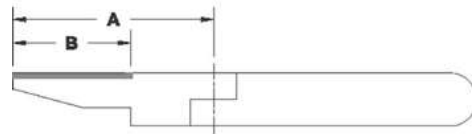


- Can be used on SN cutters.
- Pushes up close to part when cutter strokes in.
- Pulls cut material away from part as cutter returns.

	A (Pivot Location)	B (Edge Length)	C (Blade Opening)	Cutter Body Size	Piab No.
FN1	24	11	5.5	5	0213243

FN3 BLADE

Product Code: FN3



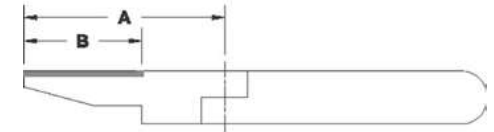
- Can be used on SN cutters.
- Pushes up close to part when cutter strokes in.
- Pulls cut material away from part as cutter returns.

	A (Pivot Location)	B (Edge Length)	C (Blade Opening)	Cutter Body Size	Piab No.
FN3	27	12	7.5	10	0213244



FN5 BLADE

Product Code: FN5

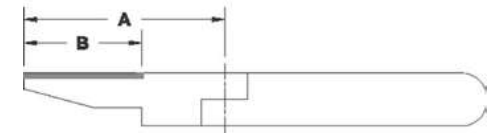


- Can be used on SN cutters.
- Pushes up close to part when cutter strokes in.
- Pulls cut material away from part as cutter returns.

	A (Pivot Location)	B (Edge Length)	C (Blade Opening)	Cutter Body Size	Piab No.
FN5	35	15	8.5	20	0213245

FN10 BLADE

Product Code: FN10



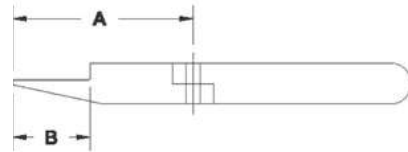
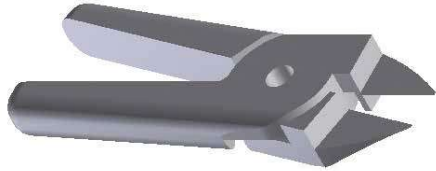
- Can be used on SN cutters.
- Pushes up close to part when cutter strokes in.
- Pulls cut material away from part as cutter returns.

	A (Pivot Location)	B (Edge Length)	C (Blade Opening)	Cutter Body Size	Piab No.
FN10	74	11	3.5	3	0213242

CATEGORY VI - STANDARD TYPE, FNP

FNP1 BLADE

Product Code: FNP1

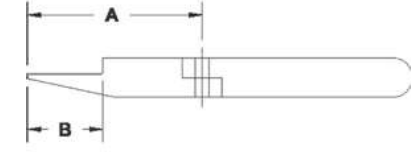


- Can be used on SNP cutters.
- Pulls up close to part when cutter strokes out.
- Pushes cut material away from part as cutter returns.

FNP1	A (Pivot Location)	B (Edge Length)	C (Blade Opening)	Cutter Body Size	Piab No.
	24	11	5.5	5	0213247

FNP5 BLADE

Product Code: FNP5

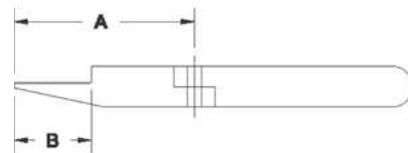


- Can be used on SNP cutters.
- Pulls up close to part when cutter strokes out.
- Pushes cut material away from part as cutter returns.

FNP5	A (Pivot Location)	B (Edge Length)	C (Blade Opening)	Cutter Body Size	Piab No.
	35	15	8.5	20	0213249

FNP3 BLADE

Product Code: FNP3

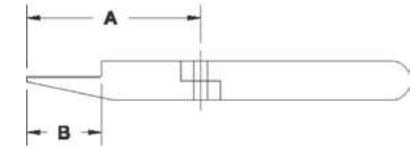
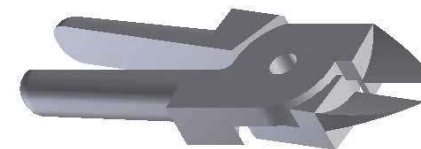


- Can be used on SNP cutters.
- Pulls up close to part when cutter strokes out.
- Pushes cut material away from part as cutter returns.

FNP3	A (Pivot Location)	B (Edge Length)	C (Blade Opening)	Cutter Body Size	Piab No.
	27	12	7.5	10	0213248

FNP10 BLADE

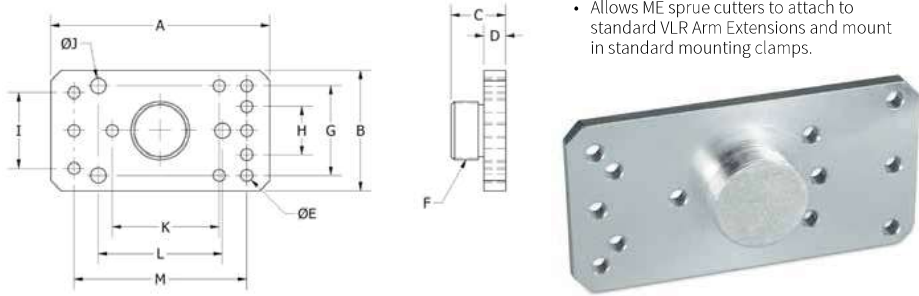
Product Code: FNP10



- Can be used on SNP cutters.
- Pulls up close to part when cutter strokes out.
- Pushes cut material away from part as cutter returns.

FNP10	A (Pivot Location)	B (Edge Length)	C (Blade Opening)	Cutter Body Size	Piab No.
	24	11	3.5	3	0213246

ADAPTER FOR ME CUTTERS



- Allows ME sprue cutters to attach to standard VLR Arm Extensions and mount in standard mounting clamps.

	A	B	C	D	E	F	G	H	I	J	K	L	M	Cutter	Extension	Piab No.
ME-HP 3/5/10	63	35	16	6	3.5	M17 X 1	26	14	22	4.5	31	34	50	ME 3/5/10 / ML 10/20	VLR 20-L	0213221
ME-HP 20/30	100	51	16	6	4.5	M27 X 1	34	26	40	4.5	34	40	85	ME 20/30 / ML 30	VLR 30-L	0213222

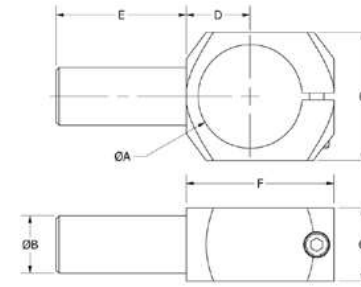
ARM EXTENSION



	A	B	C	Weight (g)	Piab No.
VLR 10-90	10	M8 x 1	90	9	0213182
VLR 14-120	14	M12 x 1	120	19	0213183
VLR 20-150	20	M17 x 1	150	46	0213184
VLR 30-200	30	M27 x 1	200	94	0213185

- Extends GRF and GRW gripper fingers.
- Attaches to ADZ and ADG cylinder adapters.
- Extends ZTB locators.
- Tightening hole for securing connection to mating parts.

STANDARD SPRUE CUTTER CLAMP



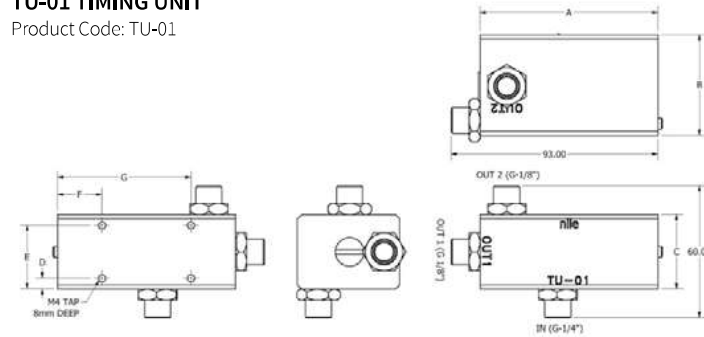
- Adjustable clamp for the cutter body.
- Mounts any 20 series gripper mounting arms and mounting clamps, including GLA's, WKA's, WSL's, and WST's.



	A	B	C	D	E	F	G	Sprue Cutter	Weight (g)	Piab No.
MR-KS 10	36	20	45	22	45	51	25	MR 10 A	92	0213214
MR-KS 20	45	20	51	35	45	70	25	MR 20 A	132	0213215
MR-KS 30	56	20	64	40	45	80	25	MR 30 A	168	0213216
MR-KS 50	75	20	89	50	50	100	25	MR 50 A	296	0213217

TU-01 TIMING UNIT

Product Code: TU-01



- Out 1 Port fires first and is intended to control the slide or tilt motion of the cutter body.
- Out 2 Port fires after a short delay and is intended to control the blade.
- Delay between port firing is adjustable to suit specific applications.
- Port Size G 1/8"



	A	B	C	D	E	F	G	Piab No.
TU-01	80	46	34	5	29	20	60	0214719