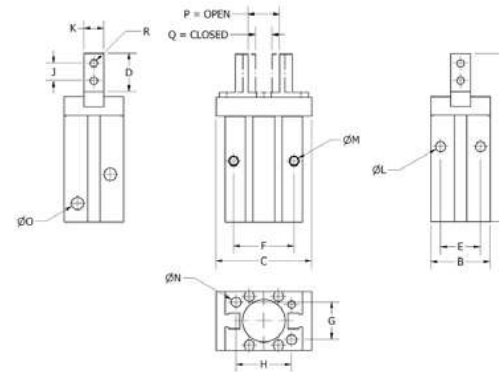




When vacuum gripping isn't an option, and you require a solution with more rigidity and greater precision, we pride ourselves in offering the highest quality, most dependable, and consistent mechanical gripping solutions.

- **Cost-efficient and reliable** product lines accommodate magnetic and finger systems
- Expansive product and engineering **knowledge**

PARALLEL GRIPPERS



- Double acting.
- Tapped holes in gripper arms allow for easy jaw attachment.
- Compatible with standard mounting clamps when combined with the appropriate ADG and a VLR Arm Extension.

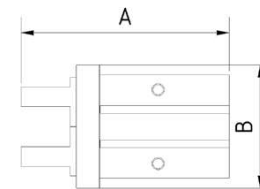
*Optional sensor: RRK-Y59B, RRK-Y59B-TP, RRK-Y7P or RRK-Y7P-TP.

Requirements

- Maximum air pressure 87 psi (6 bar).
- Requires filtered dry air.

	A	B	C	D	E	F	G	H	J	K	L	M	N	O (Air)	P	Q	R	Force (N)	Sensor (Optional)*	Weight (g)	Piab No.
PGR 10-S	57	16	29	12	11	16	12	18	6	5	M3	M3	M3	M3	9.7	5.7	M2.5	17	RRK-Y59B/ RRK-Y7P	55	0214561
PGR 16-S	67	24	38	15	16	24	15	22	7	8	M4	M4	M4	M5	12.6	6.6	M3	40	RRK-Y59B/ RRK-Y7P	120	0214562

PARALLEL GRIPPERS

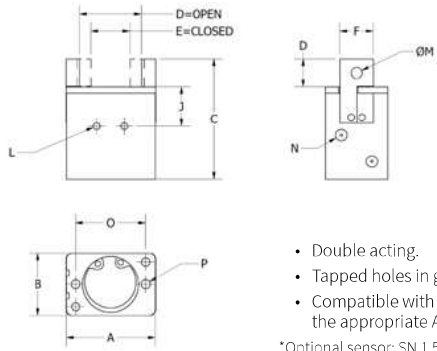


- Cylinder, including magnet, for the purpose of positioning.
- Further parallel grippers on demand.



	A	B	Depth	Stroke per Jaw	Piab No.
PG - MH22 - 10D	57	29	16.4	2	0216361
PG - MH22 - 16D	67.3	38	23.2	3	0216362
PG - MH22 - 20D	84.8	50	27.6	5	0216363
PG - MH22 - 25D	102.7	63	33.6	7	0216364

PGR PARALLEL GRIPPER



- Double acting.
- Tapped holes in gripper arms allow for easy jaw attachment.
- Compatible with standard mounting clamps when combined with the appropriate ADG and a VLR Arm Extension.

*Optional sensor: SN 1.5, SP 1.5, SN 1.5-P, or SP 1.5-P (*needs sensor kit to mount)

	A	B	C	D	E	F	G	H	J	L	M	N	O	P	Force (N)	Sensor Kit	Piab No.
PGR 25	25	18	34	17	11	10	4	10	15	M3	M4	M3	20	M3	35	PGR 25 SK	0214563
PGR 32	32	22	43	22	14	12	5	10	19	M3	M5	M5	25	M4	61	PGR 32 SK	0214565
PGR 40	40	26	51	28	16	16	6	10	24	M3	M5	M5	32	M4	110	PGR 40 SK	0214567

PGR 25 SENSOR MOUNTING KIT

Product Code: PGR 25 SK
Piab No. 0214564

- Sensor jaw for PGR 25.
- Includes: Sensor bracket, set screws, and mounting screws.

*Optional sensor: SN 1.5, SP 1.5, SN 1.5-P, SP 1.5-p.

PGR 32 SENSOR MOUNTING KIT

Product Code: PGR 32 SK
Piab No. 0214566

- Sensor jaw for PGR 32.
- Includes: Sensor bracket, set screws, and mounting screws.

*Optional sensor: SN 1.5, SP 1.5, SN 1.5-P, SP 1.5-p.

PGR 40 SENSOR MOUNTING KIT

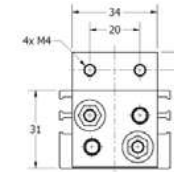
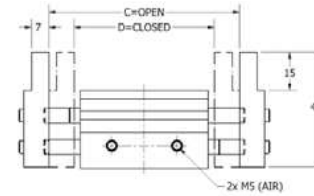
Product Code: PGR 40 SK
Piab No. 0214568

- Sensor jaw for PGR 40.
- Includes: Sensor bracket, set screws, and mounting screws.

*Optional sensor: SN 1.5, SP 1.5, SN 1.5-P, SP 1.5-p.



LARGE PARALLEL GRIPPERS

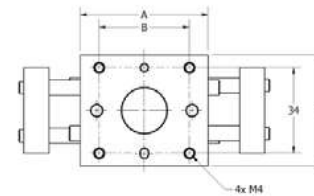


- Double acting.
- Tapped holes in gripper arms allow for easy jaw attachment.
- Compatible with standard mounting clamps when combined with the appropriate ADG and a VLR Arm Extension.

*Optional sensor: RRK-Y59B, RRK-Y59B-TP, RRK-Y7P or RRK-Y7P-TP.

Requirements

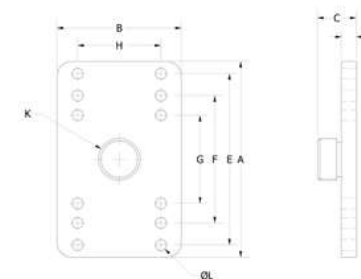
- Maximum air pressure 87 psi (6 bar).
- Requires filtered dry air.



	A	B	C	D	Force (N)	Sensor (Optional)*	Weight (g)	Piab No.
LPG 10-10	51	36	76	56	22	RRK-Y59B/RRK-Y7P	298	0214520
LPG 10-25	67	52	118	78	22	RRK-Y59B/RRK-Y7P	377	0214521
LPG 10-30	85	70	156	96	22	RRK-Y59B/RRK-Y7P	425	0214522



ADAPTERS FOR PARALLEL GRIPPER

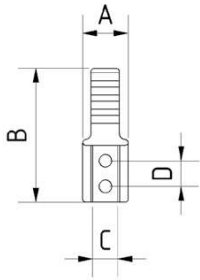


- Allows PGR and LPG grippers to attach to standard VLR Arm Extensions and mount in standard mounting clamps.



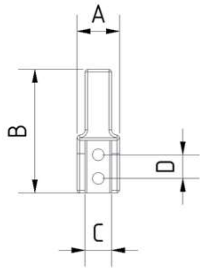
	A	B	C	D	E	F	G	H	K	L	Cylinder	Ext.	Weight (g)	Piab No.
ADG 10-S	30	19	16	6	18	-	-	12	M8 x 1	3.5	PGR 10-S	VLR 10...	7	0214157
ADG 14-S	32	25	16	6	22	-	-	15	M12 x 1	4.5	PGR 16-S	VLR 14...	14	0214160
ADG 14-25	25	16	16	6	20	-	-	-	M12 x 1	3.5	PGR 25	VLR 14...	9	0214158
ADG 14-32	38	19	16	6	25	-	-	-	M12 x 1	4.5	PGR 32	VLR 14...	12	0214159
ADG 20-S	80	51	16	6	70	52	36	34	M17 x 1	4.5	LP-G 10-...	VLR 20...	70	0214162
ADG 20-40	45	19	16	6	32	-	-	-	M17 x 1	4.5	PGR 40	VLR 20...	17	0214161

PLASTIC JAWS



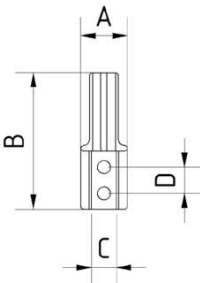
- Plastic jaws made of polyamide 12.
- Rubberized layer. Applied crosswise.

	A	B	C	D	Piab No.
KB - MHZ2 - 10 - GQ	8	27	5	5.5	0213415
KB - MHZ2 - 20 - GQ	16	47	10	9	0213417
KB - MHZ2 - 25 - GQ	20	55	12	12	0213419
KB - MHZ2 - 10 - GL	20	55	12	12	0216333
KB - MHZ2 - 20 - GL	20	55	12	12	0216334
KB - MHZ2 - 25 - GL	20	55	12	12	0216335



- Plastic jaws made of polyamide 12.
- Flocked layer.

	A	B	C	D	Piab No.
KB - MHZ2 - 10 - Flock	8	27	5	5.5	0213414
KB - MHZ2 - 20 - Flock	16	47	10	9	0213416



- Plastic jaws made of polyamide 12.
- Rubberized layer.

	A	B	C	D	Piab No.
KB - MHZ2 - 10 - GL	8	27	5	5.5	0216333
KB - MHZ2 - 20 - GL	16	47	10	9	0216334
KB - MHZ2 - 25 - GL	20	55	12	12	0216335



GRZ 10-6

This body size is able to apply 10 N force at midpoint of the jaw.

Requirements

- Maximum air pressure 87 psi (6 bar).
- Requires filtered dry air.

GRZ 10-6	A	C	D	E	F	H	I	J	K	O	P	Force (N)	Piab No.
	10	15	30	12	15	11	6	M4	M5	3	8	10	0214364

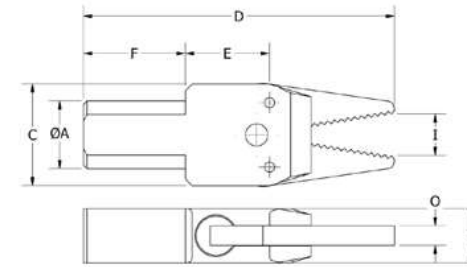
Jaw Types Available:



Standard-Type
The Standard-Type jaws come with a knurled pattern on the jaw-face to better grip the sprue / part.

GRZ 10-6 PART/SPRUE GRIPPER

Product Code: GRZ 10-6



- The Standard-Type jaws come with a knurled pattern on the jaw-face to better grip the sprue/part.
- Single action spring return function.
- Fully compatible with Piab's modular EOAT/gripper system.
- Requires 10mm Mounting Clamp.

GRZ 10-8

This body size is able to apply 19 N force at midpoint of the jaw.

Requirements

- Maximum air pressure 87 psi (6 bar).
- Requires filtered dry air.

	A	C	D	E	F	H	I	J	K	O	P	Force (N)	Sensor (Optional)	Piab No.
GRZ 10-8	10	20	40	16	15	14	8	M6	M5	4	10	19	-	0214365
GRZ 10-8 C	10	20	40	16	15	14	8	M6	M5	4	10	19	Built-in Sensor	0214366

Jaw Types Available:

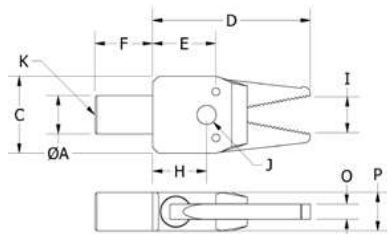


Standard-Type
The Standard-Type jaws come with a knurled pattern on the jaw-face to better grip the sprue / part.

C-Type
The C-Type jaws have sensors added to them to detect when the jaws are in the closed state with a sprue / part clamped within them.

GRZ 10-8 PART/SPRUE GRIPPER

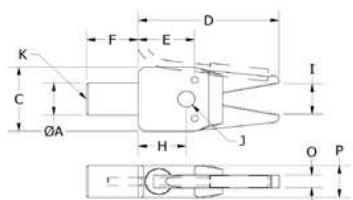
Product Code: GRZ 10-8



- Knurled pattern on the jaw-face with magnetic sensor to detect when jaw is closed.
- Single action spring return function.
- Fully compatible with Piab's modular EOAT/gripper system.
- Requires 10mm Mounting Clamp.

GRZ 10-8 C PART/SPRUE GRIPPER

Product Code: GRZ 10-8 C



- Knurled pattern on the jaw-face with magnetic sensor to detect when jaw is closed.
- Single action spring return function
- Fully compatible with Piab's modular EOAT/gripper system
- In-jaw part sensor does not require adjustment.
- Requires 10mm Mounting Clamp.

GRZ 10-10

This body size is able to apply 20 N force at midpoint of the jaw.

Requirements

- Maximum air pressure 87 psi (6 bar).
- Requires filtered dry air.

Jaw Types Available:



Standard-Type
The Standard-Type jaws come with a knurled pattern on the jaw-face to better grip the sprue / part.

A-Type
The A-Type jaws have 2 holes for mounting custom jaws to the body.

A1-Type
The A1-Type jaws have 3 holes for mounting custom jaws to the body.

C-Type
The C-Type jaws have sensors added to them to detect when the jaws are in the closed state with a sprue/part clamped within them.

KT-Type
The KT-Type jaws have an equatorial diameter to pick parts that are round.



NP-Type
The NP-Type jaws add nitrile rubber pad to the jaws to prevent marring of finished parts.



NPC-Type
The NPC-Type has long jaws with the full surface of saw teeth.



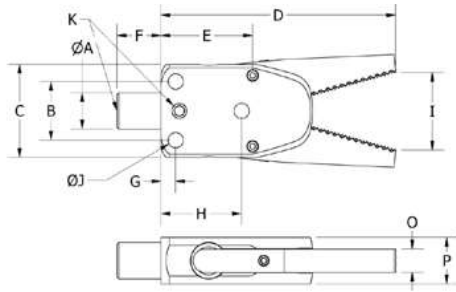
ST-Type
The ST-Type jaw adds aggressive teeth to clamp into the sprue.



STC-Type
The STC-Type jaw adds aggressive teeth to clamp into the sprue.

GRZ 10-10 PART/SPRUE GRIPPER

Product Code: GRZ 10-10

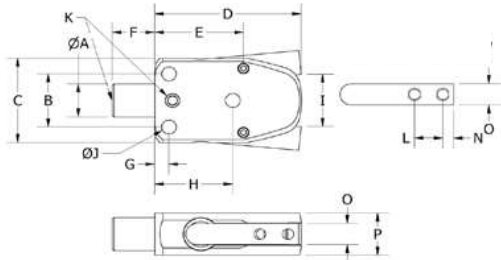


- The Standard-Type jaws come with a knurled pattern on the jaw-face to better grip the sprue/part.
- Single action spring return function.
- Fully compatible with Piab's modular EOAT/gripper system.
- Anodized finish.

GRZ 10-10	A	B	C	D	E	F	G	H	I	J	K	O	P	Force (N)	Piab No.
	10	16	25	64	25	12	4	22	21	4.2	M5	6	13	20	0213190

GRZ 10-10 A PART/SPRUE GRIPPER

Product Code: GRZ 10-10 A

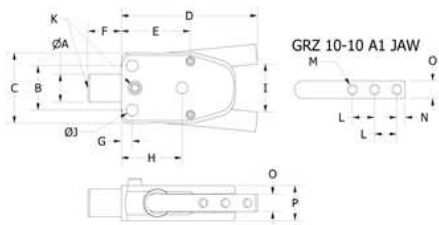


- 2 Holes in the jaws to allow mounting custom jaws.
- Single action spring return function.
- Fully compatible with Piab's modular EOAT/gripper system.
- Anodized Finish.
- Requires 10mm Mounting Clamp, or mounting holes.

GRZ 10-10 A	A	B	C	D	E	F	G	H	I	J	K	L	M	N	O	P	Piab No.
	10	16	25	41	25	12	4	22	17	4.2	M5	8	M4	3	6	13	0214354

GRZ 10-10 A1 PART/SPRUE GRIPPER

Product Code: GRZ 10-10 A1

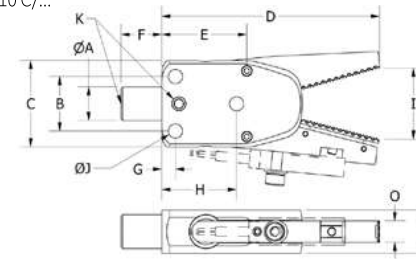


- 3 Holes in the jaws to allow mounting custom jaws.
- Single action spring return function.
- Fully compatible with Piab's modular EOAT/gripper system.
- Anodized Finish.
- Requires 10mm Mounting Clamp, or mounting holes.

GRZ 10-10 A1	A	B	C	D	E	F	G	H	I	J	K	L	M	N	O	P	Piab No.
	10	16	25	48	25	12	4	22	19	4.2	M5	8	M4	3	6	13	0214356

GRZ 10-10 C/... PART/SPRUE GRIPPER

Product Code: GRZ 10-10 C/...

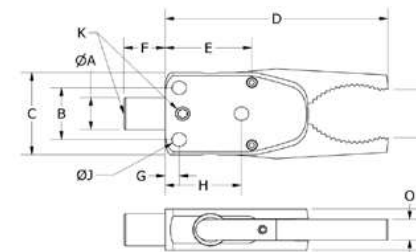


- The C-Type jaws have sensors added to them to detect when the jaws are in the closed state with a sprue/part clamped within them.
- Single action spring return function.
- Fully compatible with Piab's modular EOAT/gripper system.
- Anodized Finish.
- External sensor does not require adjustment.
- Requires 10mm Mounting Clamp, or mounting holes.

GRZ 10-10 C-N	A	B	C	D	E	F	G	H	I	J	K	O	P	Force (N)	Sensor (Inc.)	Piab No.
	10	16	25	64	25	12	4	22	21	4.2	M5	6	13	20		0213358
GRZ 10-10 C-N8	10	16	25	64	25	12	4	22	21	4.2	M5	6	13	20	SN 1.5-P	0213396
GRZ 10-10 C-P	10	16	25	64	25	12	4	22	21	4.2	M5	6	13	20	SP 1.5	0213344
GRZ 10-10 C-P8	10	16	25	64	25	12	4	22	21	4.2	M5	6	13	20	SP 1.5-P	0213353

GRZ 10-10 KT PART/SPRUE GRIPPER

Product Code: GRZ 10-10 KT

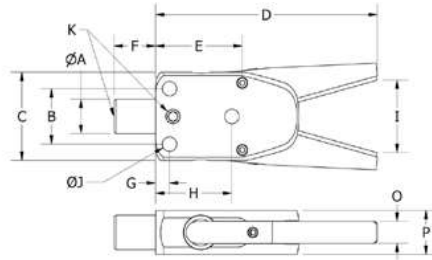


- The KT-Type jaws have an equatorial diameter to pick parts that are round.
- The T-Type jaws adds diagonal teeth to the jaw-face to prevent slipping of the material being grabbed.
- Single action spring return function.
- Fully compatible with Piab's modular EOAT/gripper system.
- Anodized Finish.
- Requires 10mm Mounting Clamp, or mounting holes.

GRZ 10-10 KT	A	B	C	D	E	F	G	H	I	J	K	O	P	Force (N)	Piab No.
	10	16	25	64	25	12	4	22	14	4.2	M5	6	13	20	0214380

GRZ 10-10 NP PART/SPRUE GRIPPER WITH PADDED JAW

Product Code: GRZ 10-10 NP

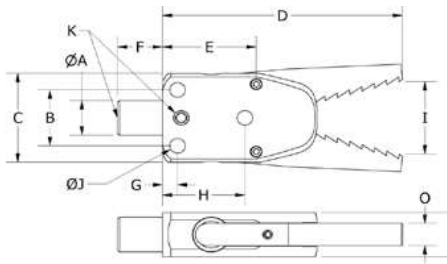


- The NP-Type jaws add nitrile rubber pad to the jaws to prevent marring of finished parts.
- Single action spring return function.
- Fully compatible with Piab's modular EOAT/gripper system.
- Anodized finish.

	A	B	C	D	E	F	G	H	I	J	K	O	P	Force (N)	Piab No.
GRZ 10-10 NP	10	16	25	64	25	12	4	22	21	4.2	M5	6	13	20	0213190

GRZ 10-10 ST PART/SPRUE GRIPPER

Product Code: GRZ 10-10 ST

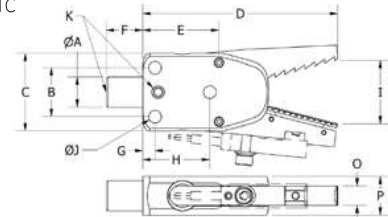


- Aggressive teeth to clamp into the sprue.
- Single action spring return function.
- Fully compatible with Piab's modular EOAT/gripper system.
- Anodized finish.

	A	B	C	D	E	F	G	H	I	J	K	O	P	Force (N)	Piab No.
GRZ 10-10 ST	10	16	25	64	25	12	4	22	21	4.2	M7	6	13	20	0213196

GRZ 10-10 STC PART/SPRUE GRIPPER

Product Code: GRZ 10-10 STC



- Used for aggressive teeth to clamp into the sprue.
- Single action spring return function.
- Fully compatible with Piab's modular EOAT/gripper system.
- Anodized Finish.
- External sensor does not require adjustment.

	A	B	C	D	E	F	G	H	I	J	K	O	P	Force (N)	Sensor (Inc.)	Piab No.
GRZ 10-10 STC-N	10	16	25	64	25	12	4	22	21	4.2	M8	6	13	20	SN 1.5	0213478
GRZ 10-10 STC-N8	10	16	25	64	25	12	4	22	21	4.2	M8	6	13	20	SN 1.5-P	0213741
GRZ 10-10 STC-P	10	16	25	64	25	12	4	22	21	4.2	M8	6	13	20	SP 1.5	0213468
GRZ 10-10 STC-P8	10	16	25	64	25	12	4	22	21	4.2	M8	6	13	20	SP 1.5-P	0213469

GRZ 10-12

This body size is able to apply 34 N force at midpoint of the jaw.

Requirements

- Maximum air pressure 87 psi (6 bar).
- Requires filtered dry air.

Jaw Types Available:



Standard-Type
The Standard-Type jaws come with a knurled pattern on the jaw-face to better grip the sprue/part.



A-Type
The A-Type jaws have 2 holes for mounting custom jaws to the body.



C-Type
The C-Type jaws have sensors added to them to detect when the jaws are in the closed state with a sprue/part clamped within them.



NP-Type
The NP-Type jaws add nitrile rubber pad to the jaws to prevent marring of finished parts.



NPC-Type
The NPC-Type has long jaws with the full surface of saw teeth.



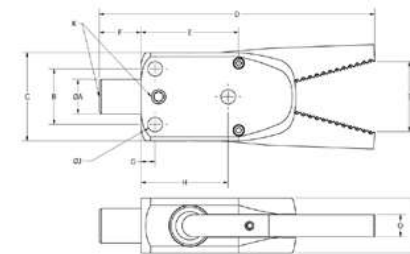
ST-Type
The ST-Type jaw adds aggressive teeth to clamp into the sprue.



STC-Type
The STC-Type jaw adds aggressive teeth to clamp into the sprue.

GRZ 10-12 PART/SPRUE GRIPPER

Product Code: GRZ 10-12

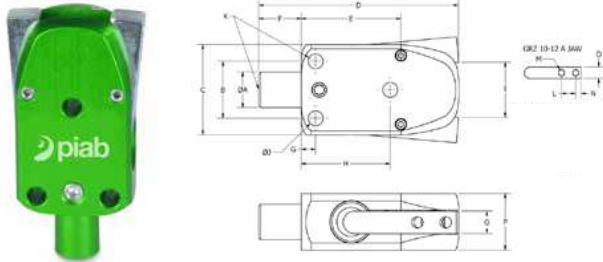


- The Standard-Type jaws come with a knurled pattern on the jaw-face to better grip the sprue/part.
- Single action spring return function.
- Fully compatible with Piab's modular EOAT/gripper system.
- Anodized finish.

	A	B	C	D	E	F	G	H	I	J	K	O	P	Force (N)	Piab No.
GRZ 10-12	10	16	25	67	28	12	4	25	21	4.2	M5	6	16	34	0213191

GRZ 10-12 A PART/SPRUE GRIPPER

Product Code: GRZ 10-12 A

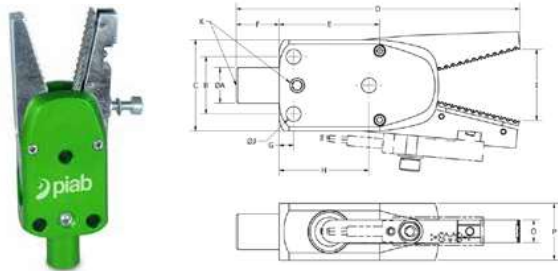


- 2 Holes in the jaws to allow mounting custom jaws .
- Single action spring return function.
- Fully compatible with Piab's modular EOAT/gripper system.
- Anodized finish.

	A	B	C	D	E	F	G	H	I	J	K	L	M	N	O	P	Piab No.
GRZ 10-12 A	10	16	25	44	28	12	4	25	17	4.2	M5	8	M4	3	6	16	0214363

GRZ 10-12 C/... PART/SPRUE GRIPPER

Product Code: GRZ 10-12 C/...

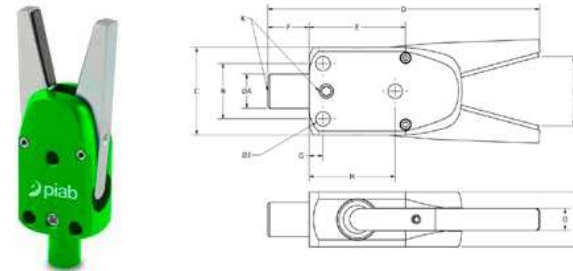


- The C-Type jaws have sensors added to them to detect when the jaws are in the closed state with a sprue/part clamped within them.
- Single action spring return function.
- Fully compatible with Piab's modular EOAT/gripper system.
- Anodized Finish.
- External sensor does not require adjustment.

	A	B	C	D	E	F	G	H	I	J	K	O	P	Force (N)	Sensor (Inc.)	Piab No.
GRZ 10-12 C-N	10	16	25	67	28	12	4	25	21	4.2	M5	6	16	34	SN 1.5	0213399
GRZ 10-12 C-N8	10	16	25	67	28	12	4	25	21	4.2	M5	6	16	34	SN 1.5-P	0213418
GRZ 10-12 C-P	10	16	25	67	28	12	4	25	21	4.2	M5	6	16	34	SP 1.5	0213397
GRZ 10-12 C-P8	10	16	25	67	28	12	4	25	21	4.2	M5	6	16	34	SP 1.5-P	0213398

GRZ 10-12 NP PART/SPRUE GRIPPER WITH PADDED JAW

Product Code: GRZ 10-12 NP

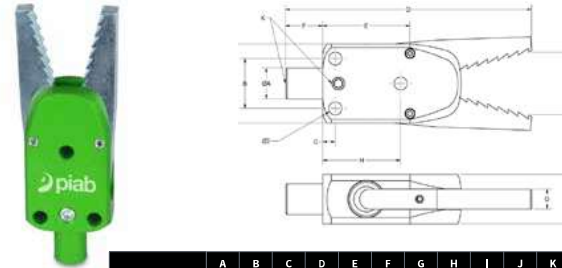


- The NP-Type jaws add nitrile rubber pad to the jaws to prevent marring of finished parts.
- Single action spring return function.
- Fully compatible with Piab's modular EOAT/gripper system.
- Anodized finish.

	A	B	C	D	E	F	G	H	I	J	K	O	P	Force (N)	Piab No.
GRZ 10-12 NP	10	16	25	79.3	28	12	4	25	20	4.2	M5	6	16	34	0213203

GRZ 10-12 ST PART/SPRUE GRIPPER

Product Code: GRZ 10-12 ST

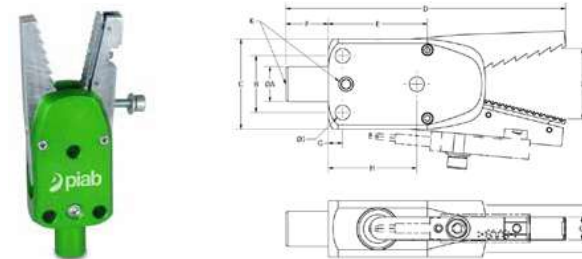


- The ST-Type jaw adds aggressive teeth to clamp into the sprue.
- Single action spring return function.
- Fully compatible with Piab's modular EOAT/gripper system.
- Anodized finish.

	A	B	C	D	E	F	G	H	I	J	K	O	P	Force (N)	Piab No.
GRZ 10-12 ST	10	16	25	67	28	12	4	25	21	4.2	M5	6	16	34	0213197

GRZ 10-12 STC/... PART/SPRUE GRIPPER

Product Code: GRZ 10-12 STC/...



- Aggressive teeth to clamp into the sprue.
- Single action spring return function.
- Fully compatible with Piab's modular EOAT/gripper system.
- Anodized Finish.
- External sensor does not require adjustment.

	A	B	C	D	E	F	G	H	I	J	K	O	P	Force (N)	Sensor (Inc.)	Piab No.
GRZ 10-12 STC-N	10	16	25	67	28	12	4	25	21	4.2	M5	6	16	34	SN 1.5	0213744
GRZ 10-12 STC-N8	10	16	25	67	28	12	4	25	21	4.2	M5	6	16	34	SN 1.5-P	0213745
GRZ 10-12 STC-P	10	16	25	67	28	12	4	25	21	4.2	M5	6	16	34	SP 1.5	0213742
GRZ 10-12 STC-P8	10	16	25	67	28	12	4	25	21	4.2	M5	6	16	34	SP 1.5-P	0213743

GRZ 20-16 SERIES

This body size with standard length jaws is able to apply 65 N of force at midpoint of the jaw. The L-Type jaw is able to apply 42 N of force at the midpoint of the jaw.

Requirements

- Maximum air pressure 87 psi (6 bar).
- Requires filtered dry air.
- 20mm Mounting Clamp.

Jaw Types Available:

Standard-Type
The Standard-Type jaws come with a knurled pattern on the jaw-face to better grip the sprue/part.

A-Type
The A-Type jaws have 2 holes for mounting custom jaws to the body.

C-Type
The C-Type jaws have sensors added to them to detect when the jaws are in the closed state with a sprue/part clamped within them.

KT-Type
The KT-Type jaws have an equatorial diameter to pick parts that are round.

L-Type
The L-Type jaws increase the length to allow for a greater variation in location of the sprue/part.

NP-Type
The NP-Type jaws add nitrile rubber pad to the jaws to prevent marring of finished parts.

NPC-Type
The NPC-Type has long jaws with the full surface of saw teeth.

R-Type
The R-Type jaw removes the contaminants from the jaw face.

ST-Type
The ST-Type jaw adds aggressive teeth to clamp into the sprue.

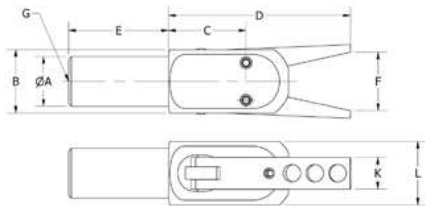
T-Type
The T-Type jaws add diagonal teeth to the jaw-face to prevent slipping of the material being grabbed.

VP-Type
The VP-Type jaws add nitrile rubber pads to the jaws to prevent marring of finished parts.

VPC-Type
The VPC-Type has long jaws with the full surface of saw teeth.

GRZ 20-16 PART/SPRUE PLIER

Product Code: GRZ 20-16

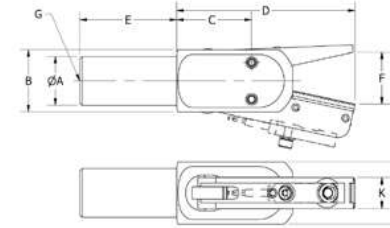


	A	B	C	D	E	F	G	K	L	Force (N)	Weight (g)	Piab No.
GRZ 20-16	20	25	32	73	24	23	G 1/8	13	25	65	141	0213192

- Bullet nose design for jaw spring protection.
- Single action spring return function.
- Fully compatible with Piab's modular EOAT/gripper system.
- Anodized finish.
- Requires 20mm Mounting Clamp.

GRZ 20-16 C/... SPRUE/PARTS PLIER

Product Code: GRZ 20-16 C/...

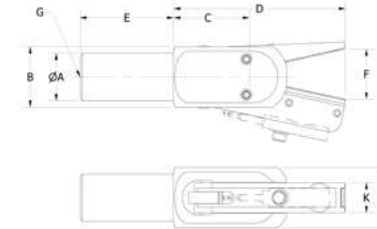


	A	B	C	D	E	F	G	K	L	Force (N)	Sensor (Inc.)	Weight (g)	Piab No.
GRZ 20-16 C-N	20	25	32	73	23	21	G 1/8	13	25	65	SN 1.5	63	0213463
GRZ 20-16 C-N8	20	25	32	73	23	21	G 1/8	13	25	65	SN 1.5-P	63	0213465
GRZ 20-16 C-P	20	25	32	73	23	21	G 1/8	13	25	65	SP 1.5	63	0213437
GRZ 20-16 C-P8	20	25	32	73	23	21	G 1/8	13	25	65	SP 1.5-P	63	0213462

- The C-Type jaws have sensors added to them to detect when the jaws are in the closed state with a sprue/part clamped within them.
- Bullet nose design for jaw spring protection.
- Single action spring return function.
- Fully compatible with Piab's modular EOAT/gripper system.
- Anodized finish.
- External sensor does not require adjustment.

GRZ 20-16 CT SPRUE/PARTS PLIER

Product Code: GRZ 20-16 CT

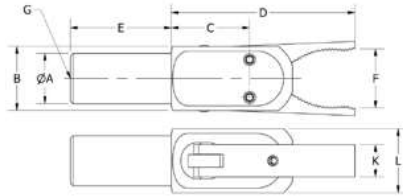


	A	B	C	D	E	F	G	K	L	Force (N)	Weight (g)	Piab No.
GRZ 20-16 CT-N	20	25	32	73	23	21	G 1/8	13	25	65	166	0215374
GRZ 20-16 CT-N8	20	25	32	73	23	21	G 1/8	13	25	65	166	0215383
GRZ 20-16 CT-P	20	25	32	73	23	21	G 1/8	13	25	65	166	0215957
GRZ 20-16 CT-P8	20	25	32	73	23	21	G 1/8	13	25	65	166	0215958

- The C-Type jaws have sensors added to them to detect when the jaws are in the closed state with a sprue/part clamped within them.
- The T-Type jaws add diagonal teeth to the jaw-face to prevent slipping of the material being grabbed.
- Bullet nose design for jaw spring protection.
- Single action spring return function.
- Fully compatible with Piab's modular EOAT/gripper system.
- Anodized finish.
- External sensor does not require adjustment.

GRZ 20-16 KT SPRUE/PART PLIERS

Product Code: GRZ 20-16 KT

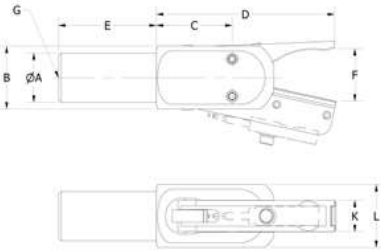


- The KT-Type jaws have an equatorial diameter to pick parts that are round.
- The T-Type jaws adds diagonal teeth to the jaw-face to prevent slipping of the material being grabbed.
- Bullet nose design for jaw spring protection.
- Single action spring return function.
- Fully compatible with Piab's modular EOAT/gripper system.
- Anodized finish.

	A	B	C	D	E	F	G	K	L	Force (N)	Weight (g)	Piab No.
GRZ 20-16 KT	20	25	32	73	23	23	G 1/8	13	25	65	149	0214372

GRZ 20-16 KTC/... SPRUE/PARTS PLIER

Product Code: GRZ 20-16 KTC/...

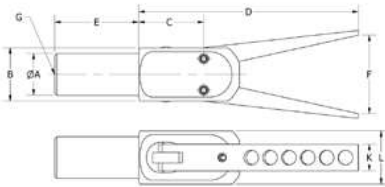


- The C-Type jaws have sensors added to them to detect when the jaws are in the closed state with a sprue/part clamped within them.
- The KT-Type jaws have an equatorial diameter to pick parts that are round.
- The T-Type jaws adds diagonal teeth to the jaw-face to prevent slipping of the material being grabbed.
- Bullet nose design for jaw spring protection.
- Single action spring return function.
- Fully compatible with Piab's modular EOAT/gripper system.
- Anodized finish.

	A	B	C	D	E	F	G	K	L	Force (N)	Sensor (Inc.)	Weight (g)	Piab No.
GRZ 20-16 KTC-N	20	25	32	73	23	21	G 1/8	13	25	65	SN 1.5	165	0215959
GRZ 20-16 KTC-N8	20	25	32	73	23	21	G 1/8	13	25	65	SN 1.5-P	165	0215960
GRZ 20-16 KTC-P	20	25	32	73	23	21	G 1/8	13	25	65	SP 1.5	165	0215961
GRZ 20-16 KTC-P8	20	25	32	73	23	21	G 1/8	13	25	65	SP 1.5-P	165	0215962

GRZ 20-16 L LONG SPRUE/PARTS PLIER

Product Code: GRZ 20-16 L

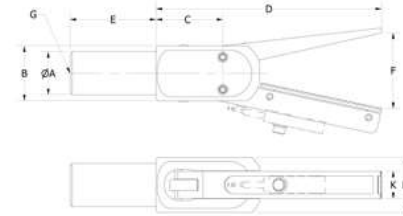


- The L-Type jaws increase the length to allow for a greater variation in location of the sprue/part.
- Bullet nose design for jaw spring protection.
- Single action spring return function.
- Fully compatible with Piab's modular EOAT/gripper system.
- Anodized finish.

	A	B	C	D	E	F	G	K	L	Force (N)	Weight (g)	Piab No.
GRZ 20-16 L	20	25	32	105	39	37	G 1/8	13	25	42	162	0214375

GRZ 20-16 LC/... LONG SPRUE/PARTS PLIER

Product Code: GRZ 20-16 LC/...

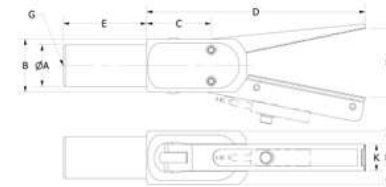


- The L-Type jaws increase the length to allow for a greater variation in location of the sprue/part.
- The C-Type jaws have sensors added to them to detect when the jaws are in the closed state with a sprue/part clamped within them.
- Bullet nose design for jaw spring protection.
- Single action spring return function.
- Fully compatible with Piab's modular EOAT/gripper system.
- Anodized finish.
- External sensor does not require adjustment.

	A	B	C	D	E	F	G	K	L	Force (N)	Sensor (Inc.)	Weight (g)	Piab No.
GRZ 20-16 LC-N	20	25	32	105	37	32	G 1/8	13	25	42	SN 1.5	128	0215963
GRZ 20-16 LC-N8	20	25	32	105	37	32	G 1/8	13	25	42	SN 1.5-P	128	0215964
GRZ 20-16 LC-P	20	25	32	105	37	32	G 1/8	13	25	42	SP 1.5	128	0215965
GRZ 20-16 LC-P8	20	25	32	105	37	32	G 1/8	13	25	42	SP 1.5-P	128	0215966

GRZ 20-16 LCT/... LONG SPRUE/PARTS PLIER

Product Code: GRZ 20-16 LCT/...

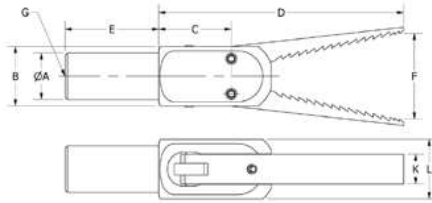


- The C-Type jaws have sensors added to them to detect when the jaws are in the closed state with a sprue/part clamped within them.
- The L-Type jaws increase the length to allow for a greater variation in location of the sprue/part.
- The T-Type jaws adds diagonal teeth to the jaw-face to prevent slipping of the material being grabbed.
- Bullet nose design for jaw spring protection.
- Single action spring return function.
- Fully compatible with Piab's modular EOAT/gripper system.
- Anodized finish.
- External sensor does not require adjustment.

	A	B	C	D	E	F	G	K	L	Force (N)	Sensor (Inc.)	Weight (g)	Piab No.
GRZ 20-16 LCT-P	20	25	32	105	37	32	G 1/8	13	25	42	SP 1.5	157	0213771
GRZ 20-16 LCT-P8	20	25	32	105	37	32	G 1/8	13	25	42	SP 1.5-P	157	0213772
GRZ 20-16 LCT-N	20	25	32	105	37	32	G 1/8	13	25	42	SN 1.5	157	0213773
GRZ 20-16 LCT-N8	20	25	32	105	37	32	G 1/8	13	25	42	SN 1.5-P	157	0213774

GRZ 20-16 LST LONG SAW TOOTH SPRUE/PART PLIER

Product Code: GRZ 20-16 LST

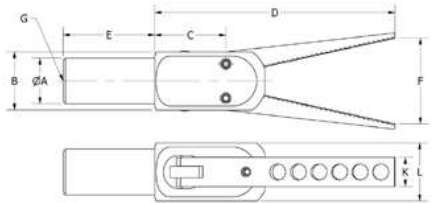


- The L-Type jaws increase the length to allow for a greater variation in location of the sprue/part.
- The ST-Type jaw adds aggressive teeth to clamp into the sprue.
- Bullet nose design for jaw spring protection.
- Single action spring return function.
- Fully compatible with Piab's modular EOAT/gripper system.
- Anodized finish.

GRZ 20-16 LST	A	B	C	D	E	F	G	K	L	Force (N)	Weight (g)	Piab No.
GRZ 20-16 LST	20	25	32	105	39	36	G 1/8	13	25	42	154	0214379

GRZ 20-16 LT LONG SPRUE/PARTS PLIER

Product Code: GRZ 20-16 LT

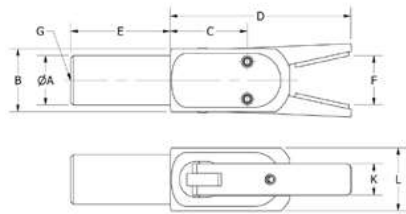


- The L-Type jaws increase the length to allow for a greater variation in location of the sprue/part.
- The T-Type jaws adds diagonal teeth to the jaw-face to prevent slipping of the material being grabbed.
- Bullet nose design for jaw spring protection.
- Single action spring return function.
- Fully compatible with Piab's modular EOAT/gripper system.
- Anodized finish.

GRZ 20-16 LT	A	B	C	D	E	F	G	K	L	Force (N)	Weight (g)	Piab No.
GRZ 20-16 LT	20	25	32	105	39	37	G 1/8	13	25	42	219	0213209

GRZ 20-16 NP PART/SPRUE GRIPPER

Product Code: GRZ 20-16 NP

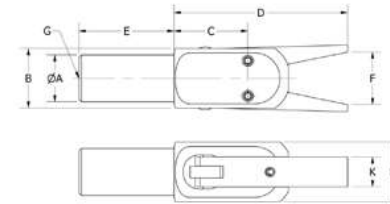


- Bullet nose design for jaw spring protection.
- Fully compatible with Piab's modular EOAT/gripper system.
- Anodized finish.
- The jaw is lined with non-marking neoprene rubber.
- The temperature range is -30° - 220° F (-34° - 104° C).
- The tensile strength of the neoprene is 1200 psi.

GRZ 20-16 NP	A	B	C	D	E	F	G	K	L	Force (N)	Weight (g)	Piab No.
GRZ 20-16 NP	20	25	32	73	40	21	G 1/8	13	25	65	150	0213204

GRZ 20-16 R SPRUE/PARTS PLIER

Product Code: GRZ 20-16 R

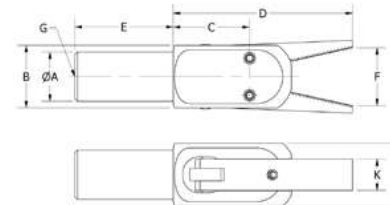


- Flat and smooth with no gripping pattern to avoid marking of a part being gripped.
- Bullet nose design for jaw spring protection.
- Single action spring return function.
- Fully compatible with Piab's modular EOAT/gripper system.
- Anodized finish.

GRZ 20-16 R	A	B	C	D	E	F	G	K	L	Force (N)	Weight (g)	Piab No.
GRZ 20-16 R	20	25	32	73	25	23	G 1/8	13	25	65	169	0214383

GRZ 20-16 RT SPRUE/PARTS PLIER

Product Code: GRZ 20-16 RT

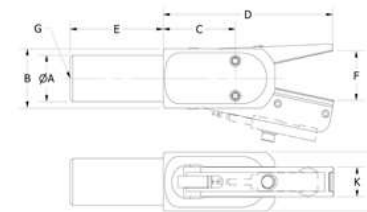


- Flat with teeth, allowing for a larger gripping surface area. This prevents hot plastic from getting caught inside the countersink holes of the T-type jaws.
- Bullet nose design for jaw spring protection.
- Single action spring return function.
- Fully compatible with Piab's modular EOAT/gripper system.
- Anodized finish.

GRZ 20-16 RT	A	B	C	D	E	F	G	K	L	Force (N)	Weight (g)	Piab No.
GRZ 20-16 RT	20	25	32	73	25	23	G 1/8	13	25	65	362	0214385

GRZ 20-16 RTC/... SPRUE/PART PLIER

Product Code: GRZ 20-16 RTC/...

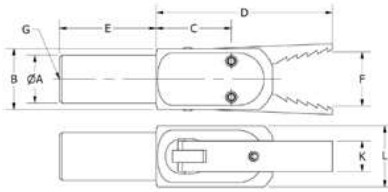


- The RT-Type jaw is flat with teeth, allowing for a larger gripping surface area. This prevents hot plastic from getting caught inside the countersink holes of the T-type.
- Bullet nose design for jaw spring protection.
- Single action spring return function.
- Fully compatible with Piab's modular EOAT/gripper system.
- Anodized finish.
- External sensor does not require adjustment.

	A	B	C	D	E	F	G	K	L	Force (N)	Sensor (Inc.)	Weight (g)	Piab No.
GRZ 20-16 RTC-N	20	25	32	73	25	21	G 1/8	13	25	65	SN 1.5	177	0215967
GRZ 20-16 RTC-N8	20	25	32	73	25	21	G 1/8	13	25	65	SN 1.5-P	177	0215968
GRZ 20-16 RTC-P	20	25	32	73	25	21	G 1/8	13	25	65	SP 1.5	177	0215969
GRZ 20-16 RTC-P8	20	25	32	73	25	21	G 1/8	13	25	65	SP 1.5-P	177	0215970

GRZ 20-16 ST SPRUE/PARTS PLIER

Product Code: GRZ 20-16 ST

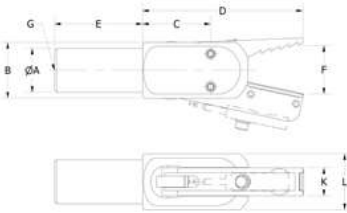


- The ST-Type jaw adds aggressive teeth to clamp into the sprue.
- Bullet nose design for jaw spring protection.
- Single action spring return function.
- Fully compatible with Piab's modular EOAT/gripper system.
- Anodized finish.

	A	B	C	D	E	F	G	K	L	Force (N)	Weight (g)	Piab No.
GRZ 20-16 ST	20	25	32	73	23	23	G1/8	13	25	65	46	0213198

GRZ 20-16 STC/... SPRUE /PART PLIER

Product Code: GRZ 20-16 STC/...

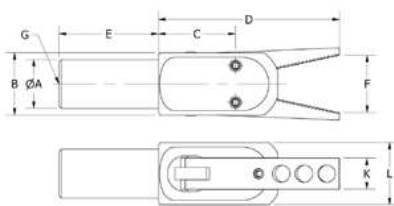


- The ST-Type jaw adds aggressive teeth to clamp into the sprue.
- Bullet nose design for jaw spring protection.
- Single action spring return function.
- Fully compatible with Piab's modular EOAT/gripper system.
- Anodized finish.
- External sensor does not require adjustment.

	A	B	C	D	E	F	G	K	L	Force (N)	Sensor (Inc.)	Weight (g)	Piab No.
GRZ 20-16 STC-N	20	25	32	73	23	21	G1/8	13	25	65	SN 1.5	170	0213748
GRZ 20-16 STC-N8	20	25	32	73	23	21	G1/8	13	25	65	SN 1.5-P	170	0213749
GRZ 20-16 STC-P	20	25	32	73	23	21	G1/8	13	25	65	SP 1.5	170	0213746
GRZ 20-16 STC-P8	20	25	32	73	23	21	G1/8	13	25	65	SP 1.5-P	170	0213747

GRZ 20-16 T SPRUE/PARTS PLIER WITH TEETH

Product Code: GRZ 20-16 T

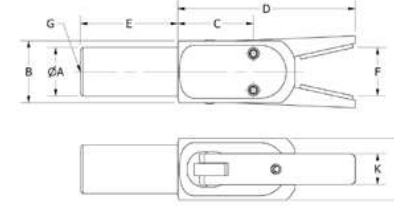


- The T-Type jaws adds diagonal teeth to the jaw-face to prevent slipping of the material being grabbed.
- Bullet nose design for jaw spring protection.
- Single action spring return function.
- Fully compatible with Piab's modular EOAT/gripper system.
- Anodized finish.

	A	B	C	D	E	F	G	K	L	Force (N)	Weight (g)	Piab No.
GRZ 20-16 T	20	25	32	73	25	23	G1/8	13	25	65	143	0214389

GRZ 20-16 VP PART/SPRUE GRIPPER WITH PADDED JAW

Product Code: GRZ 20-16 VP

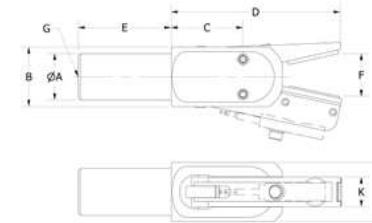


- Jaws add Viton rubber pad to the jaws to prevent marring of finished parts.
- Bullet nose design for jaw spring protection.
- Fully compatible with Piab's modular EOAT/gripper system.
- Anodized finish.
- The jaw is lined with ultra-strength corrosion resistant Viton Rubber.
- The temperature range is 0° - 400° F (-17° - 204° C).
- The tensile strength of the Viton is 1500 psi.

	A	B	C	D	E	F	G	K	L	Force (N)	Weight (g)	Piab No.
GRZ 20-16 VP	20	25	32	73	40	21	G1/8	13	25	65	150	0214391

GRZ 20-16 VPC/... PART/SPRUE GRIPPER WITH PADDED JAW

Product Code: GRZ 20-16 VPC/...



- Jaws add Viton rubber pad to the jaws to prevent marring of finished parts.
- Bullet nose design for jaw spring protection.
- Fully compatible with Piab's modular EOAT/gripper system.
- Anodized finish.
- The jaw is lined with ultra-strength corrosion resistant Viton Rubber.
- The temperature range is 0° - 400° F (-17° - 204° C).
- The tensile strength of the Viton is 1500 psi.
- External sensor does not require adjustment.

	A	B	C	D	E	F	G	K	L	Force (N)	Sensor (Inc.)	Weight (g)	Piab No.
GRZ 20-16 VP-N	20	25	32	73	40	21	G1/8	13	25	65	SN 1.5	150	0215971
GRZ 20-16 VP-N8	20	25	32	73	40	21	G1/8	13	25	65	SN 1.5-P	150	0215972
GRZ 20-16 VP-P	20	25	32	73	40	21	G1/8	13	25	65	SP 1.5	150	0215973
GRZ 20-16 VP-P8	20	25	32	73	40	21	G1/8	13	25	65	SP 1.5-P	150	0215974

GRZ 20-22 SERIES

This body size is able to apply 110 N of force at midpoint of the jaw.

Requirements

- Maximum air pressure 87 psi (6 bar).
- Requires filtered dry air.

Jaw Types Available:



Standard-Type

The Standard-Type jaws come with a knurled pattern on the jaw-face to better grip the sprue / part.

C-Type

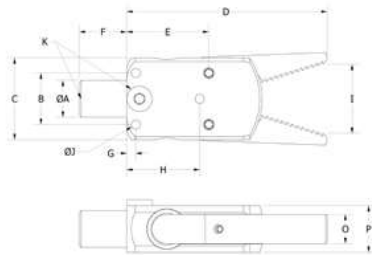
The C-Type jaws have sensors added to them to detect when the jaws are in the closed state with a sprue / part clamped within them.

KT-Type

The KT-Type jaws have an equatorial diameter to pick parts that are round.

GRZ 20-22 PART/SPRUE GRIPPER WITH TEETH

Product Code: GRZ 20-22

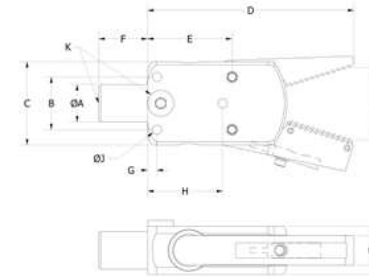


- Standard jaw-face with teeth.
- Single action spring return function.
- Fully compatible with Piab's modular EOAT/gripper system.
- Anodized finish.

	A	B	C	D	E	F	G	H	I	J	K	O	P	Force (N)	Weight (g)	Piab No.
GRZ 20-22	20	28	45	110	45	26	5	40	37	5	G 1/8	16	25	110	365	0214394

GRZ 20-22 C/... PART/SPRUE GRIPPER

Product Code: GRZ 20-22 C/...

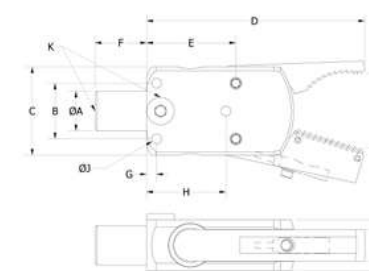


- The C-Type jaws have sensors added to them to detect when the jaws are in the closed state with a sprue/part clamped within them.
- Single action spring return function.
- Fully compatible with Piab's modular EOAT/gripper system.
- Anodized finish.
- External sensor does not require adjustment.

	A	B	C	D	E	F	G	H	I	J	K	O	P	Force (N)	Sensor (Inc.)	Weight (g)	Piab No.
GRZ 20-22 C-N	20	28	45	110	45	26	5	40	37	5	G 1/8	16	25	110	SN 1.5	380	0215975
GRZ 20-22 C-N8	20	28	45	110	45	26	5	40	37	5	G 1/8	16	25	110	SN 1.5-P	380	0215976
GRZ 20-22 C-P	20	28	45	110	45	26	5	40	37	5	G 1/8	16	25	110	SP 1.5	380	0215977
GRZ 20-22 C-P8	20	28	45	110	45	26	5	40	37	5	G 1/8	16	25	110	SP 1.5-P	380	0215978

GRZ 20-22 KTC/... PART/SPRUE GRIPPER

Product Code: GRZ 20-22 KTC/...



- The C-Type jaws have sensors added to them to detect when the jaws are in the closed state with a sprue/part clamped within them.
- The KT-Type jaws have an equatorial diameter to pick parts that are round.
- Single action spring return function.
- Fully compatible with Piab's modular EOAT/gripper system.
- Anodized finish.
- Compact yet strong grip force.
- External sensor does not require adjustment.

	A	B	C	D	E	F	G	H	I	J	K	O	P	Force (N)	Sensor (Inc.)	Weight (g)	Piab No.
GRZ 20-22 KTC-N	20	28	45	110	45	26	5	40	37	5	G 1/8	16	25	110	SN 1.5	168	0215979
GRZ 20-22 KTC-N8	20	28	45	110	45	26	5	40	37	5	G 1/8	16	25	110	SN 1.5-P	168	0215980
GRZ 20-22 KTC-P	20	28	45	110	45	26	5	40	37	5	G 1/8	16	25	110	SP 1.5	168	0215981
GRZ 20-22 KTC-P8	20	28	45	110	45	26	5	40	37	5	G 1/8	16	25	110	SP 1.5-P	168	0215982

GRZ 20-22 G SERIES

This body size with standard length jaws is able to apply 145 N of force at midpoint of the jaw. The L-Type jaw is able to apply 100 N of force at the midpoint of the jaw.

Requirements

- Maximum air pressure 87 psi (6 bar).
- Requires filtered dry air.

Jaw Types Available:



C-Type

The C-Type jaws have sensors added to them to detect when the jaws are in the closed state with a sprue / part clamped within them.



KT-Type

The KT-Type jaws have an equatorial diameter to pick parts that are round.



LST-Type

The LST-Type has long jaws with the full surface of saw teeth.



ST-Type

The ST-Type jaw adds aggressive teeth to clamp into the sprue.



STC-Type

The STC-Type saw tooth jaw adds aggressive teeth to clamp into the sprue including external sensor.

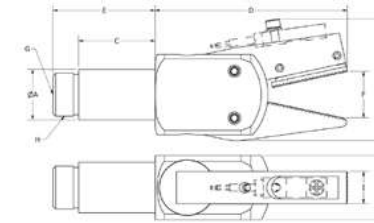
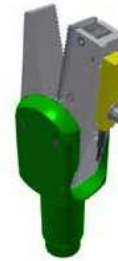


T-Type

The T-Type jaws adds diagonal teeth to the jaw-face to prevent slipping of the material being grabbed.

GRZ 20-22 G-CT/... PART/SPRUE GRIPPER

Product Code: GRZ 20-22 G-CT/...

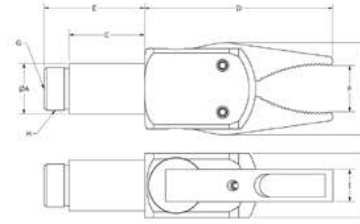


- The C-Type jaws have sensors added to them to detect when the jaws are in the closed state with a sprue / part clamped within them.
- The T-Type jaws adds diagonal teeth to the jaw-face to prevent slipping of the material being grabbed.
- Single action spring return function.
- Fully compatible with Piab's modular EOAT/gripper system.
- Anodized finish.
- Compact yet strong grip force.
- External sensor does not require adjustment.

	A	B	C	D	E	F	G	H	I	J	Force (N)	Sensor (Inc.)	Piab No.
GRZ 20-22 G-CT-N	20	48.5	30	75	40	20	G1/8	M17x1	13	25	145	SN 1.5	0215983
GRZ 20-22 G-CT-N8	20	48.5	30	75	40	20	G1/8	M17x1	13	25	145	SN 1.5-P	0215984
GRZ 20-22 G-CT-P	20	48.5	30	75	40	20	G1/8	M17x1	13	25	145	SP 1.5	0215985
GRZ 20-22 G-CT-P8	20	48.5	30	75	40	20	G1/8	M17x1	13	25	145	SP 1.5-P	0215986

GRZ 20-22 G-KT PART/SPRUE GRIPPER

Product Code: GRZ 20-22 G-KT

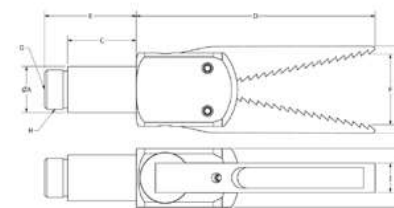


- The KT-Type jaws have an equatorial diameter to pick parts that are round.
- The T-Type jaws adds diagonal teeth to the jaw-face to prevent slipping of the material being grabbed.
- Single action spring return function.
- Fully compatible with Piab's modular EOAT/gripper system.
- Anodized finish.
- Compact yet strong grip force.

	A	B	C	D	E	F	G	H	I	J	Force (N)	Piab No.
GRZ 20-22 G-KT	20	36.5	30	75	40	21	G1/8	M17x1	13	25	145	0215371

GRZ 20-22 G-LST HIGH FORCE SPRUE/PARTS PLIER WITH LONG SAW TOOTH JAWS

Product Code: GRZ 20-22 G-LST

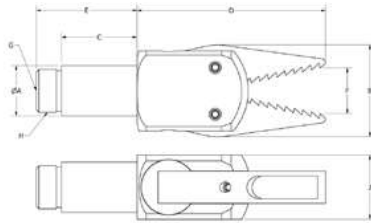


- The L-Type jaws increase the length to allow for a greater variation in location of the sprue/part.
- The ST-Type jaw adds aggressive teeth to clamp into the sprue.
- Single action spring return function.
- Fully compatible with Piab's modular EOAT/gripper system.
- Anodized finish.
- Compact yet strong grip force.

	A	B	C	D	E	F	G	H	I	J	Force (N)	Piab No.
GRZ 20-22 G-LST	20	42.5	30	104	40	35	G1/8	M17x1	13	25	100	0215372

GRZ 20-22 G-ST HIGH FORCE SPRUE/PARTS PLIER WITH SAW TOOTH JAWS

Product Code: GRZ 20-22 G-ST

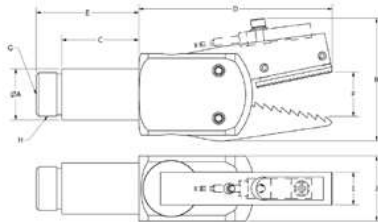


- The ST-Type jaw adds aggressive teeth to clamp into the sprue.
- Single action spring return function.
- Fully compatible with Piab's modular EOAT/gripper system.
- Anodized finish.
- Compact yet strong grip force.

	A	B	C	D	E	F	G	H	I	J	Force (N)	Piab No.
GRZ 20-22 G-ST	20	36.5	30	75	40	21	G1/8	M17x1	13	25	145	0215375

GRZ 20-22 G-STC/... HIGH FORCE SPRUE/PARTS PLIER WITH SAW TOOTH JAW AND SENSOR

Product Code: GRZ 20-22 G-STC/...

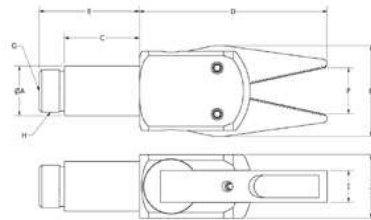


- The ST-Type jaw adds aggressive teeth to clamp into the sprue.
- Single action spring return function.
- Fully compatible with Piab's modular EOAT/gripper system.
- Anodized finish.
- Compact yet strong grip force.
- External sensor does not require adjustment.

	A	B	C	D	E	F	G	H	I	J	Force (N)	Sensor (Inc.)	Piab No.
GRZ 20-22 G-STC-N	20	52	30	75	40	21	G1/8	M17x1	13	25	145	SN 1.5	0215987
GRZ 20-22 G-STC-N8	20	52	30	75	40	21	G1/8	M17x1	13	25	145	SN 1.5-P	0215988
GRZ 20-22 G-STC-P	20	52	30	75	40	21	G1/8	M17x1	13	25	145	SP 1.5	0215989
GRZ 20-22 G-STC-P8	20	52	30	75	40	21	G1/8	M17x1	13	25	145	SP 1.5-P	0215990

GRZ 20-22 G-T HIGH FORCE SPRUE/PART PLIER WITH TEETH

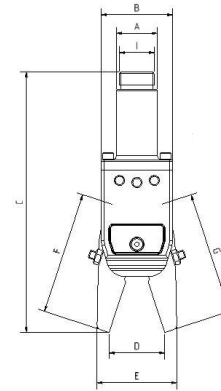
Product Code: GRZ 20-22 G-T



- The T-Type jaws adds diagonal knurl to the jaw-face to prevent slipping of the material being grabbed.
- Single action spring return function.
- Fully compatible with Piab's modular EOAT/gripper system.
- Anodized finish.
- Compact yet strong grip force.

	A	B	C	D	E	F	G	H	I	J	Force (N)	Piab No.
GRZ 20-22 G-T	20	36.5	30	75	40	21	G1/8	M17x1	13	25	145	0215377

GRIPPING PLIERS GZ20 WITHOUT SENSOR



Gripping pliers GZ12 without sensor

- Movement of the jaws by two pistons.
- No inside recuperating spring, therefore no loss of power.
- A wide range of jaws which can be combined as needed.
- Mounting diameter D = 10 mm or M10 x 1.
- 100 % compatible with common products.
- All components are anodized and offer excellent gliding properties as well as maximum wear protection.
- Easily change out jaw by loosening of the safety caps.
- Holding load of 95N at a working pressure of 6 bar.
- Pneumatic connection G1/8.

	A	B	C	D	E	F	G	Depth	I	Piab No.
GZ20 - AS50 - 10 - 10	20	35	127.5	26.5	39	60	60	25	M17x1	0213345
GZ20 - AS50 - 41 - 41	20	35	162	47	61.5	97	97	25	M17x1	0213346
GZ20 - AS50 - 50 - 50	20	35	127.5	26.5	39	60	60	25	M17x1	0213347
GZ20 - AS50 - 60 - 60	20	35	127.5	26.5	39	60	60	20	M17x1	0213348

GZ20 - AS50 - 10 - 10

Product Code:
GZ20 - AS50 - 10 - 10
• With Standard Jaws.

GZ20 - AS50 - 41 - 41

Product Code:
GZ20 - AS50 - 41 - 41
• With shaped jaws long plain/ clamping mode adjustable.

GZ20 - AS50 - 50 - 50

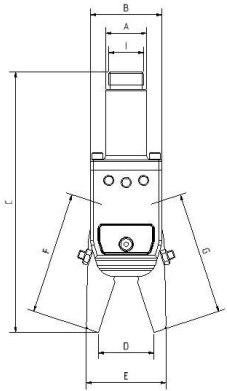
Product Code:
GZ20 - AS50 - 50 - 50
• With Saw Tooth Jaws.

GZ20 - AS50 - 60 - 60

Product Code:
GZ20 - AS50 - 60 - 60
• With Standards Jaws, rubberized.



GRIPPING PLIERS GZ20 WITHOUT SENSOR



Gripping pliers GZ12 without sensor

- Movement of the jaws by two pistons.
- No inside recuperating spring, therefore no loss of power.
- A wide range of jaws which can be combined as needed.
- Mounting diameter D = 10 mm or M10 x 1.
- 100 % compatible with common products.
- All components are anodized and offer excellent gliding properties as well as maximum wear protection.
- Easily change out jaw by loosening of the safety caps.
- Holding load of 95N at a working pressure of 6 bar.
- Pneumatic connection G1/8.

	A	B	C	D	E	F	G	Depth	I	Plab No.
GZ20 - AS50 - 00 - 00	20	35	127.5	26.5	39	60	60	25	M17x1	0216297
GZ20 - AS50 - 12 - 12	20	35	127.5	26.5	39	60	60	28.5	M17x1	0216300
GZ20 - AS50 - 40 - 40	20	35	127.5	26.5	39	60	60	25	M17x1	0216301
GZ20 - AS50 - 10 - 40	20	35	127.5	26.5	39	60	60	25	M17x1	0216298

GZ20 - AS50 - 00 - 00

- Product Code: GZ20 - AS50 - 00 - 00
- With Standard Jaws.



GZ20 - AS50 - 12 - 12

- Product Code: GZ20 - AS50 - 12 - 12
- With Standard Jaws, bride version.



GZ20 - AS50 - 40 - 40

- Product Code: GZ20 - AS50 - 40 - 40
- With Shaped Jaws.

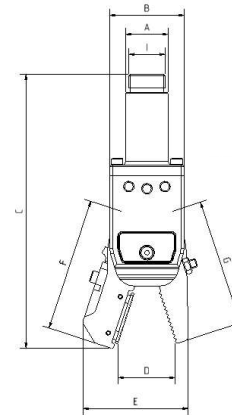


GZ20 - AS50 - 10 - 40

- Product Code: GZ20 - AS50 - 10 - 40



GRIPPING PLIERS GZ20 WITH SENSOR



Gripping pliers GZ20 with sensor

- Movement of the jaws by two pistons.
- No inside recuperating spring, therefore no loss of power.
- A wide range of jaws which can be combined as needed.
- Mounting diameter D = 20 mm or M17 x 1.
- 100 % compatible with common products.
- All components are anodized and offer excellent gliding properties as well as maximum wear protection.
- Sensor with 2m cable (version -90 / -91).
- Sensor with 0.3 m cable and M8 connector (version -95).
- Easily change out jaw by loosening of the safety caps.
- Sensor jaw with impact protection.
- Holding load of 95N at a working pressure of 6 bar.
- Pneumatic connection G1/8.

	A	B	C	D	E	F	G	Depth	I	Plab No.
GZ20 - AS50 - 10 - 95	20	35	130	26.5	50	63	60	25	M17x1	0213406
GZ20 - AS50 - 40 - 95	20	35	130	26.5	50	63	60	25	M17x1	0213350
GZ20 - AS50 - 50 - 95	20	35	130	26.5	50	63	60	25	M17x1	0213352

GZ20 - AS50 - 10 - 95

- Product Code: GZ20 - AS50 - 10 - 95
- With Sensor Jaw includes sensor with 0.3m cable and M8 connector.



GZ20 - AS50 - 40 - 95

- Product Code: GZ20 - AS50 - 40 - 95
- With Shaped and Sensor Jaw includes sensor with 0.3m cable and M8 connector.

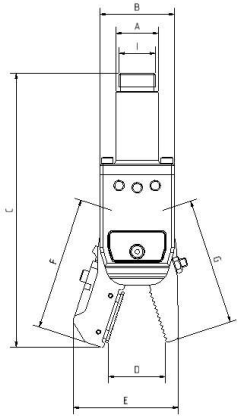


GZ20 - AS50 - 50 - 95

- Product Code: GZ20 - AS50 - 50 - 95
- With Saw Tooth- and Sensor Jaws includes sensor with 0.3m cable and M8 connector.



GRIPPING PLIERS GZ20 WITH SENSOR



Gripping pliers GZ20 with sensor

- Movement of the jaws by two pistons.
- No inside recuperating spring, therefore no loss of power.
- A wide range of jaws which can be combined as needed.
- Mounting diameter D = 20 mm or M17 x 1.
- 100 % compatible with common products.
- All components are anodized and offer excellent gliding properties as well as maximum wear protection.
- Sensor with 2m cable (version -90 / -91).
- Sensor with 0.3 m cable and M8 connector (version -95).
- Easily change out jaw by loosening of the safety caps.
- Sensor jaw with impact protection.
- Holding load of 95N at a working pressure of 6 bar.
- Pneumatic connection G1/8.

	A	B	C	D	E	F	G	Depth	I	Pliab No.
GZ20 - AS50 - 10 - 90	20	35	130	26.5	50	63	60	25	M17x1	0216299
GZ20 - AS50 - 40 - 90	20	35	130	26.5	50	63	60	25	M17x1	0216302
GZ20 - AS50 - 41 - 91	20	35	162	47	73	100	97	25	M17x1	0216303

GZ20 - AS50 - 10 - 90

- Product Code: GZ20 - AS50 - 10 - 90
- With Sensor Jaw includes sensor with 2m cable.

GZ20 - AS50 - 40 - 90

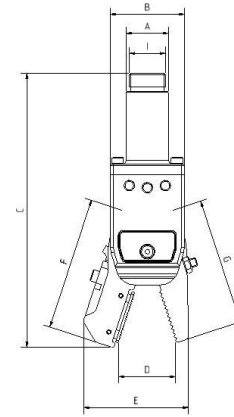
- Product Code: GZ20 - AS50 - 40 - 90
- With shaped and sensor jaw includes sensor with 2m cable (clamping mode adjustable).

GZ20 - AS50 - 41 - 91

- Product Code: GZ20 - AS50 - 41 - 91
- With shaped and sensor jaw long version includes sensor with 2m cable and M8 connector (huge open angle, clamping mode adjustable).



GRIPPING PLIERS GZ20 WITH SENSOR



Gripping pliers GZ20 with sensor

- Movement of the jaws by two pistons.
- No inside recuperating spring, therefore no loss of power.
- A wide range of jaws which can be combined as needed.
- Mounting diameter D = 20 mm or M17 x 1.
- 100 % compatible with common products.
- All components are anodized and offer excellent gliding properties as well as maximum wear protection.
- Sensor with 2m cable (version -90 / -91).
- Sensor with 0.3 m cable and M8 connector (version -95).
- Easily change out jaw by loosening of the safety caps.
- Sensor jaw with impact protection.
- Holding load of 95N at a working pressure of 6 bar.
- Pneumatic connection G1/8.

	A	B	C	D	E	F	G	Depth	I	Pliab No.
GZ20 - AS50 - 41 - 96	20	35	162	47	73	100	97	25	M17x1	0213351
GZ20 - AS50 - 50 - 90	20	35	130	26.5	50	63	60	25	M17x1	0216304
GZ20 - AS50 - 60 - 90	20	35	130	26.5	50	63	60	25	M17x1	0216306

GZ20 - AS50 - 41 - 96

- Product Code: GZ20 - AS50 - 41 - 96
- With shaped and sensor jaw long version includes sensor with 0.3m cable and M8 connector.

GZ20 - AS50 - 50 - 90

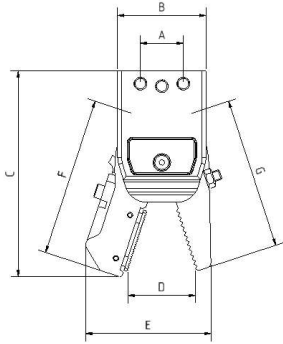
- Product Code: GZ20 - AS50 - 50 - 90
- With saw tooth and sensor jaws includes sensor with 2m cable.

GZ20 - AS50 - 60 - 90

- Product Code: GZ20 - AS50 - 60 - 90
- With saw tooth and sensor jaws includes sensor with 2m cable.



GRIPPING PLIERS COMPACT GZK20 WITH SENSOR



Gripping pliers compact GZK20 with sensor

- Movement of the jaws by two pistons.
- No inside recuperating spring, therefore no loss of power.
- A wide range of jaws which can be combined as needed.
- All components are anodized and offer excellent gliding properties as well as maximum wear protection.
- Sensor with 2m cable (version -90 / -91).
- Sensor with 0.3 m cable and M8 connector (version -95).
- Can be fixed directly.
- Easily change out jaw by loosening of the safety caps.
- Sensor jaw with impact protection.
- Holding load of 95N at a working pressure of 6 bar.
- Pneumatic connection G1/8 (frontally and laterally possible).

	A	B	C	D	E	F	G	Depth	I	Plab No.
GZK20 - 41 - 91	17.5	35	118	44.5	69	101.5	97	25	27.5	0213342
GZK20 - 50 - 90	17.5	35	78	25	48	60	60	25	27.5	0213343
GZK20 - 10 - 90	17.5	35	78	25	48	60	60	25	27.5	0213341

GZK20 - 41 - 91

- Product Code: GZK20 - 41 - 91
- With Shaped and Sensor Jaw long version includes sensor with 2m cable and M8 connector (huge opening angle, clamping mode adjustable).



GZK20 - 50 - 90

- Product Code: GZK20 - 50 - 90
- With Saw Tooth- and Sensor Jaws includes sensor with 2m cable.

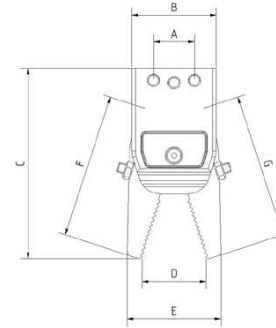


GZK20 - 10 - 90

- Product Code: GZK20 - 60 - 60
- With Standard Jaws, rubberized.



GRIPPING PLIERS COMPACT GZK20 WITHOUT SENSOR



Gripping pliers compact GZK20 without sensor

- Movement of the jaws by two pistons.
- No inside recuperating spring, therefore no loss of power.
- A wide range of jaws which can be combined as needed.
- All components are anodized and offer excellent gliding properties as well as maximum wear protection.
- Can be fixed directly.
- Easily change out jaw by loosening of the safety caps.
- Holding load of 95N at a working pressure of 6 bar.
- Pneumatic connection G1/8 (front and lateral are possible).

	A	B	C	D	E	F	G	Depth	I	Plab No.
GZK20 - 10 - 10	17.5	35	78	26	38	60	60	25	27.5	0213337
GZK20 - 41 - 41	17.5	35	113	46	59	97	97	25	27.5	0213338
GZK20 - 50 - 50	17.5	35	79	27	38	60	60	25	27.5	0213339
GZK20 - 60 - 60	17.5	35	78	26	38	60	60	25	27.5	0213340

GZK20 - 10 - 10

- Product Code: GZK20 - 10 - 10
- With Standard Jaws.



GZK20 - 41 - 41

- Product Code: GZK20 - 41 - 41
- With Shaped Jaws long plain/ clamping mode adjustable.



GZK20 - 50 - 50

- Product Code: GZK20 - 50 - 50
- With Saw Tooth Jaws

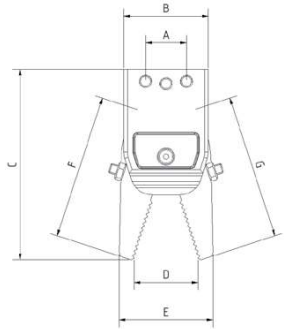


GZK20 - 60 - 60

- Product Code: GZK20 - 60 - 60
- With Standard Jaws, rubberized.



GRIPPING PLIERS COMPACT GZK20 WITHOUT SENSOR



Gripping pliers compact GZK2 without sensor

- Movement of the jaws by two pistons.
- No inside recuperating spring, therefore no loss of power.
- A wide range of jaws which can be combined among each other.
- All components are anodized and offer excellent gliding properties as well as the best possible wearing protection.
- Can be fixed directly.
- Easy jaw change by loosening of the safety caps.

	A	B	C	D	E	F	G	Depth	I	Piab No.
GZK20-00-00	17.5	35	78	26	38	60	60	25	27.5	0216323
GZK20-12-12	17.5	35	78	26	38	60	60	25	27.5	0216325
GZK20-40-40	17.5	35	79	27	38	60	60	25	27.5	0216326

GZK20-00-00

- Product Code: GZK20-00-00
- With Standard Jaws.



GZK20-12-12

- Product Code: GZK20-12-12
- With standard jaws, bride version.

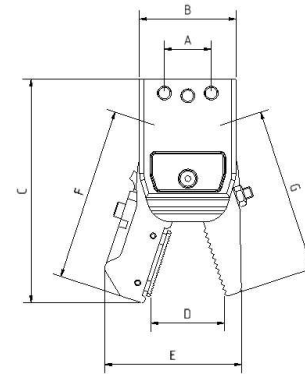


GZK20-40-40

- Product Code: GZK20-40-40
- With shaped jaws.



GRIPPING PLIERS COMPACT GZK20 WITH SENSOR



Gripping pliers compact GZK20 with sensor

- Movement of the jaws by two pistons.
- No inside recuperating spring, therefore no loss of power.
- A wide range of jaws which can be combined among each other.
- All components are anodized and offer excellent gliding properties as well as the best possible wearing protection.
- Sensor with 2m cable (version -90 / -91).
- Sensor with 0.3 m cable and M8 connector (version -95).
- Can be fixed directly.
- Easy jaw change by loosening of the safety caps.

	A	B	C	D	E	F	G	Depth	I	Piab No.
GZK20-10-95	17.5	35	78	24	48	60	60	25	27.5	0216324
GZK20-40-90	17.5	35	78	24	48	60	60	25	27.5	0216327
GZK20-40-95	17.5	35	78	24	48	60	60	25	27.5	0216328
GZK20-50-95	17.5	35	78	24	48	60	60	25	27.5	0216329

GZK20-10-95

- Product Code: GZK20-10-95
- With shaped jaws.



GZK20-40-90

- Product Code: GZK20-40-90
- With Shaped and Sensor Jaw includes sensor with 2m cable (clamping mode adjustable).



GZK20-40-95

- Product Code: GZK20-40-95
- With Shaped and Sensor Jaw includes sensor with 0.3m cable and M8 connector.

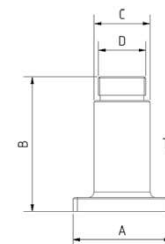


GZK20-50-95

- Product Code: GZK20-50-95
- With Saw Tooth and Sensor Jaw includes sensor with 0.3m cable and M8 connector.



GRIPPING PLIERS ADAPTERS

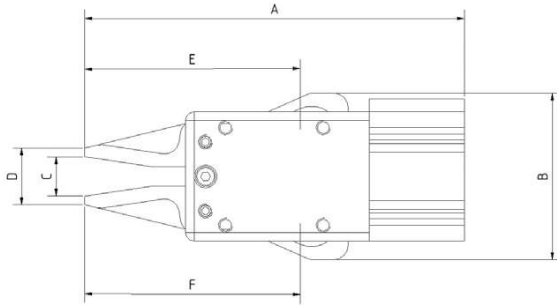


- For connecting the compact gripping pliers (GZK series).

	A	B	C	D	Piab No.
GZA20-14	35	40	M12x1	25	0213335
GZA20-20	35	48	M17x1	30	0213336



GRIPPING PLIERS COMPACT GZK32



Gripping pliers GZ32

- Activity: double-acting.
- Sensor with 2m cable (version -90).
- Sensor with 0,3m cable M8 connector (version -95).

	A	B	C	D	E	F	Depth	Plab No.
GZK32 - 10 - 10	132	58	13.5	20	75	75	45	0216330
GZK32 - 10 - 60	132	58	13.5	20	75	75	45	0216331

GZK32 - 10 - 10

Product Code: GZK32 - 10 - 10

Plab No. 0216330

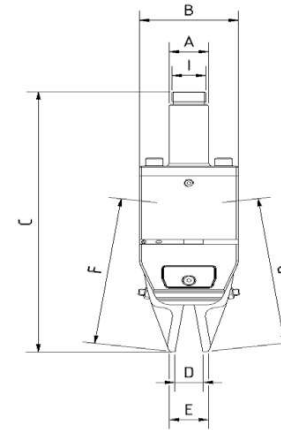
GZK32 - 10 - 60

Product Code: GZK32 - 10 - 60

Plab No. 0216331



GRIPPING PLIERS GZ25



Gripping pliers GZ25

- Movement of the jaws by two pistons.
- No inside recuperating spring, therefore no loss of power.
- A wide range of jaws which can be combined among each other.
- Position query of the jaws possible.
- Mounting diameter D = 20 mm or M17 x 1
- 100 % compatible with common products.
- All components are anodized and offer excellent gliding properties as well as the best possible wearing protection.
- Sensor with 2m cable (version -90 / -91).
- Sensor with 0.3 m cable and M8 connector (version -95).
- Easy jaw change by loosening of the safety caps.

	A	B	C	D	E	F	G	Depth	Plab No.
GZ25-AS55-00-00	20	50	171	14	20	96	96	30	0213404
GZ25-AS55-10-10	20	50	171	14	20	96	96	30	0113405
GZ25-AS55-10-95	20	50	171	14	41	96	96	30	0213406
GZ25-AS55-60-60	20	50	171	14	20	96	96	30	0213407
GZ25-AS55-00-90	20	50	171	14	41	96	96	30	0216307
GZ25-AS55-00-95	20	35	130	26.5	50	63	60	25	0216308
GZ25-AS55-10-90	20	50	171	14	41	96	96	30	0216309

GZ25-AS55-00-00

- Product Code:
GZ25-AS55-00-00
- With plain jaws



GZ25-AS55-10-10

- Product Code:
GZ25-AS55-10-10
- With Standard Jaws.



GZ25-AS55-10-95

- Product Code:
GZ25-AS55-10-95
- With Standard Jaws and Sensor Jaws.



GZ25-AS55-60-60

- Product Code:
GZ25-AS55-60-60
- With Standard Jaws and Rubberized Jaws.



GZ25-AS55-00-90

- Product Code:
GZ25-AS55-00-90
- With plain and Sensor Jaw includes sensor with 2m cable.



GZ25-AS55-00-95

- Product Code:
GZ25-AS55-00-95
- With plain and Sensor Jaw includes sensor with 0.3m cable and M8 connector

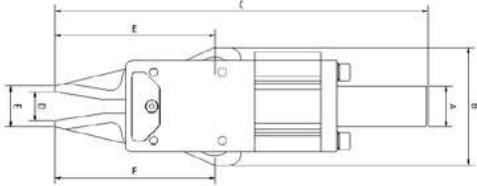


GZ25-AS55-10-90

- Product Code:
GZ25-AS55-10-90
- With Sensor Jaw includes sensor with 2m cable



GRIPPING PLIERS GZ32

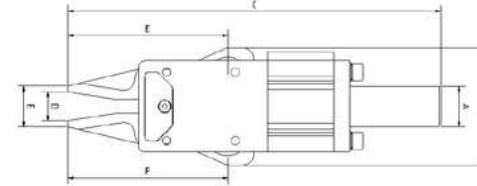


Gripping pliers GZ32

- Activity: double-acting.
- Sensor with 2m cable (version -90).
- Sensor with 0, 3m cable M8 connector (version -95).

	A	B	C	D	E	F	Depth	Piab No.
GZ32-AS50-10-10	20	58	185	13.5	20	75	75	0213355
GZ32-AS50-10-95	20	58	185	14	40	75	75	0213357
GZ32-AS50-60-60	20	58	185	13.5	20	75	75	0213356
GZ32-AS50-00-00	20	58	185	13.5	20	75	75	0216312
GZ32-AS50-00-90	20	58	185	14	40	75	75	0216693
GZ32-AS50-00-95	20	58	185	14	40	75	75	0216694

GRIPPING PLIERS GZ32



Gripping pliers GZ32

- Activity: double-acting.
- Sensor with 2m cable (version -90).
- Sensor with 0, 3m cable M8 connector (version -95).

	A	B	C	D	E	F	Depth	Piab No.
GZ32-AS50-10-40	20	58	185	13.5	20	75	75	0216313
GZ32-AS50-10-60	20	58	185	13.5	20	75	75	0216314
GZ32-AS50-10-90	20	58	185	14	40	75	75	0216315
GZ32-AS50-60-90	20	58	185	14	40	75	75	0216316
GZ32-AS50-60-95	20	58	185	14	40	75	75	0216317

GZ32-AS50-10-10

Product Code: GZ32-AS50-10-10
 • With Knurled Jaws.



GZ32-AS50-10-95

Product Code: GZ32-AS50-10-95
 • With Knurled Jaws and sensor.



GZ32-AS50-60-60

Product Code: GZ32-AS50-60-60
 • With Padded Jaws.



GZ32-AS50-10-40

Product Code: GZ32-AS50-10-40



GZ32-AS50-10-60

Product Code: GZ32-AS50-10-60



GZ32-AS50-10-90

Product Code: GZ32-AS50-10-90



GZ32-AS50-00-00

Product Code: GZ32-AS50-00-00



GZ32-AS50-00-90

Product Code: GZ32-AS50-00-90



GZ32-AS50-00-95

Product Code: GZ32-AS50-00-95



GZ32-AS50-60-90

Product Code: GZ32-AS50-60-90

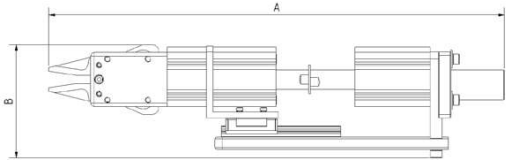


GZ32-AS50-60-95

Product Code: GZ32-AS50-60-95



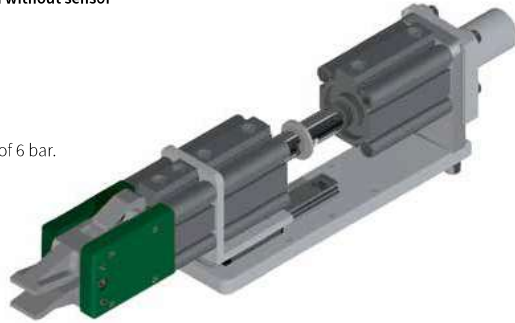
GRIPPING PLIERS GZE32



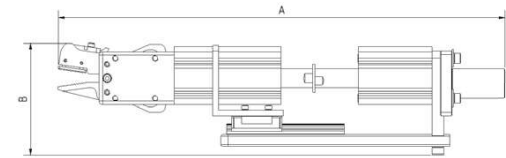
	A	B	Depth	Piab No.
GZE321010 - DH3020 - 25	382	90	45	0213360
GZE321010 - DH1010 - 25	322	90	45	0213359
GZE326060 - DH2010 - 25	342	75	40	0213361
GZE326060 - DH3020 - 25	382	75	40	0213362
GZE321060 - DH2010 - 25	382	75	40	0216320
GZE321060 - DH3020 - 25	382	75	40	0216321

Gripping pliers unit GZE25 / GZE32 with double stroke and without sensor

- Activity: double-acting.
- Fixing possibility on two sides.
- Ball-bearing slides with precision guidance.
- Adjustable low profile linear guide.
- The heavy-duty solution with double stroke.
- Holding load of 375N / 265N at a working pressure of 6 bar.
- For distance clips refer to page 117.
- Other strokes available as needed.
- Pneumatic connections G1/8 / M5.
- Connection diameter 25 mm.



GRIPPING PLIERS GZE32



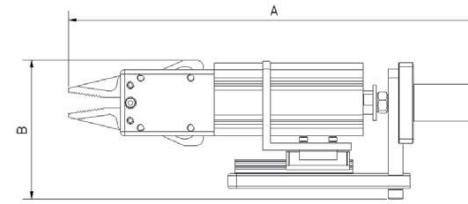
	A	B	Depth	Piab No.
GZE321095 - DH2010 - 25	342	90	45	0213363
GZE321095 - DH3020 - 25	382	90	45	0213364

Gripping pliers unit GZE25 / GZE32 with double stroke and sensor

- Activity: double-acting.
- Fixing possibility on two sides.
- Adjustable low profile linear guide.
- Sensor with 2m cable (version -90).
- Sensor with 0.3 m cable and M8 connector (version -95).



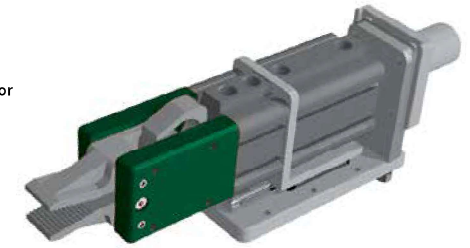
GRIPPING PLIERS GZE32



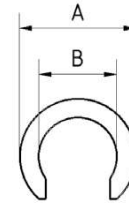
	A	B	Depth	Piab No.
GZE321010 - EH10 - 25	299	90	45	0213408
GZE321010 - EH20 - 25	269	90	45	0213409
GZE321060 - EH20 - 25	382	75	40	0216322
GZE326060 - EH10 - 25	299	90	45	0213410
GZE326060 - EH10 - 25	269	90	45	0213411

Gripping pliers unit GZE25 / GZE32 with single stroke and without sensor

- Activity: double-acting.
- Fixing possibility on two sides.
- Adjustable low profile linear guide.
- The heavy-duty solution with single stroke.
- Holding load of 375N / 265N at a working pressure of 6 bar.
- Other strokes available as needed.
- Pneumatic connections G1/8 / M5.
- Connection diameter 25 mm.



DISTANCE CLIPS

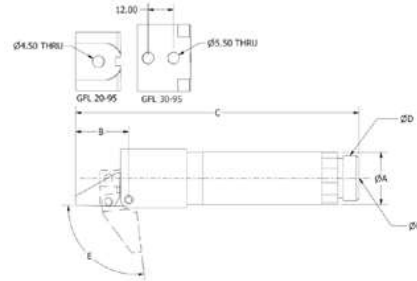


- Distance clips used to reduce the strokes of cylinders.
- Material: plastic

	A	B	Depth	Piab No.
DK16 - 3	24	16	3	0213379
DK16 - 5	24	16	5	0213380
DK16 - 10	24	16	10	0213378



GFL DOUBLE ACTING GRIPPER FINGER



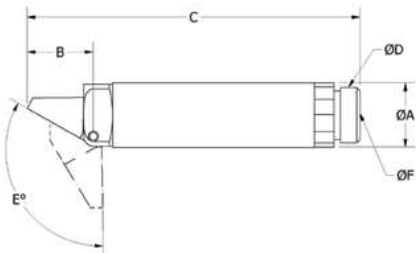
- Cam locking design remains locked in the event of pressure loss.
- Normally is protected and located with our ZTS and backed up with the ANF finger guide.
- Extendable for longer reach using VLR arm extensions.
- Fully compatible with Piab's modular EOAT gripper system.
- Has two M5 thru holes on gripper finger head, 12mm apart.

Requirements

- Maximum air pressure 87 psi (6 bar).
- Requires filtered dry air.

	A	B	C	D	E (Degrees)	F	Force (N)	Weight (g)	Piab No.
GFL 20-95	20	20	107	M17x1	95	G 1/8"	110	83	0214317
GFL 30-95	30	33	147	M17x1	95	G 1/8"	160	245	0214318

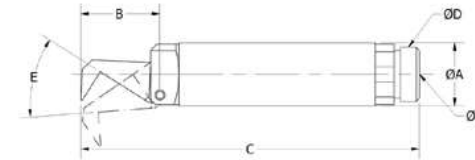
GRF GRIPPER FINGERS



- Normally is protected and located with our ZTS and backed-up with the ANF.
- Finger guide.
- Pneumatically single acting, spring return function.
- Extendable for longer reach using VLR Arm Extensions.
- Fully compatible with modular EOAT gripper system.

	A	B	C	D	E (Degrees)	F	Weight (g)	Piab No.
GRF 14-120	55	71	3.27	M12x1	120	M5"	88	0213164
GRF 20-120	79	79	4.06	M17x1	120	G 1/8"	2.12	0213165
GRF 30-120	1.18	1.22	5.91	M27x1	120	G 1/8"	6.88	0213166

GRF GRIPPER FINGER (SPRING RETURN)



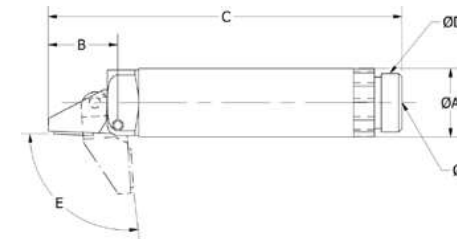
- Finger claw that securely flips & reaches around the part.
- Especially designed for difficult part-removal applications.
- Pneumatically single acting, spring return function.
- Extendable for longer reach using VLR Arm Extensions.
- Fully compatible with Piab's modular EOAT gripper system.

Requirements

- Maximum air pressure 87 psi (6 bar).
- Requires filtered dry air.

	A	B	C	D	E (Degrees)	F	Force (N)	Weight (g)	Piab No.
GRF 14-35	14	18.5	84	M12 x 1	35	G 1/8"	25	30	0213158
GRF 20-35	20	23	105	M17 x 1	35	G 1/8"	55	102	0213159
GRF 30-35	30	34	142	M27 x 1	35	G 1/8"	190	207	0213155

GRF WITH VITON RUBBER PADDED GRIPPER FINGER



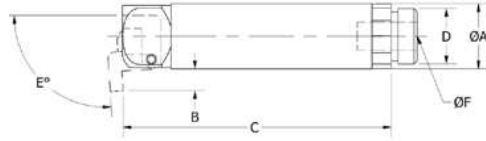
- GRF gripper finger with Viton rubber pad.
- Prevents marring of finished parts.
- Pneumatically single acting, spring return function.
- Extendable for longer reach using VLR Arm Extensions.
- Fully compatible with Piab's modular EOAT gripper system.

Requirements

- Maximum air pressure 87 psi (6 bar).
- Requires filtered dry air.

	A	B	C	D	E (Degrees)	F	Force (N)	Weight (g)	Piab No.
GRF 14-95 VP	14	19	77	M12 x 1	95	M5	16	30	0213151
GRF 20-95 VP	20	20	95	M17 x 1	95	G 1/8"	42	60	0213154
GRF 30-95 VP	30	29	137	M27 x 1	95	G 1/8"	120	200	0213157

GRF GRIPPER FINGER (SPRING RETURN)



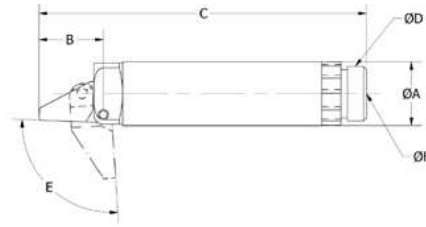
- Specially designed to flip and secure thin edges.
- Normally is backed-up with our ANS finger guide.
- Pneumatically single acting, spring return function.
- Extendable for longer reach using VLR Arm Extensions.
- Fully compatible with Piab's modular EOAT gripper system.

Requirements

- Maximum air pressure 87 psi (6 bar).
- Requires filtered dry air.

	A	B	C	D	E (Degrees)	F	Force (N)	Weight (g)	Piab No.
GRF 14-90	14	5	72	M12x1	90	M5	20	78	0213161
GRF 20-90	20	7	83	M17x1	90	G 1/8"	95	58	0213162
GRF 30-90	30	11	124	M27x1	90	G 1/8"	220	205	0213163

GRF GRIPPER FINGER (SPRING RETURN)



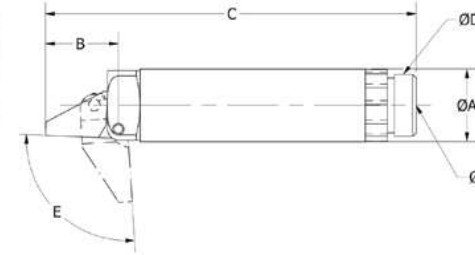
- Our popular gripper finger solution to secure difficult parts.
- Normally is protected and located with our ZTS and backed-up with the ANF finger guide.
- Pneumatically single acting, spring return function.
- Extendable for longer reach using VLR Arm Extensions.
- Fully compatible with Piab's modular EOAT gripper system.

Requirements

- Maximum air pressure 87 psi (6 bar).
- Requires filtered dry air.

	A	B	C	D	E (Degrees)	F	Force (N)	Weight (g)	Sensor Kit	Piab No.
GRF 14-95 C	14	19	77	M12 x 1	95	M5	16	30	GRF 14 SR	0213150
GRF 20-95 C	20	20	95	M17 x 1	95	G 1/8"	42	61	GRF 20 SR	0213153
GRF 30-95 C	30	29	137	M27 x 1	95	G 1/8"	120	204	GRF 30 SR	0213156

GRF GRIPPER FINGER (SPRING RETURN)



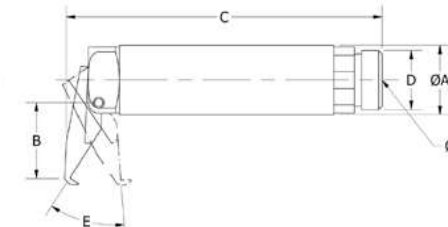
- Our popular gripper finger solution to secure difficult parts.
- Normally is protected and located with our ZTS and backed-up with the ANF finger guide.
- Pneumatically single acting, spring return function.
- Extendable for longer reach using VLR Arm Extensions.
- Fully compatible with Piab's modular EOAT gripper system.

Requirements

- Maximum air pressure 87 psi (6 bar).
- Requires filtered dry air.

	A	B	C	D	E (Degrees)	F	Force (N)	Weight (g)	Sensors	Piab No.
GRF 14-95	14	19	77	M12 x 1	95	M5	16	30	No	0213149
GRF 20-95	20	20	95	M17 x 1	95	G 1/8"	42	61	No	0213152
GRF 30-95	30	29	137	M27 x 1	95	G 1/8"	120	204	No	0213155

GRW GRIPPER FINGER (SPRING RETURN)



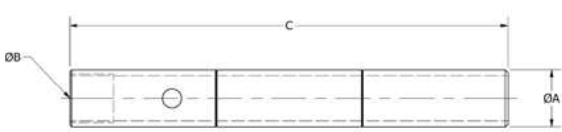
- Finger claw that flips and grips securely around the part.
- Especially designed for difficult part-removal applications.
- Pneumatically single acting, spring return function.
- Extendable for longer reach using VLR Arm Extensions.
- Fully compatible with Piab's modular EOAT gripper system.

Requirements

- Maximum air pressure 87 psi (6 bar).
- Requires filtered dry air.

	A	B	C	D	E (Degrees)	F	Force (N)	Weight (g)	Sensors	Piab No.
GRW 20-35	20	20	85	M17 x 1	35	G 1/8"	50	62	-	0214352
GRW 30-35	30	34	123	M27 x 1	35	G 1/8"	160	203	Yes	0214353

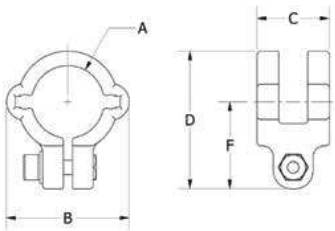
ARM EXTENSIONS



- Extends GRF and GRW gripper fingers.
- Attaches to ADZ and ADG cylinder adapters and to ZTB locators.
- Tightening hole for securing connection to mating parts.

	A	B	C	Weight (g)	Piab No.
VLR 10-90	10	M8 x 1	90	9	0213182
VLR 14-120	14	M12 x 1	120	19	0213183
VLR 20-150	20	M17 x 1	150	46	0213184
VLR 30-200	30	M27 x 1	200	94	0213185

GRF SENSOR MOUNTS



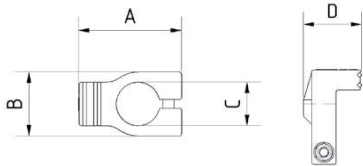
- Allows mounting of 1 or 2 sensors to sensor capable GRF's.
- The sensors can sense open or closed position of the fingers.
- Typically used with VLR extension arms.

*Optional sensor: RRK-93, RRK-93-TP, RRK-M9P, or RRK-M9P-TP.



	A	B	C	D	F	Piab No.
GRF 14 SR	14	28	18	29	18	0213167
GRF 20 SR	20	34	20	38	24	0213168
GRF 30 SR	30	44	26	51	32	0213169

FIXING DEVICES FOR GRIPPING FINGERS

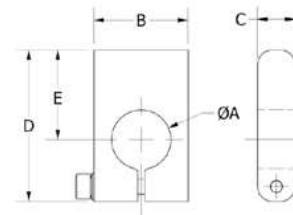


- Fixing devices for gripping fingers with a rubberized layer.
- Rubberized and silicone-free layer.



	A	B	C	D	Piab No.
GZK20 - 50 - 50	40.5	24	14	22.5	0213339
GZK20 - 60 - 60	47.3	30	20	28.5	0213340

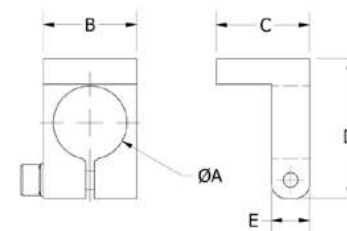
ANF DELRIN FINGER ACCESSORY



- Used as a finger backup and locator.
- Made of Delrin to protect part.

	A	B	C	D	E	Gripper Finger	Weight (g)	Piab No.
ANF 14	14	22	10	42	25	GRF 14-95 / GRF 14-95 VP	13	0213173
ANF 20	20	32	13	51	30	GRF 20-95 / GRF 20-95 VP / GRW 20-35	26	0213174
ANF 30	30	38	19	66	42	GRF 30-95 / GRF 30-95 VP / GRW 30-35	52	0213175
ANF 14 P	30	38	19	66	42	GRF 14-95 / GRF 14-95 VP	52	0213176
ANF 20 P	30	38	19	66	42	GRF 20-95 / GRF 20-95 VP / GRW 20-3	52	0213177
ANF 30 P	30	38	19	66	42	GRF 30-95 / GRF 30-95 VP / GRW 30-35	52	0213178

ANS DELRIN FINGER ACCESSORY

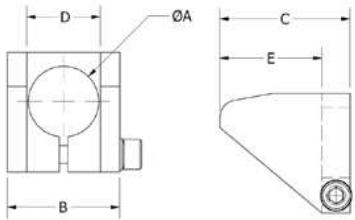


- Used with GRF...90 to back up the finger for a firm mechanical grip.
- Made of Delrin to protect part.



	A	B	C	D	E	Gripper Finger	Weight (g)	Piab No.
ANS 14	14	19	23	31	10	GRF 14-90	10	0213179
ANS 20	20	25	25	38	10	GRF 20-90	17	0215263
ANS 30	30	38	38	57	11	GRF 30-90	30	0213181

ZTS DELRIN FINGER ACCESSORY

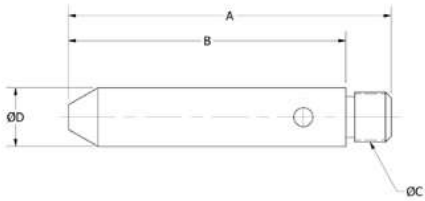


- Aligns part to finger.
- Protects both part and finger.



	A	B	C	D	E	Gripper Finger	Weight (g)	Piab No.
ZTS 14-95	14	25	35	17	27	GRF 14-95	13	0213170
ZTS 20-95	20	32	37	22	29	GRF 20-95	21	0213171
ZTS 30-95	30	45	65	32	53	GRF 30-95	84	0213172

ZTB DELRIN LOCATOR PIN



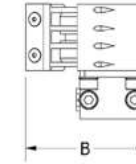
- Aligns and locates EOAT to parts.
- Clamps directly into standard mounting clamps and mates to VLR Arm Extensions.
- Tightening hole for secure connection to VLR's.



	A	B	C	D	Extension	Weight (g)	Piab No.
ZTB 10	50	40	M8 x 1	10	VLR 10-L	4	0213186
ZTB 14	110	95	M12 x 1	14	VLR 14-L	19	0213187
ZTB 20	110	95	M17 x 1	20	VLR 20-L	44	0213188
ZTB 30	100	85	M27 x 1	30	VLR 30-L	91	0213189

GRN 12-10 X NEEDLE GRIPPER

Product Code: GRN 12-10 X

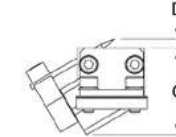
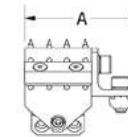


- Ideal for gripping fabric or mesh.
- Normally used in insert molding applications.
- Adjustable needle length.
- Replacement needles also available.

*Optional sensor: RRK-93, RRK-93-TP, RRK-M9P-TP or RRK-M9P-TP.

Requirements

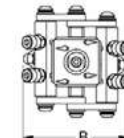
- Maximum air pressure 87 psi (6 bar).
- Requires filtered dry air.



	A	B	C	D	Air Cons. (cm ³ / Hub)	Sensor (optional)	Weight (g)	Piab No.
GRN 12-10 X	55	56	41	0-5	1.13	RRK-93/RRK-93P	132	0214349

GRN 12-10-14 NEEDLE GRIPPER

Product Code: GRN 12-10-14

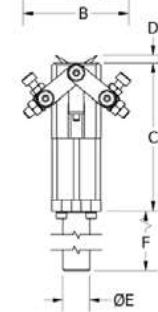
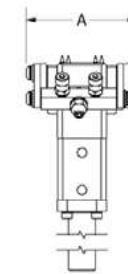


- Ideal for gripping fabric or mesh.
- Normally used in insert molding applications.
- Adjustable needle length.
- Replacement needles also available.

*Optional sensor: RRK-93, RRK-93-TP, RRK-M9P, or RRK-M9P-TP.

Requirements

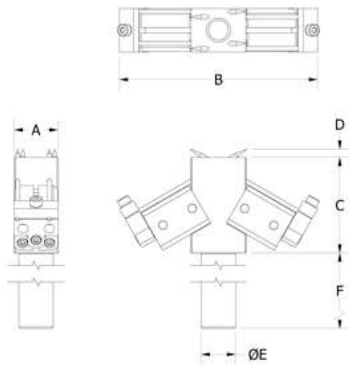
- Maximum air pressure 87 psi (6 bar).
- Requires filtered dry air.



	A	B	C	D	E	F	Air Cons. (cm ³ / Hub)	Sensor (optional)	Weight (g)	Piab No.
GRN 12-10-14	57	55	77	0-5	14	40	1.13	RRK-93/RRK-93P	232	0214350

GRN 12-10-20 NEEDLE GRIPPER

Product Code: GRN 12-10-20



- Ideal for gripping fabric or mesh.
- Normally used in insert molding applications.
- Adjustable to needle lengths.
- Replacement needles available.
- Spring loaded for compliance.

*Optional sensor: RRK-93, RRK-93-TP, RRK-M9P, or RRK-M9P-TP.

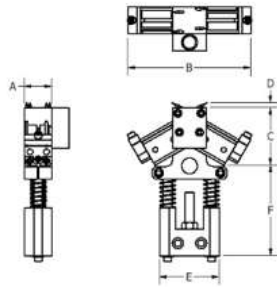
Requirements

- Maximum air pressure 87 psi (6 bar).
- Requires filtered dry air.

GRN 12-10-20	A	B	C	D	E	F	Air Cons. (cm3/ Hub)	Sensor (optional)	Weight (g)	Piab No.
	25	112	55	0-3	20	50	1.13	RRK-93/RRK-F9P	294	0214351

GRN 12-10 SL NEEDLE GRIPPER

Product Code: GRN 12-10 SL



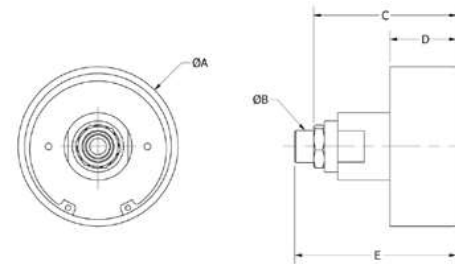
- Ideal for gripping fabric or mesh.
- Normally used in insert molding applications.
- Adjustable to needle lengths.
- Replacement needles available.
- Spring loaded for compliance.

Requirements

- Maximum air pressure 87 psi (6 bar).
- Requires filtered dry air.

GRN 12-10 SL	A	B	C	D	E	F	Air Cons. (cm3/ Hub)	Weight (g)	Piab No.
	25	81	40	0-5	56	84	1.13	722	0214348

MAGNETIC GRIPPERS



Part #	A	B	C	D	E	Weight (g)	Piab No.
GRM 38-3/8	38	G3/8"	74	32	85	269	0214346
GRM 76-3/8	76	G3/8"	76	32	85	370	0214347
GRM 127-3/8	127	G3/8"	111	50	122	1360	0214345

GRM 38-3/8

Product Code: GRM 38-3/8



GRM 76-3/8

Product Code: GRM 76-3/8



GRM 127-3/8

Product Code: GRM 127-3/8



BLACK URETHANE BOOTS

Part #	Non-Skid Covers	Weight (g)	Piab No.
GRB 38	Black Urethane Boot for GRM 38-3/8	13	0214343
GRB 76	Black Urethane Boot for GRM 76-3/8	25	0214344
GRB 127	Black Urethane Boot for GRM 127-3/8	45	0214342

Low Skid Boots protect against marring of class "A" blanks while extending the life of the magnet by protecting the face from wear. In many applications the boots and pads also assist in keeping parts from shifting under shear in transport. The boots cover the edge of the cup for complete blank protection while the pads cover the face of the cup for increased wear protection to extend the life of the magnet.

