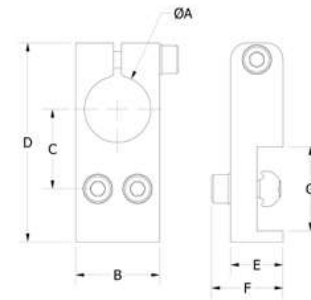




We offer a broad range of mounting connectors, plates, clamps, and arms, each highly configurable and made of high-quality materials.

- Ensuring **proper balance** of weight and rigidity
- **Versatile, adjustable, and compliant**, working with grippers, cutters, sensors, and more
- Expansive product and engineering **knowledge**

## ANGLE CLAMPS

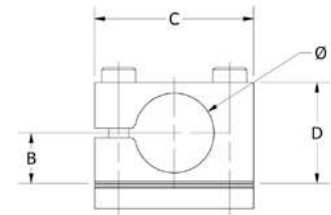


- Allows for top mounting of gripper arms or holders to frame profile.
- Adjustable along the channel of the frame profile.

	A	B	C	D	E	F	G	Weight (g)	Plab No.
<b>WST 10 L</b>	10	16	16	40	10	14	18	23	0213024
<b>WST 10 X</b>	10	16	20	47	10	14	25	24	0213025
<b>WST 14 X</b>	14	25	21	52	13	19	25	44	0213026
<b>WST 20 X</b>	20	25	24	60	16	22	25	59	0213027
<b>WST 30 X</b>	30	38	30	73	19	26	25	113	0213028
<b>WST 20 JX</b>	20	32	34	77	16	23	40	93	0214787
<b>WST 30 JX</b>	30	45	39	92	19	26	40	164	0214788



## CROSS CLAMPS

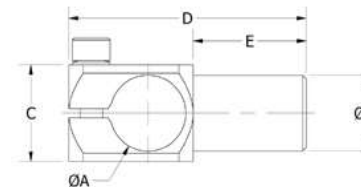


- Allows for side mounting of gripper arms to frame profiles.
- Allows for mounting of Tube (T) profiles to standard frame profiles.
- Use with X-type, HX-type, or JX-type profile.

	A	B	C	D	Weight (g)	Plab No.
<b>KVB 10</b>	10	8	25	16	23	0213020
<b>KVB 14</b>	14	10	34	19	38	0213021
<b>KVB 20</b>	20	18	40	25	51	0213022
<b>KVB 30</b>	30	18	50.8	38	94	0213023



## INSERT CLAMPS

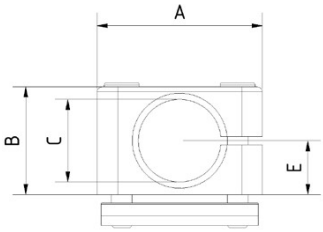


- Supplies 90° mounting with rotation.
- Short shaft clamp.

	A	B	C	D	E	Weight (g)	Plab No.
<b>SKS 20</b>	20	20	25	63	30	54	0214620
<b>SKS 20-30</b>	30	20	38	78	34	81	0214621



CROSS CLAMP

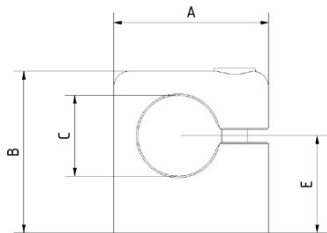


- Robust construction.
- Precise fitting.
- All edges are rounded.
- Suitable for S-, X-, and L-series.



	A	B	C	Depth	E	Piab No.
<b>AN16 - X</b>	38	22	16	12	11	0213276
<b>AN25 - X</b>	45	30	25	18	15	0213277

TUBE CLAMP

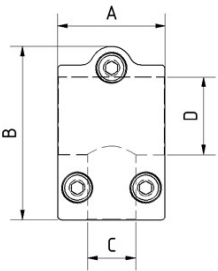


- Additional adapter plates are available as needed.
- Centerings are available for the aluminum profile of the X-series and the FFLS.
- Material: aluminum.



	A	B	C	Depth	E	Piab No.
<b>AN16</b>	31	35	16	15	22	0213273
<b>AN25</b>	48	50	25	20	30	0213274
<b>AN40</b>	72	70	40	30	40	0213275

CROSS CLAMPS

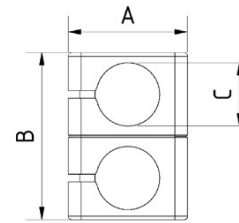


- High-level torques can be absorbed using T version cross clamps. This cross-clamp can be easily adjusted and assembled WITHOUT removing various components of the existing gripper.
- All edges are rounded.
- The threads are formed.
- Low component weight.
- The surfaces are refined / anodized.



	A	B	C	D	Depth	Piab No.
<b>KKTG16 - 16</b>	35	55	16	16	22	0213420
<b>KKTG25 - 25</b>	48	78	25	25	32	0213421
<b>KKTG40 - 25</b>	62	93.5	25	40	52	0213422
<b>KKTG40 - 40</b>	79	141	40	40	59	0216337

CROSS PARALLEL CLAMPS

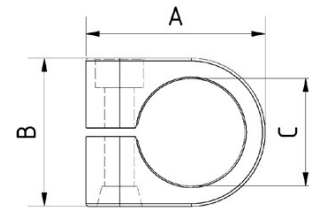


- Cross/parallel clamps, divided in two parts:
  - 1) flat and
  - 2) turning the separate elements you can quickly turn a cross clamp into a parallel clamp.
- All edges are rounded.
- The threads are formed.
- The surfaces are refined/anodized.



	A	B	C	Depth	Piab No.
<b>KKZ25 - 25</b>	47	66	25	47	0213423
<b>PKZ25 - 25</b>	47	66	25	47	0213450

CLAMPS

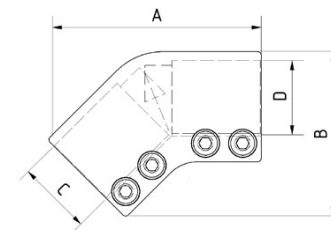


- The clamps consist of a special aluminum alloy and have a through hole for screwing two-sided extensions on both sides.
- The surfaces are refined / anodized.

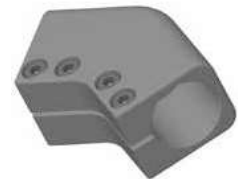


	A	B	C	Depth	Piab No.
<b>KS16 - 10</b>	31.5	27	10	20	0213424
<b>KS16 - 14</b>	38	31	14	20	0213425
<b>KS16 - 16</b>	38	31	16	20	0213426
<b>KS16 - 20</b>	38	31	20	20	0213427
<b>KS25 - 20</b>	48.5	34	20	25	0213428
<b>KS25 - 25</b>	51	39	25	25	0213429
<b>KS25 - 40</b>	67	55	40	25	0213430

ELBOW CLAMPS

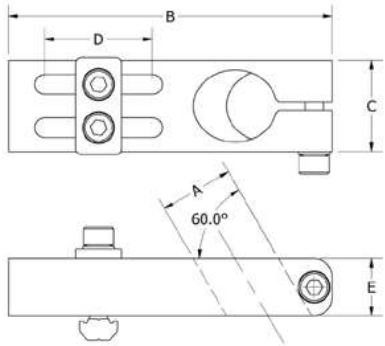


- Cross/parallel clamps, divided in two parts. Extremely flat component. Through turning of the separate elements you can quickly turn a cross clamp into a parallel clamp.
- All edges are rounded.
- The threads are formed.
- The surfaces are refined/anodized.



	A	B	C	D	Depth	Piab No.
<b>WK45 - 16 - 16</b>	65	38	16	16	26	0213470
<b>WK45 - 25 - 25</b>	87	60	25	25	35	0213471
<b>WK45 - 40 - 40</b>	114	89	40	40	50	0213472

**LONG ANGLE CLAMPS**

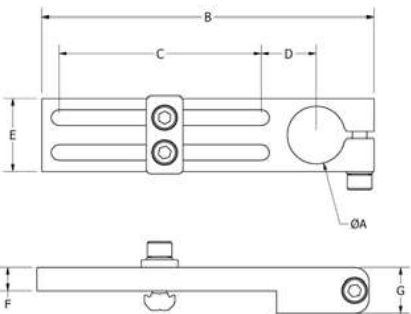


- Mounts components and extension arms at a 30° angle to profile surface.
- Adjustable parallel and perpendicular to frame profile.
- Can mount to all profile with a channel.

	A	B	C	D	E	Weight (g)	Plab No.
<b>WSA 10</b>	10	65	16	20	9.5	34	0214760
<b>WSA 14</b>	14	80	25	25	15.9	94	0214761
<b>WSA 20</b>	20	90	25.4	30	15.9	94	0214762
<b>WSA 30</b>	30	115	38	40	19	138	0214763



**LONG ANGLE CLAMPS**

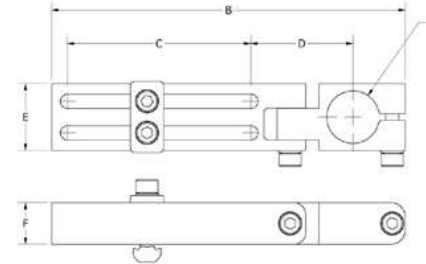


- Allows for top mounting of gripper arms and holders to frame profile.
- Adjustable parallel and perpendicular to the frame.
- Aluminum clamps are more rigid for instances where precise locating is needed such as GRF gripper fingers and MR cutters.
- Can mount to all profile with a channel.

	A	B	C	D	E	F	G	Weight (g)	Plab No.
<b>WSL 10</b>	10	80	47	14	16	6	10	29	0213029
<b>WSL 14</b>	14	100	62	16	22	8	13	55	0213030
<b>WSL 20</b>	20	115	70	19	25	8	16	74	0213031
<b>WSL 20 JX</b>	20	132	74	30	32	16	16	150	0214779
<b>WSL 30 JX</b>	30	137	64	35	45	19	19	281	0214784
<b>WSL 14-100</b>	14	139	100	16	22.2	7.5	12.7	70	0214778
<b>WSL 20-100</b>	20	146	100	19	25.4	8	15.3	90	0214783



**ANGLE CLAMPS**

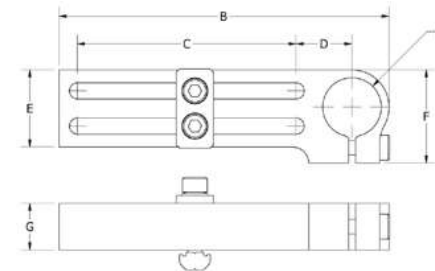


- Allows for top mounting of gripper arms and holders to frame profile.
- Adjustable parallel and perpendicular to the frame.
- Clamps offers a swivel mounting.
- Can mount to all profile with a channel.

	A	B	C	D	E	F	Weight (g)	Plab No.
<b>WSL 10 SH</b>	10	90	45	26	16	10	39	0214772
<b>WSL 14 SH</b>	14	113.5	60	31.5	22.3	13	80	0214775
<b>WSL 20 SH</b>	20	135	70	39	25.4	16	123	0214780
<b>WSL 30 SH</b>	30	153	70	49	38	19	250	0214785



**LONG ANGLE CLAMPS**



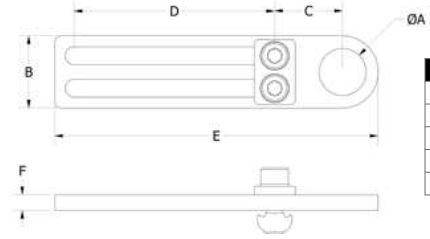
- Allows for top or bottom mounting of gripper arms or holders to frame profile.
- Adjustable parallel and perpendicular to the frame.
- Thick aluminum clamps are more rigid for use with extremely heavy parts.
- Allows for close mounting of clamps.
- Can mount to all profile with a channel.

	A	B	C	D	E	F	G	Weight (g)	Plab No.
<b>WSL 10 TRB</b>	10	80	47	14	17	22	10	35	0213037
<b>WSL 14 TRB</b>	14	100	64	16	20	25	13	59	0213038
<b>WSL 20 TRB</b>	20	115	75	19	26	32	16	110	0213039
<b>WSL 30 TRB</b>	30	130	77	28	37	45	19	205	0213040



LONG ANGLE PLATES

- Mounts lightweight vacuum cup holders to our standard frame profile.

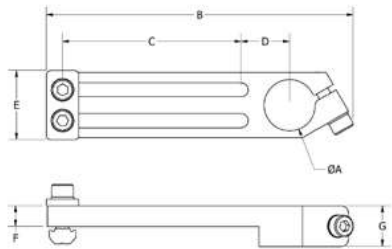


	A	B	C	D	E	F	Weight (g)	Piab No.
<b>WSF 10.5</b>	10.5	15.9	13	47	80	3	21	0214767
<b>WSF 12.5</b>	13	27	21	57	100	3	36.6	0214768
<b>WSF 14.5</b>	14.5	22.3	21	62	100	5	37	0214769
<b>WSF 16.5</b>	17	27	21	57	100	5	34.7	0214770
<b>WSF 20.5</b>	20.5	31.8	24	70	115	5	56	0214771

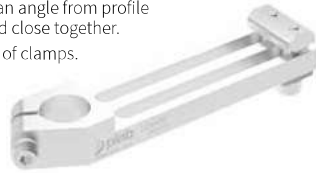


LONG ANGLE PLATES

- Allows for top mounting of gripper arms or holders to frame profile.
- Adjustable parallel and perpendicular to the frame.
- Screw head points out at an angle from profile so clamps can be mounted close together.
- Allows for close mounting of clamps.

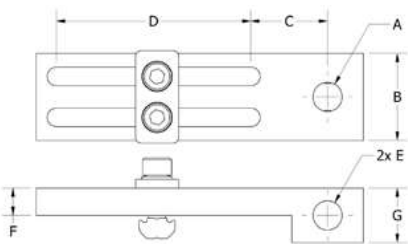


	A	B	C	D	E	F	G	Weight (g)	Piab No.
<b>WSV 10</b>	10	82	47	14	18	6	10	30	0213033
<b>WSV 14</b>	14	104	62	16	20	8	13	50	0213034
<b>WSV 20</b>	20	120	70	19	27	8	16	75	0213035
<b>WSV 30</b>	30	136	68	28	38	10	19	140	0213036



LONG ANGLE CONNECTORS

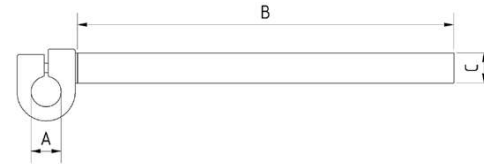
- Allows for low-profile height by mounting vacuum cups directly to the frame.
- Adjusts parallel & perpendicular to the profile.
- Extra port can connect vacuum to another cup.



	A	B	C	D	E	F	G	Weight (g)	Piab No.
<b>WLS M5</b>	M5	16	16	45	M5	6	13	28	0213041
<b>WLS 1/8"</b>	G 1/8"	25	23	57	G 1/8"	8	16	68	0213042
<b>WLS 1/4"</b>	G 1/4"	25	23	57	G 1/8"	8	16	67	0213043



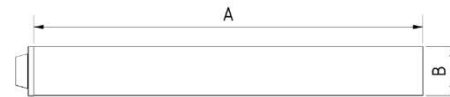
ONE-SIDED EXTENSION WITH CLAMP



- Allows for additional flexibility and settings.
- Optimal load transmission.
- Additional lengths available.
- The surfaces are refined / anodized.

	A	B	C	Piab No.
<b>EV16 - 14 - 100</b>	14	100	16	0213278
<b>EV16 - 16 - 100</b>	16	100	16	0213279
<b>EV16 - 20 - 100</b>	20	100	16	0213280
<b>EV16 - 25 - 100</b>	25	100	16	0213281
<b>EV16 - 14 - 200</b>	14	200	16	0213282
<b>EV16 - 16 - 200</b>	16	200	16	0213283
<b>EV16 - 20 - 200</b>	20	200	16	0213284
<b>EV16 - 25 - 200</b>	25	200	16	0213285
<b>EV16 - 16 - 300</b>	16	300	16	0213286
<b>EV16 - 20 - 300</b>	20	300	16	0213287
<b>EV16 - 25 - 300</b>	25	300	16	0213288
<b>EV25 - 20 - 100</b>	20	100	25	0213289
<b>EV25 - 25 - 100</b>	25	100	25	0213290
<b>EV25 - 40 - 100</b>	40	100	25	0213291
<b>EV25 - 20 - 200</b>	20	100	25	0213292
<b>EV25 - 25 - 200</b>	25	200	25	0213293
<b>EV25 - 40 - 200</b>	40	200	25	0213294
<b>EV25 - 20 - 300</b>	20	300	25	0213295
<b>EV25 - 25 - 300</b>	25	300	25	0213296
<b>EV25 - 40 - 300</b>	40	300	25	0213297
<b>EV25 - 40 - 400</b>	40	400	25	0216024

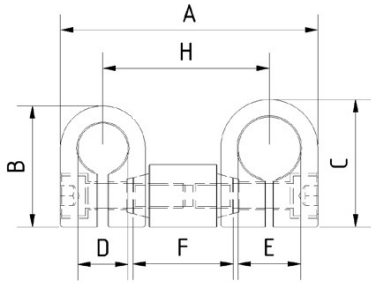
ONE-SIDED EXTENSION



- Seamless mounting of the double-sided extension (ZV). The aluminum pipes consist of a special aluminum alloy.
- Additional lengths available.
- The surfaces are refined / anodized.

	A	B	Piab No.
<b>EV16 - 100</b>	100	16	0213384
<b>EV16 - 200</b>	200	16	0213385
<b>EV16 - 300</b>	300	16	0213386
<b>EV25 - 100</b>	100	25	0213387
<b>EV25 - 200</b>	200	25	0213388
<b>EV25 - 300</b>	300	25	0213389
<b>EV16/25 - 100</b>	100	16	0213381
<b>EV16/25 - 200</b>	200	16	0213382
<b>EV16/25 - 300</b>	300	16	0213383

TWO SIDED EXTENSIONS

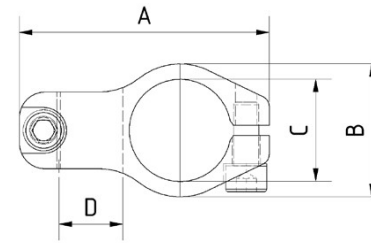


- Allows for additional flexibility and settings.
- Optimal load transmission.
- Long version provides optimum component distribution at the withdrawal gripper.
- The surfaces are refined / anodized.

	A	B	C	D	E	F	Depth	H	Plab No.
ZV16 - 16 - 10 - 30	70	31.5	38	10	16	30	20	41	0213298
ZV16 - 16 - 14 - 30	73	38	38	14	16	30	20	41	0213299
ZV16 - 16 - 16 - 30	73	38	38	16	16	30	20	41	0213300
ZV16 - 16 - 20 - 30	73	38	38	20	16	30	20	41	0213301
ZV16 - 16 - 10 - 50	90	31.5	38	10	16	50	20	61	0213302
ZV16 - 16 - 14 - 50	93	38	38	14	16	50	20	61	0213303
ZV16 - 16 - 16 - 50	93	38	38	16	16	50	20	61	0213304
ZV16 - 16 - 20 - 50	93	38	38	20	16	50	20	61	0213305
ZV-25 - 25 - 20 - 40	102	48.5	51	20	25	40	25	67	0213306
ZV25 - 25 - 25 - 40	107	51	51	25	25	40	25	68	0213307
ZV25 - 40 - 20 - 40	118	48.5	66	20	40	40	25	75	0213308
ZV25 - 40 - 25 - 40	123	38	66	26	40	40	25	77	0213309
ZV25 - 40 - 40 - 40	141	66	66	40	40	40	25	85	0213310
ZV25 - 25 - 20 - 66	129	48.5	51	20	25	66	25	92	0213311
ZV25 - 25 - 25 - 66	134	51	51	25	25	66	25	93	0213312
ZV25 - 40 - 20 - 66	145	48.5	66	20	40	66	25	101	0213313
ZV25 - 40 - 25 - 66	150	38	66	25	40	66	25	103	0213314
ZV25 - 40 - 40 - 66	166	66	66	40	40	66	25	111	0213315
ZV25 - 25 - 20 - 125	188	48.5	51	20	25	125	25	152	0213316
ZV25 - 25 - 25 - 125	193	51	51	25	25	125	25	153	0213317
ZV25 - 40 - 20 - 125	204	48.5	66	22	40	125	25	160	0213318
ZV25 - 40 - 25 - 125	209	38	66	25	40	125	25	162	0213319
ZV25 - 40 - 40 - 125	225	66	66	40	40	125	25	170	0213320
ZV25 - 25 - 20G - 40	102	48.5	51	20	25	40	25	67	0216435
ZV25 - 25 - 25G - 40	107	51	51	25	25	40	25	68	0216438
ZV25 - 25 - 20G - 20	83	48.5	51	20	25	20	25	47	0216434
ZV25 - 25 - 25G - 20	88	51	51	25	25	20	25	48	0216437
ZV25 - 25 - 20G - 66	129	48.5	51	20	25	66	25	92	0216436
ZV25 - 25 - 25G - 66	134	51	51	25	25	66	25	93	0216439



TUBE CROSS CLAMPS

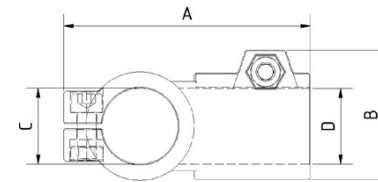


- Tube cross clamps provide safe connections.
- All edges are rounded.
- The threads are formed.
- The surfaces are refined / anodized.

	A	B	C	D	Depth	Plab No.
KK16 - 14	54	25	16	14	25	0213321
KK16 - 16	54	25	16	16	25	0213322
KK16 - 20	54	25	16	20	25	0213323
KK25 - 16	71	33	25	16	22	0213324
KK25 - 25	86	40	25	25	40	0213325
KK40 - 25	98	52	40	25	37	0213326
KK40 - 40	130	60	40	40	60	0213327



TUBE CROSS CLAMPS

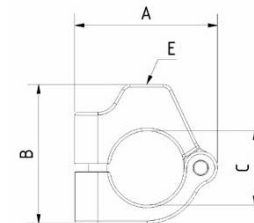


- Tube cross clamps provide safe connections.
- All edges are rounded.

	A	B	C	D	Depth	Plab No.
KKT16 - 16	55	35	16	16	25	0213328
KKT25 - 25	93	53	25	25	40	0213329
KKT40 - 25	92	54	40	25	52	0213330
KKT40 - 40	130	68	40	40	56	0213331



CLAMPS

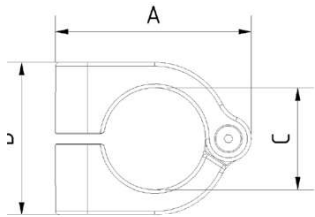


- Clamps foldable with eyelet thread. Suitable for retrofitting. Can be retrofitted to most any location easily.
- Material: high-strength aluminum.
- Add-on mounting possible.
- Very narrow version.
- The surfaces are refined / anodized.

	A	B	C	Depth	E	Plab No.
KSK25 - 25 - Ø - M8	62	60	25	25	M8	0213432
KSK25 - 40 - Ø - M10	77	75	40	25	M10	0213434

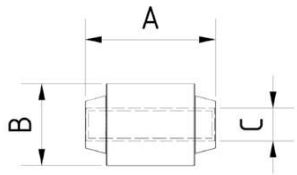


CLAMPS



- Clamps foldable with eyelet thread. Suitable for retrofitting and can be retrofitted to most any location easily.
- Material: high-strength aluminum.
- Add-on mounting possible.
- Very narrow version.
- The surfaces are refined / anodized.

	A	B	C	Depth	Plab No.
<b>KSK25 - 25</b>	77	45	25	25	0213431
<b>KSK25 - 40</b>	77	60	40	25	0213433

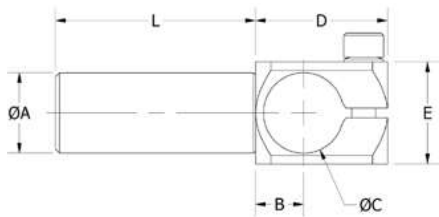


- The clamps consist of a special aluminum alloy and have a threaded hole.
- The threads are cut.

	A	B	C	Plab No.
<b>KSVG16 - 30</b>	77	45	M5	0213435
<b>KSVG16 - 50</b>	77	60	M5	0213436
<b>KSVG25 - 40</b>	77	60	M10	0213438
<b>KSVG25 - 66</b>	77	60	M10	0213439



ANGLE ARMS

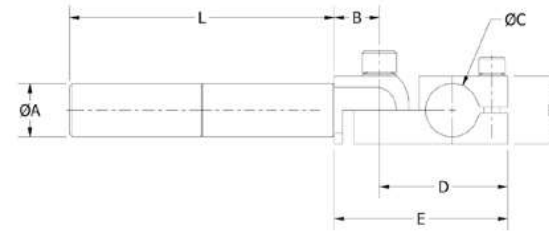


- Extends and mounts components to mounting clamps.
- Supplies 90° mounting with rotation.

	A	B	C	D	E	L	Material	Weight (g)	Plab No.
<b>WKA 10-90</b>	10	7	10	20	16	90	Aluminum	22	0213103
<b>WKA 14-120</b>	14	9	14	25	19	120	Aluminum	40	0213104
<b>WKA 20-150</b>	20	12	20	33	25	150	Aluminum	92	0213105
<b>WKA 30-200</b>	30	19	30	46	38	200	Aluminum	224	0213106



ELBOW ARMS

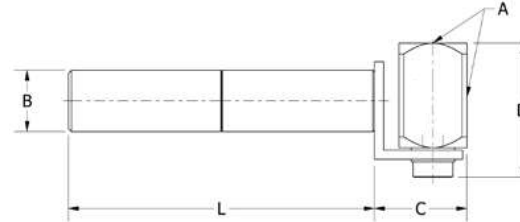


- Angle adjustable elbow.
- Useful for adjustment of GRZ gripper pliers and GRF gripper fingers.



	A	B	C	D	E	F	L	Weight (g)	Material	Plab No.
<b>GLA 10-90</b>	10	11	10	29	40	15.8	90	38	Aluminum	0213089
<b>GLA 14-120</b>	14	15.6	14	40	55.6	19	120	73	Aluminum	0213090
<b>GLA 20-150</b>	20	17	20	48.5	65.5	25.4	150	156	Aluminum	0213092
<b>GLA 20/30-150</b>	20	17	30	63.3	80.3	25.4	150	208	Aluminum	0213091

ELBOW GRIPPER ARMS

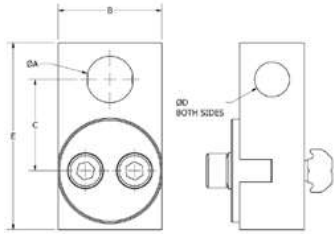


- Extends and mounts vacuum cups to mounting clamps.
- Side ported for quick-touch pneumatic hose connectors.
- Top bracket adjusts angle to match contour of part.
- When clamping shafts, maximum recommended torque on M5 clamping screws is 50 in-lbs (5.6 N-m).

	A	B	C	D	L	Weight (g)	Material	Plab No.
<b>GGE 10-90</b>	M5	10	17	24	90	21	Aluminum	0213107
<b>GGE 14-120</b>	G1/8"	14	24	31	120	45	Aluminum	0213108
<b>GGE 20-150</b>	G1/4"	20	30	40	150	105	Aluminum	0213109
<b>GGE 30-200</b>	G1/4"	30	33	45	200	181	Aluminum	0213110



**ADJUSTABLE ANGLE CONNECTORS**

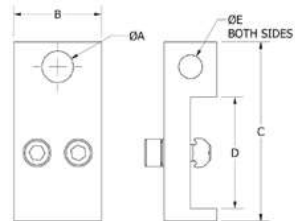


- Allows for low profile height by mounting vacuum cups directly to the frame profile.
- Adjustable along the frame profile and at any rotational angle.

	A	B	C	D	E	Angle	Weight (g)	Piab No.
<b>WSD M5</b>	M5	16	16	M5	32	360	21	0214766
<b>WSD 1/8</b>	G 1/8"	25	23	G 1/8"	46	360	60	0214765
<b>WSD 1/4</b>	G 1/4"	25	23	G 1/8"	46	360	59	0214764



**ANGLE CONNECTORS**

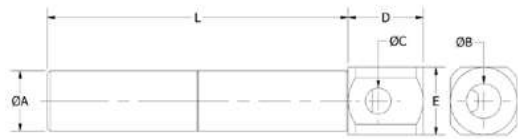


- Allows for low profile height by mounting vacuum cups directly to the frame profile.
- Adjustable along the channel of the frame profile.
- Extra port can connect vacuum to another cup.

	A	B	C	D	E	Weight (g)	Piab No.
<b>WSS M5 L</b>	M5	16	32	18	M5	18	0213041
<b>WSS 1/8 X</b>	G 1/8"	25	46	25	G 1/8"	47	0213042
<b>WSS 1/4 X</b>	G 1/4"	25	46	25	G 1/8"	47	0213043



**GRIPPER ARMS**

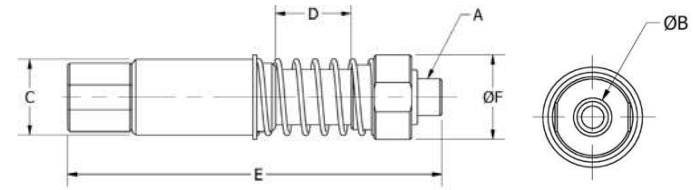


- Extends and mounts vacuum cups to mounting clamps.
- Side ported for quick-touch pneumatic hose connectors.



	A	B	C	D	E	L	Weight (g)	Material	Piab No.
<b>GSE 10-M5-90</b>	10	M5	M5	16	12.7	90	17	Aluminum	0213083
<b>GSE 10-1/8-90</b>	10	G 1/8"	M5	16	16	90	18	Aluminum	0213084
<b>GSE 14-120</b>	14	G 1/8"	G 1/8"	22	16	120	32	Aluminum	0213085
<b>GSE 20-150</b>	20	G 1/4"	G 1/8"	25	22.2	150	47	Aluminum	0213086
<b>GSE 30-200</b>	30	G 1/4"	G 1/4"	31	31.8	200	183	Aluminum	0213087
<b>GSE 30-3/8-200</b>	30	G 3/8"	G 1/4"	31	31.8	200	176	Aluminum	0213088

**NON-ROTATIONAL IN-LINE SPRING-LOADED SPRUE PLIER ARMS**



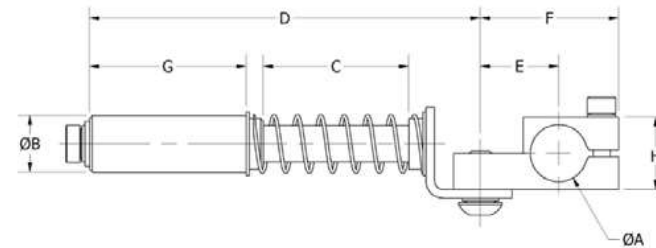
Compatible with Sprue/Part Pliers, this spring-loaded arm enables the GRZ to absorb the ejector stroke of the mold. Used when sprues and runner systems do not stay on the ejector pins after ejection from the mold.

- In-line non-rotational spring arm for Part / Sprue Pliers.
- End ported for quick- touch pneumatic hose connectors.



	A	B	C	D	E	F	Weight (g)	Piab No.
<b>GSZ 10-C-10</b>	M5 x 0.8	M5 x 0.8	10	10	62	13	25	0214397
<b>GSZ 10-M-10</b>	M5 x 0.8	M5 x 0.8	M10 x 1	10	62	13	40	0214398
<b>GSZ 14-C-15</b>	G 1/8	G 1/8	14	15	88	19	72	0214399
<b>GSZ 14-C-40</b>	G 1/8	G 1/8	14	15	113	19	68	0214400
<b>GSZ 14-M-15</b>	G 1/8	G 1/8	M14 x 1.5	40	88	19	72	0214401
<b>GSZ 14-M-40</b>	G 1/8	G 1/8	M14 x 1.5	40	113	19	80	0214402
<b>GSZ 20-C-20</b>	G 1/8	G 1/8	20	20	102	22	135	0214403
<b>GSZ 20-C-20-14</b>	G 1/4	G 1/4	20	20	103	22	135	0214404
<b>GSZ 20-C-50</b>	G 1/8	G 1/8	20	50	129	22	160	0214405
<b>GSZ 20-C-50-14</b>	G 1/4	G 1/4	20	50	133	22	160	0214406
<b>GSZ 20-M-20</b>	G 1/8	G 1/8	M20 x 1.5	20	102	22	135	0214407
<b>GSZ 20-M-20-14</b>	G 1/4	G 1/4	M20 x 1.5	20	103	22	175	0214408
<b>GSZ 20-M-50</b>	G 1/8	G 1/8	M20 x 1.5	50	129	22	200	0214409
<b>GSZ 20-M-50-14</b>	G 1/4	G 1/4	M20 x 1.5	50	133	22	200	0214410

**SPRING-LOADED ELBOW ARMS**

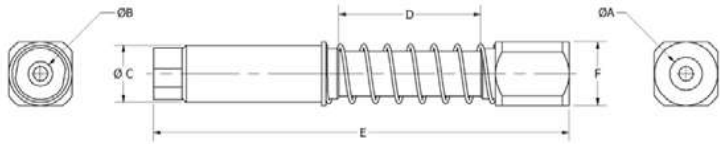


	A	B	C	D	E	F	G	H	Weight (g)	Piab No.
<b>GGA 14-C-15</b>	14	14	15	75	23	40	32	19	113	0214319
<b>GGA 14-C-40</b>	14	14	40	100	23	40	32	19	121	0214320
<b>GGA 20-C-20</b>	20	20	20	107	75.5	48.5	55	25.4	283	0214321
<b>GGA 20-C-50</b>	20	20	50	137	27.5	48.5	55	25.4	311	0214322

- Angle adjustable elbow arm.
- Spring-loaded for part compliance.



**SPRING LOADED GRIPPER ARMS**



- In-line spring arm extends and mounts vacuum cups to mounting clamps.
- End ported for quick-touch pneumatic hose connectors.
- Spring-loaded for part compliance.

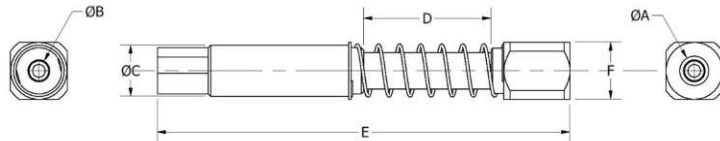
	A	B	C	D	E	F	Weight (g)	Piab No.
<b>GEP 10-C-10</b>	M5	M5	10	10	58	12.7	20	0213063
<b>GEP 14-C-15</b>	G 1/8"	M5	14	15	76	15.9	40	0213065
<b>GEP 14-C-40</b>	G 1/8"	M5	14	40	101	15.9	46	0213067
<b>GEP 20-C-20</b>	G 1/4"	G 1/8"	20	20	111	22.2	123	0213069
<b>GEP 10-M-10</b>	M5	M5	M10 X 1	10	58	12.7	34	0213064
<b>GEP 14-M-15</b>	G 1/8"	M5	M14 X 1.5	15	76	15.9	60	0213066
<b>GEP 20-C-50</b>	G 1/4"	G 1/8"	20	50	141	22.2	140	0213071
<b>GEP 14-M-40</b>	G 1/8"	M5	M14 X 1.5	40	101	15.9	66	0213068
<b>GEP 20-M-20</b>	G 1/4"	G 1/8"	M20 X 1.5	20	111	22.2	161	0213070
<b>GEP 20-M-50</b>	G 1/4"	G 1/8"	M20 X 1.5	50	141	22.2	175	0213072



"M" Style

"C" Style

**NON-ROTATIONAL GRIPPER ARM**



- Extends and mounts vacuum cups to mounting clamps.
- End ported for quick-touch pneumatic hose connectors.

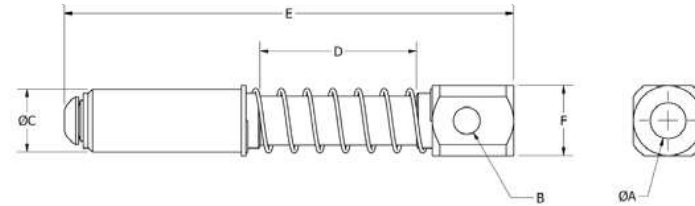
	A	B	ØC	D	E	F	Weight (g)	Piab No.
<b>GNE 10-C-10</b>	M5	M5	10	10	65	13	25	0213073
<b>GNE 10-M-10</b>	M5	M5	M10 X 1	10	65	13	40	0213074
<b>GNE 14-C-15</b>	G 1/8"	G 1/8"	14	15	93	16	65	0213075
<b>GNE 14-C-40</b>	G 1/8"	G 1/8"	14	40	118	16	72	0213077
<b>GNE 14-M-15</b>	G 1/8"	G 1/8"	M14 X 1.5	15	93	16	76	0213076
<b>GNE 14-M-40</b>	G 1/8"	G 1/8"	M14 X 1.5	40	118	16	83	0213078
<b>GNE 20-C-20</b>	G 1/4"	G 1/8"	20	20	132	22	206	0213079
<b>GNE 20-C-50</b>	G 1/4"	G 1/8"	20	50	162	22	234	0213081
<b>GNE 20-M-20</b>	G 1/4"	G 1/8"	M20 X 1.5	20	132	22	250	0213080
<b>GNE 20-M-50</b>	G 1/4"	G 1/8"	M20 X 1.5	50	162	22	280	0213082



"M" Style

"C" Style

**SPRING-LOADED GRIPPER ARM**



- Extends and mounts vacuum cups to mounting clamps.
- Side ported for quick-touch pneumatic hose connectors.
- Spring-loaded for part compliance.

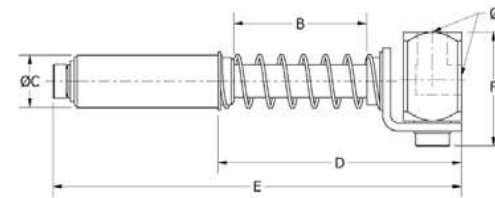
	A	B	C	D	E	F	Weight (g)	Piab No.
<b>GAF 10-C-10</b>	M5	M5	10	10	60	13	22	0213047
<b>GAF 14-C-15</b>	G 1/8"	G 1/8"	14	15	72	16	42	0213049
<b>GAF 14-C-40</b>	G 1/8"	G 1/8"	14	40	100	16	48	0213051
<b>GAF 20-C-20</b>	G 1/4"	G 1/8"	20	20	109	22	132	0213053
<b>GAF 20-C-50</b>	G 1/4"	G 1/8"	20	50	143	22	148	0213055
<b>GAF 20-C-100</b>	G 1/4"	G 1/8"	20	100	206	22	195	0213057
<b>GAF 30-C-40</b>	G 3/8"	G 1/4"	30	80	180	32	348	0213059
<b>GAF 30-C-80</b>	G 3/8"	G 1/4"	30	80	180	32	399	0213061
<b>GAF 10-M-10</b>	M5	M5	M10 X 1	10	60	13	33	0213048
<b>GAF 14-M-15</b>	G 1/8"	G 1/8"	M14 X 1.5	15	72	16	55	0213050
<b>GAF 14-M-40</b>	G 1/8"	G 1/8"	M14 X 1.5	40	100	16	61	0213052
<b>GAF 20-M-20</b>	G 1/4"	G 1/8"	M20 X 1.5	20	109	22	154	0213054
<b>GAF 20-M-50</b>	G 1/4"	G 1/8"	M20 X 1.5	50	143	22	172	0213056
<b>GAF 20-M-100</b>	G 1/4"	G 1/8"	M20 X 1.5	100	206	22	215	0213058
<b>GAF 30-M-40</b>	G 3/8"	G 1/4"	M30 X 1.5	40	152	32	432	0213060
<b>GAF 30-M-80</b>	G 3/8"	G 1/4"	M30 X 1.5	80	180	32	492	0213062



"M" Style

"C" Style

**SPRING-LOADED NON-ROTATIONAL GRIPPER ARMS**



- Extends and mounts vacuum cups to mounting clamps.
- Side ported for quick-touch pneumatic hose connectors.
- Top bracket adjusts angle to match contour of part.
- Spring-loaded for part compliance.
- Threaded shafts include jam nuts and lock washers for plate mounting.

	A	B	C (Dia/Thread)	D	E	F	Weight (g)	Piab No.
<b>GGS 10-C-10</b>	M5	10	10	34	64	22	34	0213093
<b>GGS 14-C-15</b>	G 1/8"	15	14	51	88	31	93	0213095
<b>GGS 14-C-40</b>	G 1/8"	40	14	76	113	31	105	0213097
<b>GGS 20-C-20</b>	G 1/4"	20	20	63	125	40	251	0213099
<b>GGS 20-C-50</b>	G 1/4"	50	20	93	155	40	283	0213101
<b>GGS 20-M-20</b>	G 1/4"	20	M20 X 1.5	63	125	40	275	0213100
<b>GGS 20-M-50</b>	G 1/4"	50	M20 X 1.5	93	155	40	307	0213102
<b>GGS 10-M-10</b>	M5	10	M10 X 1	34	64	22	46	0213094
<b>GGS 14-M-15</b>	G 1/8"	15	M14 X 1.5	51	88	31	104	0213096
<b>GGS 14-M-40</b>	G 1/8"	40	M14 X 1.5	76	113	31	117	0213098

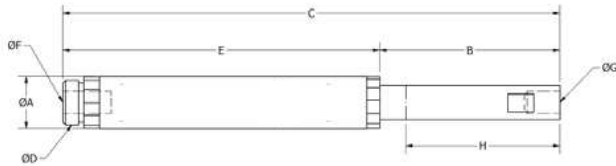


"M" Style

"C" Style



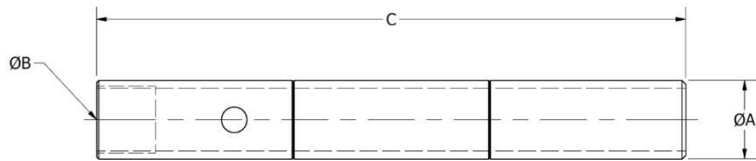
**RETRACTING VACUUM ARMS**



- Used in conjunction with a vacuum cup to retract the work piece once vacuum is made.
- Aids in insert molding, transfer molding, and short cycle molding.
- Extendable for longer reach (using VLR).

	A	B	C	D	E	F	G	H (Stroke)	Weight (g)	Piab No.
<b>RVA 20-60</b>	20	69	190	M17 x 1	121	G 1/8"	G 1/8"	60	68	0214599
<b>RVA 30-50</b>	30	71	190	M27 x 1	119	G 1/8"	G 1/4"	50	157	0214600

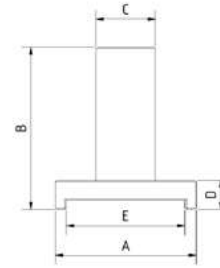
**ARM EXTENSIONS**



- Extends GRF and GRW gripper fingers.
- Attaches to ADZ and ADG cylinder adapters and to ZTB locators.
- Tightening hole for securing connection to mating parts.

	A	B	C	Weight (g)	Piab No.
<b>VLR 10-90</b>	10	M6 x 1	90	9	0213182
<b>VLR 14-120</b>	14	M12 x 1	120	19	0213183
<b>VLR 20-150</b>	20	M17 x 1	150	46	0213184
<b>VLR 30-200</b>	30	M27 x 1	200	94	0213185

**GUIDE ADAPTERS**



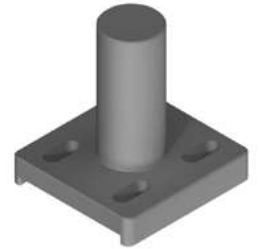
**FA-40-45-D20**

- Product Code: FA-40-45-D20
- Guide adapter for GZE 25

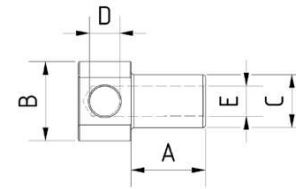
**FA-40-45-D25**

- Product Code: FA-40-45-D25
- Guide adapter for GZE 32

	A	B	C	D	E	Piab No.
<b>FA-40-45-D20</b>	47.5	55	20	10	40	0216028
<b>FA-40-45-D25</b>	52.5	55	25	10	45	0216029



**SUCTION CUP ADAPTERS**

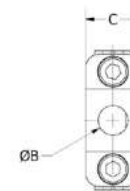
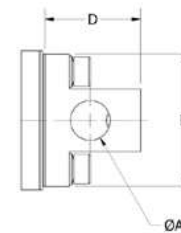


- Suction cup adapters. The component is used for the optimum positioning of a vacuum suction cup including plug.
- Compact design.
- 3 connection possibilities.

	A	B	C	D	E	Piab No.
<b>SA16-28-G1/8-G1/8</b>	28	25	16	G1/8	G1/8	0213332
<b>SA20-28-G1/4-G1/4</b>	28	30	20	G1/4	G1/4	0213333
<b>SA25-40-G3/8-G3/8</b>	40	35	25	G3/8	G3/8	0213334



**VACUUM CUP CONNECTORS**



- Provides minimum profile height, allowing vacuum cups to be mounted to the side of the frame profile.
- Adjustable along the channel of the frame profile.



	A	B	C	D	E	Weight (g)	Piab No.
<b>SAS 1/8</b>	G 1/8"	G 1/8"	16	25	38	43	0214609
<b>SAS 1/4</b>	G 1/4"	G 1/8"	16	25	38	42	0214608