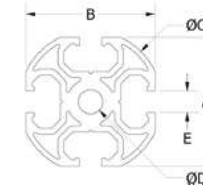
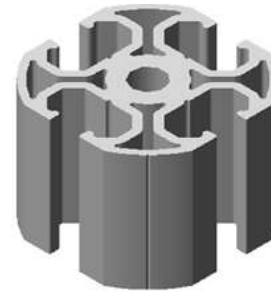


We guarantee quality and rigidity in every profile with our framing solutions. Made from aircraft quality aluminum, we offer “L” (light) to “HX” (heavy) style solutions, with products for a wide and diverse variety of applications.

- **Unique construction** tightens and locks into itself and comes in a variety of gauges
- **Operates on all type robots** from 6-axis to Cartesian to collaborative
- Expansive product and engineering **knowledge**
- Most frame connectors **manufactured from one piece of stock** for strength

HX-40 ALUMINUM PROFILE (2M)

Product Code: HX-40

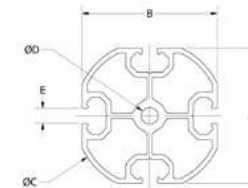
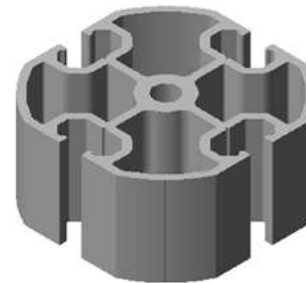


- Use with GWP channel nuts and PL-X channel nut profile.
- 2 Meters.

	A	B	C	D	E	Length (mm)	Channel Nut	Weight (g)	Plab No.
HX-40	36	36	40	6.8	6.1	2000	GWP/PL-X	2395	0214447

HX-60 ALUMINUM PROFILE (2M)

Product Code: HX-60

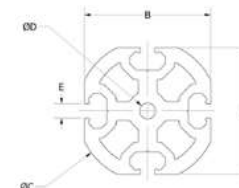
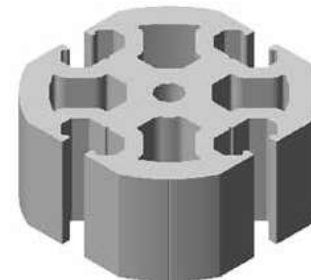


- Use with GWP channel nuts and PL-X channel nut profile.
- 2 Meters.

	A	B	C	D	E	Length (mm)	Channel Nut	Weight (g)	Plab No.
HX-60	54	54	60	6.8	6.1	2000	GWP/PL-X	3685	0214448

HX-60 HD ALUMINUM PROFILE (2M)

Product Code: HX-60 HD

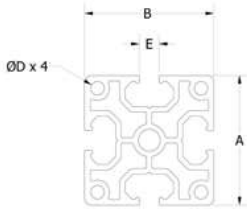


- High Density.
- Use with GWP channel nNuts and PL-X channel nut profile.
- 2 Meters.

	A	B	C	D	E	Length (mm)	Channel Nut	Weight (g)	Plab No.
HX-60 HD	54	54	60	6.8	6.1	2000	GWP/PL-X	7780	0214449

JX-40/40 ALUMINUM PROFILE (2M)

Product Code: JX-40/40

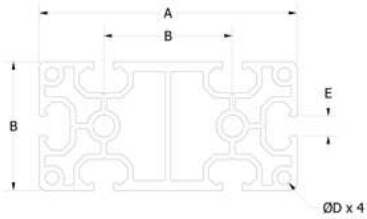


- Use with GWP channel nuts and PL-X channel nut profile.
- 2 Meters.

JX-40/40	A	B	C	D	E	Length (mm)	Channel Nut	Weight (g)	Plab No.
JX-40/40	40	40		4.2	6.1	2000	GWP/PL-X	2999	0214457

JX-80/40 ALUMINUM PROFILE (2M)

Product Code: JX-80/40

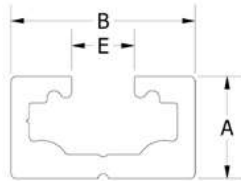


- Use with GWP channel nuts and PL-X channel nut profile.
- 2 Meters.

JX-80/40	A	B	C	D	E	Length (mm)	Channel Nut	Weight (g)	Plab No.
JX-80/40	80	40		4.2	6.1	2000	GWP/PL-X	4710	0214458

L-18/10 ALUMINUM PROFILE (2M)

Product Code: L-18/10

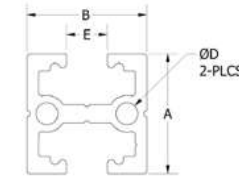


- Use with GWP channel nuts and PL-X channel nut profile.
- Stock length 2 Meters.

L-18/10	A	B	E	Length (mm)	Channel Nut	Weight (g)	Plab No.
L-18/10	10	18	6.1	2000	GWP/PL-X	480	0212099

L-18/18 ALUMINUM PROFILE (2M)

Product Code: L-18/18

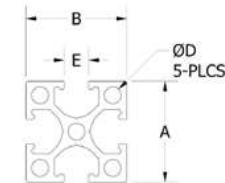


- Use with GWP channel nuts and PL-X channel nut profile.
- Stock length of 2 Meters..

L-18/18	A	B	D	E	Length (mm)	Channel Nut	Weight (g)	Plab No.
L-18/18	18	18	4.2	6.1	2000	GWP/PL-X	700	0213000

X-25/25 ALUMINUM PROFILE

Product Code: X-25/25

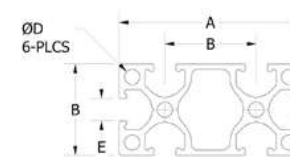


- Use with GWP channel nuts and PL-X channel nut profile.

X-25/25	A	B	C	D	E	Length (mm)	Channel Nut	Weight (g)	Plab No.
X-25/25	25	25		4.2	6.1	2000	GWP/PL-X	1208	0213001

X-50/25 ALUMINUM PROFILE

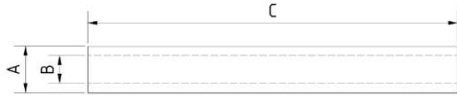
Product Code: X-50/25



- Use with GWP channel nuts and PL-X channel nut profile.

X-50/25	A	B	C	D	E	Length (mm)	Channel Nut	Weight (g)	Plab No.
X-50/25	50	25		4.2	6.1	2000	GWP/PL-X	2060	0213002

ROUND ALUMINUM PROFILE



	A	B	C	Wall Thickness	Piab No.
AR16 x 3	16	10	2000	3 mm	0213268
AR25 x 5	25	15	2000	5 mm	0213269
AR40 x 4	40	32	2000	4 mm	0213270

- The aluminum pipes consist of a special aluminum alloy and are in a position to bear enormous forces.
- Additional lengths available.
- Standard length 2000 mm.
- For suitable sealing caps, see below.
- The surfaces are refined/anodized.



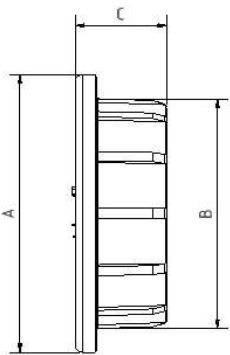
TUBE PROFILES

	OD	ID	Length	Weight (g)	Piab No.
T-10/07	10	07	2000	232	0214698
T-14/11	14	11	1000	325	0215626
T-20/16	20	16	1000	625	0214701
T-20/10	20	10	2000	1280	0214700
T-30/25	30	25	2000	1170	0214703
T-30/20	30	20	2000	2120	0214702

- Highly adjustable, lightweight profile.
- For use with Piab's uniquely designed single piece mounting clamps.



PIPE SEALING CAPS

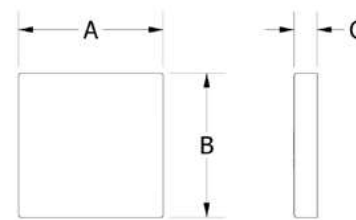


- Used to seal the pipe openings.
- Also protects against impact.

	A	B	C	Piab No.
VSK25	25	15.5	11	0213271
VSK40	40	32.5	13	0213272



END CAPS



- Dresses & protects profile ends.

	A	B	C	Color	Weight (g)	Piab No.
ADK 18/10 L	18	10	4	Black	1	0213003
ADK 18/18 L	18	18	4	Black	2	0213004
ADK 25/25 X	25	25	4	Black	7	0213005
ADK 50/25 X	50	25	4	Black	3	0213006
ADK 40/40 JX	40	40	4	Black	5	0214167
ADK 80/40 JX	80	80	4	Black	9	0214169

ADK 18/10 L

Product Code: ADK 18/10 L



ADK 18/18 L

Product Code: ADK 18/18 L



ADK 25/25 X

Product Code: ADK 25/25 X



ADK 50/25 X

Product Code: ADK 50/25 X



ADK 40/40 JX

Product Code: ADK 40/40 JX

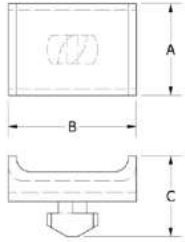


ADK 80/40 JX

Product Code: ADK 80/40 JX



CABLE AND HOSE

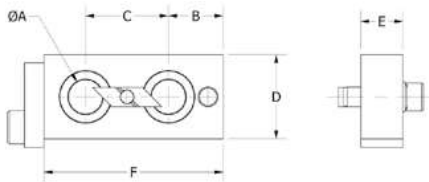


- Convenient wiring and tubing tie-down twists tightly into standard frame profile.
- Easily movable and removable.
- CTM-15 designed to fit into L, X, & D profiles.
- CTM-25 designed to fit into JX & HX profiles.
- Sold in bags of 10.

	A	B	C	Piab No.
CTM-15	12	15	16	0214179
CTM-25	18	25	16	0214180



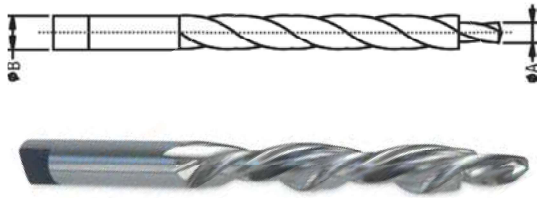
PROFILE JIG



- Easily locate holes for SV & KV profile connectors.
- Eliminates drill "walking" to assure square connections.
- Use X-Type or JX-Type profile.

	A	B	C	D	E	F	Weight (g)	Piab No.
PJ-X	10	12.5	25	25	13	54	75	0214572
PJ-JX	11	20	40	32	13	80	144	0214571

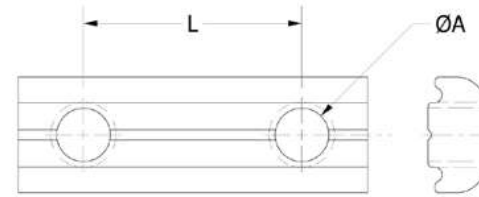
STEPPED DRILL BITS



- Used for step drilling of aluminum profiles.
- One drill setup for installing KV or SV connectors.
- Use with X-Type Profile.

	A (Drill)	B (C" Bore)	Piab No.
STB M4	4.5	9	0214624
STB M5	5.5	10	0214625
STB M6	6.5	11	0214626

CHANNEL NUTS



- Used for replacements or for profile mounting of custom plates or brackets.
- Nuts can be easily dropped in the channel of JX Profile.
- PL-X is a 2 meter length of channel nut profile without holes.



Recommended Torque: (approx.)

	Nm	Ft.-lbs.
M4	3	2
M5	5.5	4
M6	9.5	7
M8	23	17

	A	L	Material	Weight (g)	Piab No.
GWP 4 X	M4	-	Steel	6	0214411
GWP 4-8 X	M4	8	Steel	5	0214414
GWP 4-17 X	M4	17	Steel	9	0214412
GWP 4-31 X	M4	31	Steel	16	0214413
GWP 5 X	M5	-	Steel	5	0214415
GWP 5/45 X	M5	-	Steel	5	0214426
GWP 5-10 X	M5	10	Steel	7	0214416
GWP 5-12 X	M5	12	Steel	9	0214417
GWP 5-14 X	M5	14	Steel	9	0214418
GWP 5-16 X	M5	16	Steel	9	0214419
GWP 5-22 X	M5	22	Steel	12	0214420
GWP 5-25 X	M5	25	Steel	14	0214421
GWP 5-28 X	M5	28	Steel	15	0214422
GWP 5-38 X	M5	38	Steel	19	0214423
GWP 5-41 X	M5	41	Steel	20	0214424
GWP 5-42 X	M5	42	Steel	21	0214425
GWP 5-58 X	M5	58	Steel	27	0214427
GWP 5-63 X	M5	63	Steel	30	0214428
GWP 6 X	M6	6	Steel	5	0214429
GWP 6-12 X	M6	12	Steel	9	0214431
GWP 6-15 X	M6	15	Steel	9	2014431
GWP 6-20 X	M6	20	Steel	11	0214432
GWP 6-25 X	M6	25	Steel	13	0214433
GWP 6-30 X	M6	30	Steel	15	0214434
GWP 6-40 X	M6	40	Steel	19	0214435
GWP 6-50 X	M6	50	Steel	23	0214436
GMP 6-52 X	M6	52	Steel	24	0214437
GWP 6-60 X	M6	60	Steel	28	0214438
GMP 6-92 X	M6	92	Steel	40	0214439
PL-X	-	-	Steel	810	0214573

CHANNEL NUTS

ULP 4 X

Product Code: ULP 4 X
Piab No. 0214725

- 4.5mm thru hole for use with the SV-X Butt Connector.



ULP 5 X

Product Code: ULP 5 X
Piab No. 0214726

- 5.5mm thru hole for use with the SV-X Butt Connector.



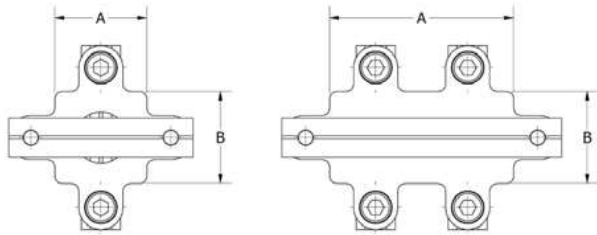
ULP 6 X

Product Code: ULP 6 X
Piab No. 0214727

- 6.5mm thru hole for use with the SV-X Butt Connector.



CROSS JOINT CONNECTOR



- Sandwich style bracket used for frame profile cross mounting.
- Allows for full adjustability in two dimensions individually simultaneously.

	A	B	Weight (g)	Piab No.
KPL 18-18 L	18	18	52	0213012
KPL 25-25 X	25	25	68	0213013
KPL 25-50 X	50	25	118	0213014
KPL 50-50 X	50	50	189	0213015
KPL 40-40 JX	40	40	143	0214506
KPL 40-80 JX	80	40	190	0214507
KPL 80-80 JX	80	80	281	0214508
KPL 25/25 X - HD	25	25	70	0214503
KPL 25/50 X - HD	50	25	120	0214504
KPL 40/40 X - HD	40	40	150	0214505

KPL 18-18 L
Product Code: KPL 18-18 L



KPL 25-25 X
Product Code: KPL 25-25 X



KPL 25-50 X
Product Code: KPL 25-50 X



KPL 50-50 X
Product Code: KPL 50-50 X



KPL 40-40 JX
Product Code: KPL 40-40 JX



KPL 40-80 JX
Product Code: KPL 40-80 JX



KPL 80-80 JX
Product Code: KPL 80-80 JX



KPL 25/25 X - HD
Product Code: KPL 25/25 X - HD



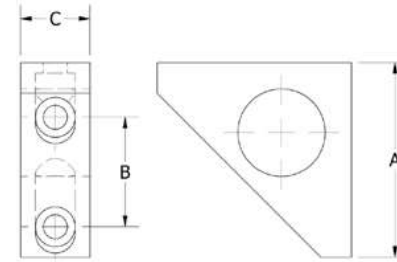
KPL 25-50 X - HD
Product Code: HD



KPL 40/40 JX - HD
Product Code: KPL 40/40 JX - HD



ANGLE JOINT CONNECTOR



- Corner bracket for squareness and stability.
- Connects X or D style profile.
- Fits in corner of two adjoining frame profiles and does not interfere with parts in other channels.
- Includes M5 socket head screws and channel nut.

	A	B	C	Weight (g)	Piab No.
WIV 25 X	25	-	16	28	0213016
WIV 40 JX	38	-	25	65	0214758
WIV 50 X	51	20	16	72	0213017
WIV 80 JX	76	40	25	213	0214759

WIV 25 X
Product Code: WIV 25 X



WIV 40 JX
Product Code: WIV 40 JX



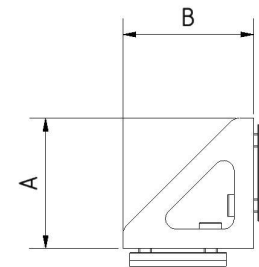
WIV 50 X
Product Code: WIV 50 X



WIV 80 JX
Product Code: WIV 80 JX



ANGLE JOINT CONNECTOR

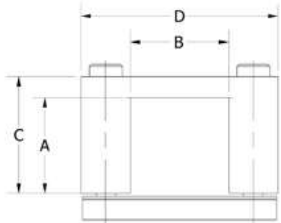


- Angle connector for a strong connection of two profiles under 90°.

	A	B	Width	Piab No.
WV-90-X25	25	25	16	00216428



CROSS JOINT CONNECTOR

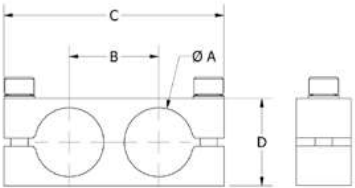


- Bridge style clamp for frame profile cross mounting.
- Allows for full adjustability in two dimensions simultaneously.

	A	B	C	D	Weight (g)	Piab No.
KBV 10-18 L	10	18	16	40	40	0213007
KBV 18-18 L	18	18	25	40	52	0213008
KBV 25-25 X	25	25	30	51	74	0213009
KBV 25-50 X	25	50	30	76	92	0213010
KBV 50-25 X	50	25	60	51	119	0213011
KBV 40-40 JX	40	40	56	66	161	0214463
KBV 40-80 JX	40	80	56	106	209	0214464
KBV 80-40 JX	80	40	97	76	298	0214465



TUBE PARALLEL CLAMPS

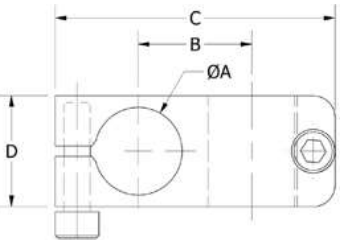


- Parallel profile clamp for Tube (T) profile.
- One piece construction for easy assembly.

	A	B	C	D	Weight (g)	Piab No.
KPC 10	10	14	38	16	14	0214499
KPC 14	14	20	52	19	35	0214500
KPC 20	20	26	64	25	48	0214501
KPC 30	30	39	90	38	100	0214502



TUBE CROSS CLAMPS

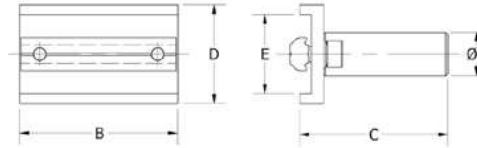


- Adjustable angle cross connection of Tube(T) profile.
- One piece construction for easy assembly.

	A	B	C	D	Weight (g)	Piab No.
KNC 10	10	14	38	16	22	0214495
KNC 14	14	20	52	19	40	0214496
KNC 20	20	26	64	25	70	0214497
KNC 30	30	39	90	38	215	0214498



PROFILE EXTENSION ARM



DKA 10 L

Product Code: DKA 10 L
Connects to L-18/10 or L-18/18.

DKA 14 X

Product Code: DKA 14 X
Connects to X-50/25 or X-25/25.

DKA 20 X

Product Code: DKA 20 X
Connects to X-50/25 or X-25/25.



- Offsets profile connections using clamps.
- Allows for clearance between profile.
- Includes socket head screws and channel nut.

	A	B	C	D	E	Weight (g)	Piab No.
DKA 10 L	10	38	94	22	18	32	0214181
DKA 14 X	14	51	128	32	25	68	0214182
DKA 20 X	20	51	158	32	25	99	0214183

CROSS CONNECTOR HARDWARE

- Low cost stable cross connector for joining two similar profiles.
- Will not interfere with components on either profile.
- Includes cap screw, serrated lock washer, channel nut with through hole.
- Drilling of one profile is required with our STB step drill.

	A	B	C	D	E	Weight (g)	Piab No.
KV-L	M4	U/LP 4X	GWP 4	8	M4	16	0214510
KV-X	M5	U/LP 5X	GWP 5	ø10 (STR M5)	M5	14	0214511
KV-JX	M6	U/LP 6X	GWP 6	15	M6	15	0214509

KV-L

Product Code: KV-L
Use with L-Type profile.

KV-X

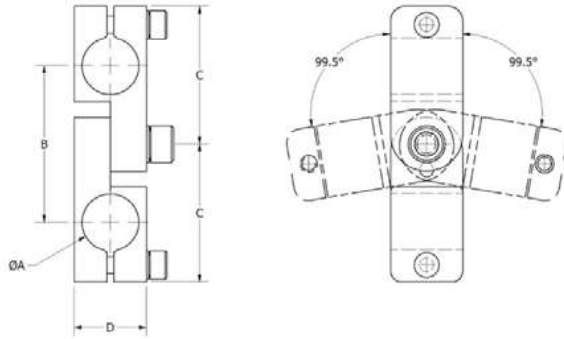
Product Code: KV-X
Use with X-Type profile.

KV-JX

Product Code: KV-JX
Use with JX-Type profile.



TUBE ANGLE SWIVEL CLAMPS

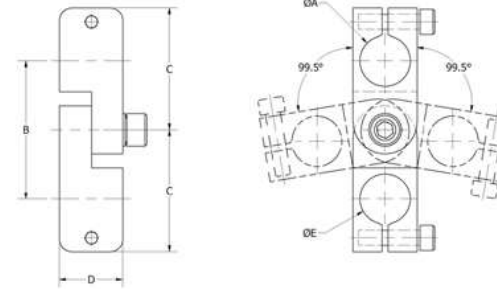


- Adjustable angle cross connection for Tube (T) profile.
- One piece construction for easy assembly.

	A	B	C	D	Weight (g)	Piab No.
KAC 10-10	10	32	29	16	75	0214459
KAC 14-14	14	55	48	25	153	0214460
KAC 20-20	20	55	48	25	131	0214461
KAC 30-30	30	77	64	38	342	0214462



TUBE PARALLEL SWIVEL CLAMPS

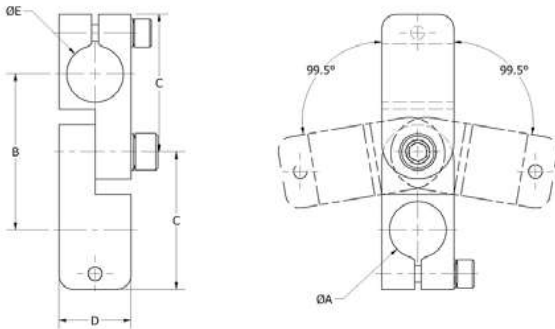


- Parallel connector for Tube (T) profile.
- One piece construction for easy assembly.

	A	B	C	D	E	Weight (g)	Piab No.
KIC 14-14	14	55	48	25	14	155	0214490
KIC 14-20	14	55	48	25	20	144	0214491
KIC 20-20	20	55	48	25	20	131	0214492
KIC 20-30	20	77	64	38	30	370	0214493
KIC 30-30	30	77	64	38	30	327	0214494



TUBE CROSS SWIVEL CLAMPS



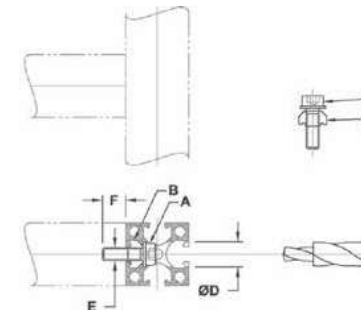
- Swivel cross connection for Tube (T) profile.
- One piece construction for easy assembly.

	A	B	C	D	E	Weight (g)	Piab No.
KEC 14-14	14	55	48	25	14	155	0214466
KEC 14-20	14	55	48	25	20	146	0214467
KEC 20-20	20	55	48	25	20	132	0214468
KEC 20-30	20	77	64	38	30	303	0214469
KEC 30-30	30	77	64	38	30	334	0214470



SV-X BUTT CONNECTOR HARDWARE

Product Code: SV-X

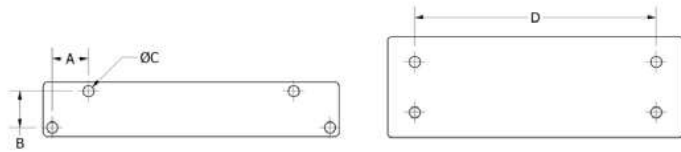


- Low cost stable perpendicular end-butt connector for joining two profiles.
- Will not interfere with components on either profile.
- Includes cap screw, serrated lock washer, and channel nut with through hole.
- Drilling of one profile required using our STB step drill and tapping the end of the profile.

	A	B	D	E	Profile	Weight (g)	Piab No.
SV-X	M5 SHCS	ULP 5X	ø10 (STB M5)	M5	X	9.4	0214027



PROFILE END PLATES



	A	B	C	D	Mounting Plate	Profile	Weight (g)	Plab No.
EPL 2-25 X	18	18	5.5	120	GPM 2 X / GPM 2 SA / GPG 2	X-25/25	95	0214194
EPL 2-50 X	-	25	5.5	120	GPM 2 X / GPM 2 SA / GPG 2	X-50/25	156	0214195
EPL 3-25 X	18	18	5.5	200	GPM 3 X / GPM 3 SA / GPG 3	X-25/25	15	0214196
EPL 3-50 X	-	25	5.5	200	GPM 3 X / GPM 3 SA / GPG 3	X-50/25	218	0214198
EPL 3-40 JX	-	-	8.5	200	GPM 3 X / GPM 3 SA / GPG 3	JX-40/40	218	0214197
EPL 3-80 JX	-	40	8.5	200	GPM 3 X / GPM 3 SA / GPG 3	JX-80/40	445	0214199

- Connects frame profile ends for added stability and strength.
- Note: Includes screws and lock-washers.

EPL 2-25 X

Product Code: EPL 2-25 X



EPL 2-50 X

Product Code: EPL 2-50 X



EPL 3-25 X

Product Code: EPL 3-25 X



EPL 3-40 JX

Product Code: EPL 3-40 JX



EPL 3-50 X

Product Code: EPL 3-50 X

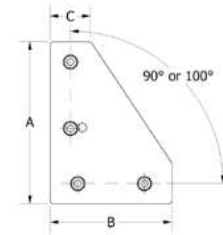


EPL 3-80 JX

Product Code: EPL 3-80 JX



CORNER JOINT PLATES



- Corner plate bracket for squareness and stability.
- Joins two profiles at either a 90° or 100° fixed angle.
- Forms a rigid connection.
- Note: Includes screws and channel nuts.

	A	B	C	D	Weight (g)	Plab No.
EVB 25 X	100	75	25	5.5	147	0213018
EVB 40 JX	100	100	40	6.5	201	0214200
EVB 50 X	100	100	50	5.5	212	0213019

EVB 25 X

Product Code: EVB 25 X



EVB 40 JX

Product Code: EVB 40 JX

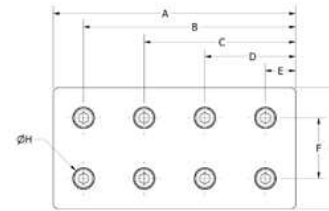


EVB 50 X

Product Code: EVB 50 X



STRAIGHT CONNECTOR PLATES



- Straight plates for side-by-side and end-to-end connections of profile.
- Forms a rigid connection.
- Note: Includes screws and channel nuts.

	A	B	C	D	E	F	G	H	Weight (g)	Plab No.
EVD 50/50 X	50	37.5	12.5	-	-	25	5.0	5.5	86	0214204
EVD 50/100 X	100	87.5	62.5	37.5	12.5	25	5.0	5.5	178	0214203

EVD 50/50 X

Product Code: EVD 50/50 X

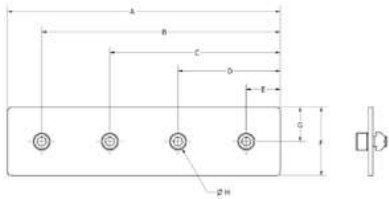


EVD 50/100 X

Product Code: EVD 50/100 X



STRAIGHT CONNECTOR PLATES



- Profile is connected end to end.
- Can be used to brace L connectors on wide profile.
- Forms a rigid connection.
- Note: Includes screws and channel nuts.

	A	B	C	D	E	F	G	H	Weight (g)	Plab No.
EVG 25/50 X	50	-	-	38	13	25	13	5.5	44	0214206
EVG 25/75 X	75	-	63	38	13	25	13	5.5	62	0214207
EVG 25/100 X	100	88	63	38	13	25	13	5.5	88	0214205
EVG 40/160 JX	160	140	100	60	20	40	20	6.5	186	0214208

EVG 25/50 X

Product Code: EVG 25/50 X

EVG 25/75 X

Product Code: EVG 25/75 X

EVG 25/100 X

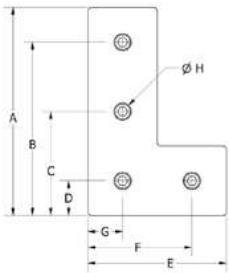
Product Code: EVG 25/100 X

EVG 40/160 JX

Product Code: EVG 40/160 JX



CONNECTOR PLATES



- Profile is connected perpendicular.
- Forms a rigid connection.
- Note: Includes screws and channel nuts.

	A	B	C	D	E	F	G	H	Weight (g)	Plab No.
EVL 50/50 X	50	-	38	13	50	38	13	5.5	90	0214211
EVL 50/75 X	75	63	38	13	50	38	13	5.5	87	0214212
EVL 80/120 JX	120	100	60	20	80	60	20	6.5	182	0214213

EVL 50/50 X

Product Code: EVL 50/50 X

EVL 50/75 X

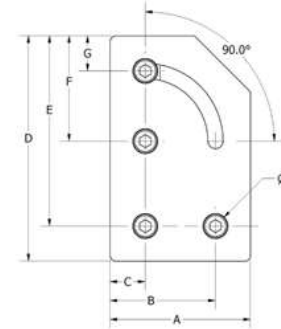
Product Code: EVL 50/75 X

EVL 80/120 JX

Product Code: EVL 80/120 JX



90 DEGREE CONNECTOR PLATES

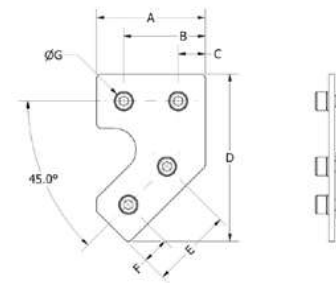


- Joins two profiles at any angle between 0 and 90°.
- Angle of profile intersection can be adjusted at any time.
- Forms a rigid connection.
- Note: Includes screws and channel nuts.

	A	B	C	D	E	F	G	H	Weight (g)	Plab No.
EVW 0-90 X	50	38	13	80	68	38	13	5.5	109	0214220
EVW 0-90 JX	80	60	20	130	110	60	20	6.5	255	0214219



45 DEGREE CONNECTOR PLATES

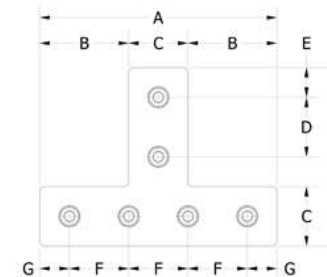


- Joins two profiles at a 45° angle.
- Forms a rigid connection.
- Note: Includes screws and channel nuts.

	A	B	C	D	E	F	G	Weight (g)	Plab No.
EVW 45 X	50	38	13	77	38	13	5.5	95	0214222
EVW 45 JX	80	60	20	118	53	13	6.5	188	0214221



CONNECTOR PLATES

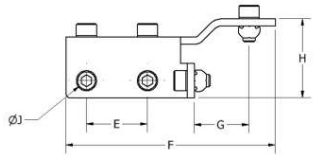


- Profile is connected perpendicular.
- Forms a rigid connection.
- Note: Includes screws and channel nuts.

	A	B	C	D	E	F x (#Holes)	G	H	J	Weight (g)	Plab No.
EVT 50/75 X	50	13	25	25 X 2	13	25 X 2	13	75	5.5	88	0214218
EVT 100/75 X	100	38	25	25 X 2	13	25 X 4	13	75	5.5	135	0214215
EVT 100/80 D	100	38	25	25 X 2	10	25 X 4	13	80	5.5	135	0214216
EVT 100/130 D	100	38	25	25 X 3	10	25 X 4	13	130	5.5	178	0214214
EVT 120/120 JX	120	40	40	40	20	40 X 3	20	120	6.5	219	0214217

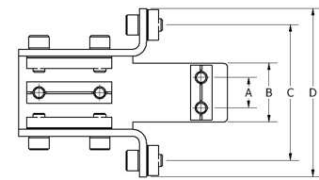


HX CROSS CONNECTORS



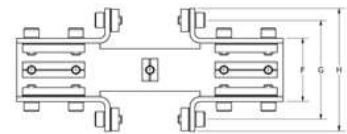
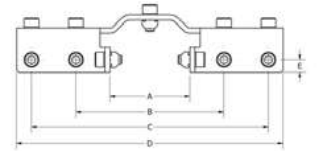
- Profile is connected perpendicular.
- Forms a rigid connection.
- For use with HX profile.
- Note: Includes screws and channel nuts.

	A	B	C	D	E	F	G	H	ØJ	Weight (g)	Piab No.
EVH 60/40-1	15	29	66.8	82.8	30	103	27.2	38.9	6.6	301	0214209

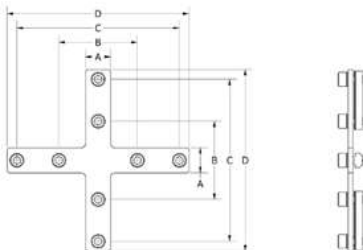


- Profile is connected perpendicular.
- Forms a rigid connection.
- For use with HX profile.
- Note: Includes screws and channel nuts.

	A	B	C	D	E	F	G	H	ØJ	Weight (g)	Piab No.
EVH 60/40-2	54	100	160	180	8.6	42.8	66.8	82.8	7	561	0214210



CROSS CONNECTOR PLATES

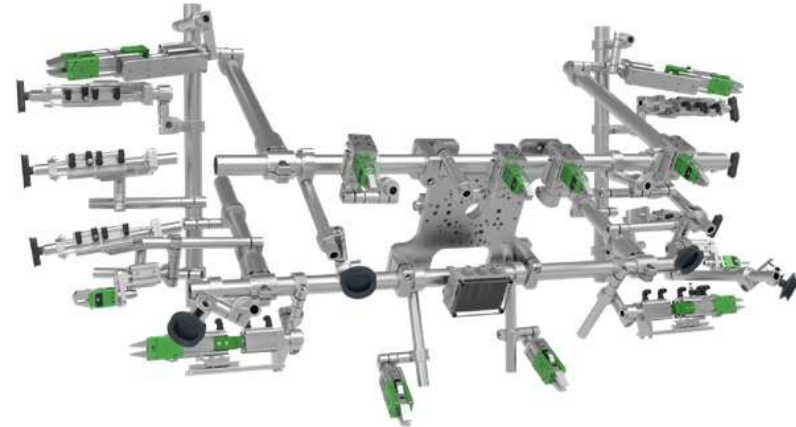


- Profile is connected perpendicular.
- Forms a rigid connection.
- For use with HX profile.
- Note: Includes screws and channel nuts.

	A	B	C	D	ØE	Weight (g)	Piab No.
EVC 40/40	18	56	116	130	6.5	205	0214201
EVC 60/60	26	66	166	190	6.5	365	0214202



PIAB OFFERS FULL RANGE OF FRAMING - TUBULAR, SQUARE AND SPECIALS



- Fully modular tubular framing system compatible with Piab complete EOAT range
- Suitable when you have complex geometries or when adjustability is of high importance



- Fully modular square framing system compatible with Piab complete EOAT range
- Suitable when you have less complex geometries and requires simple assembly



- Special framing systems can be custom made for your specific need
- Piab also offers custom made negative forms when extra stability and sensitive surfaces needs to be handled

Did you know Piab offers full End of arm tool service, from design to commissioning? Reach out to your Piab contact to learn more.