

Manually operated console minivalves Series 2

3/2 and 5/3-way CC CO CP
Ports M5, Cartridge Ø 4



This series of miniature valves has been specially designed to satisfy all the application requirements of the controls industry with particular attention paid to the operating characteristics required from these components:

- Short operational stroke
- Small dimensions

GENERAL DATA

Valve group	3/2-way
Construction	poppet-type (closed centres)
Materials	aluminium body, brass plunger, NBR seals
Mounting	panel
Ports	M5 or cartridge dia. 4
Ambient temperature	0°C + 60°C
Medium temperature	0°C + 50°C
Operating pressure	see models

CODING EXAMPLE

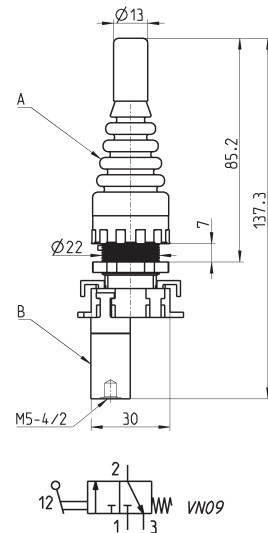
2	3	4	-	97	5
----------	----------	----------	----------	-----------	----------

2	SERIES
3	FUNCTION: 3 = 3/2-way NC 4 = 3/2-way NO 8 = 5/3-way CO (function realized with 2x 3/2-way NC valves)
4	PORTS: 4 = cartridge \varnothing 4 5 = M5
97	MODE OF OPERATION: 87 = 3 position selector 89 = push button 97 = palm switch 90 = joystick 99 = 2 position selector 92 = pedal 904 = key
5	RESETTING: 5 = spring return 0 = stable 2 = latching-twist to release 54 = joystick

2

CONTROL

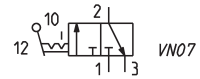
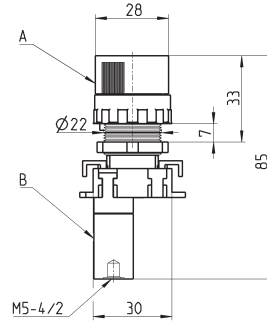
Minivalves

 Operating pressure = 2 ÷ 8 bar
 Flow rate = 60 NI/min.


Mod.	A	B
234-905	200-905	234-000
235-905	200-905	235-000

Minivalves

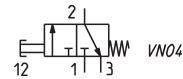
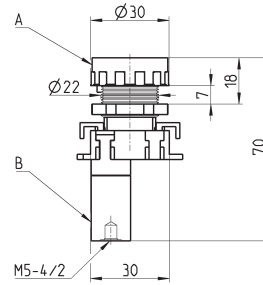
Operating pressure = 2 ÷ 8 bar
Flow rate = 60 NI/min.



Mod.	A	B
234-990	200-990	234-000
235-990	200-990	235-000

Minivalves

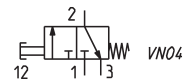
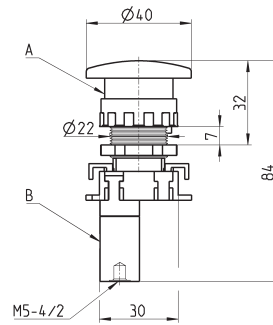
Operating pressure = 2 ÷ 8 bar
Flow rate = 60 NI/min.
Actuating force at 6 bar = 7 N



Mod.	A	B
234-895	200-895	234-000
235-895	200-895	235-000

Minivalves

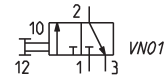
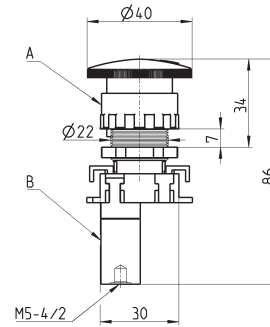
Operating pressure = 2 ÷ 8 bar
Flow rate = 60 NI/min.
Actuating force at 6 bar = 7 N



Mod.	A	B
234-975	200-975	234-000
235-975	200-975	235-000


Minivalves

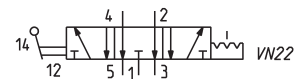
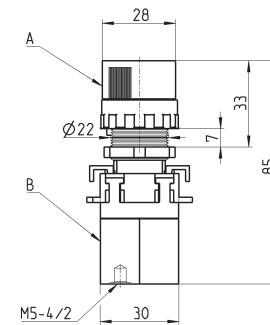
Operating pressure = 2 ÷ 8 bar
 Flow rate = 60 NI/min.
 Actuating force at 6 bar = 7 N



Mod.	A	B
234-972	200-972	234-000
235-972	200-972	235-000


Minivalves

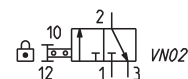
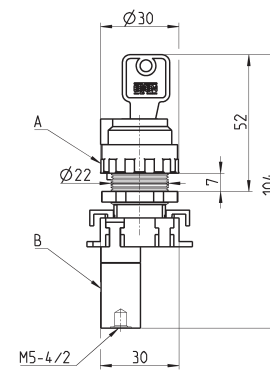
Operating pressure = 2 ÷ 8 bar
 Flow rate = 60 NI/min.



Mod.	A	B
284-870	200-870	284-000
285-870	200-870	285-000


Minivalves

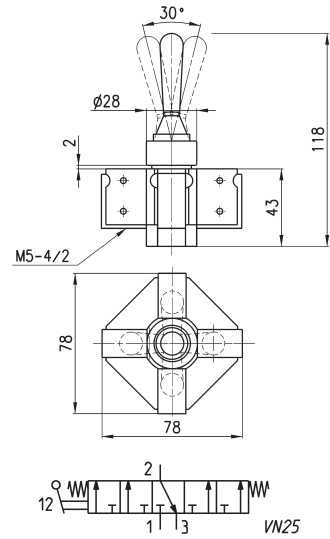
Operating pressure = 2 ÷ 8 bar
 Flow rate = 60 NI/min.



Mod.	A	B
234-904	200-904	234-000
235-904	200-904	235-000

Joystick valves

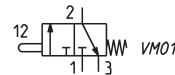
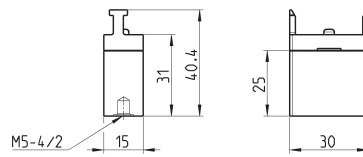
Minimum pressure = 2 bar



Mod.
234-9054
235-9054

Minivalves

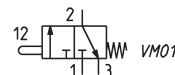
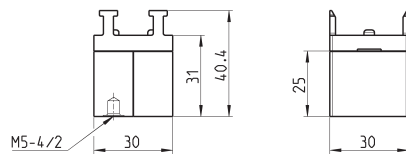
Operating pressure = 2 ÷ 8 bar
Flow rate = 60 NI/min.



Mod.
234-000
235-000

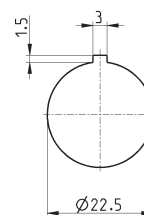
Minivalves

Operating pressure = 2 ÷ 8 bar
Flow rate = 60 NI/min.



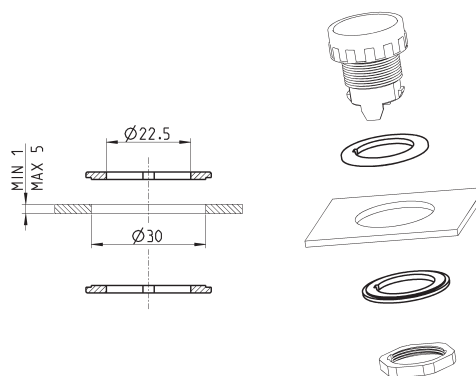
Mod.
284-000
285-000

Drilling for mounting



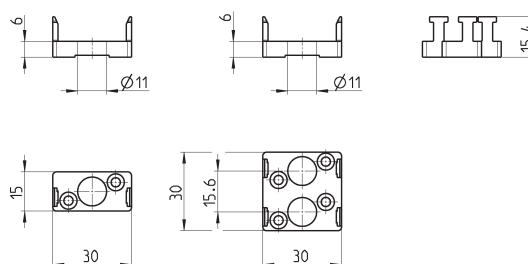
Adaptor

Panel hole adaptor Ø30
Supplied with:
2x reduction rings



Mod.
200-2230

End cover



Mod.
210-000
220-000