

# Silencers

Series: 2901 - 2903 - 2921 - 2931 - 2938 - 2939 - 2905 - RSW  
 Ports: M5, G1/8, G1/4, G3/8, G1/2, G3/4, G1



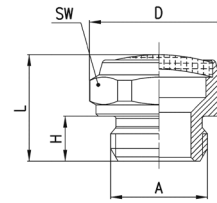
The silencers are indispensable elements for eliminating or reducing the characteristic noise of compressed air during discharge operations. They should always be placed on the outlets of 3/2, 5/2 or 5/3-way valves. When carrying out maintenance, the silencers should be degreased using white spirit or paraffin and compressed air blown through them in the opposite direction to operation.

Flow rate: determined with inlet supply 6 bar and output in atmosphere.  
 Noise level: determined through a test which is carried out using a phonometer. Placing the phonometer one meter away from the application at the same height for a period of ten seconds gives an average reading of the noise generated.

## GENERAL DATA

<b>Construction</b>	body with male and female thread
<b>Materials used for body</b>	2901 - 2903: brass 2921 - 2931: coppering steel 2938 - 2939: polyethylene
<b>Materials used for silencing</b>	2901 - 2903: stainless steel 2921 - 2931: bronze (sintered) 2938 - 2939: polyethylene
<b>Ports</b>	M5 - G1/8 - G1/4 - G3/8 - G1/2 - G3/4 - G1

Silencers Series 2901

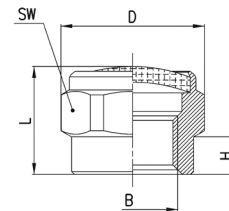
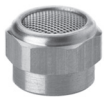


DIMENSIONS								
Mod.	A	D	H	L	SW	Max. Oper. Pressure	Flow rate NI/min	Noise db (A)
2901 1/8	G1/8	15,3	5	12	14	10	700	76
2901 1/4-17	G1/4	18,5	6	14	17	10	1000	78
2901 1/4-22	G1/4	23,5	6	15	22	10	1600	80
2901 3/8	G3/8	23,5	7	16	22	10	1500	76
2901 1/2	G1/2	29,5	8	17,5	27	10	3400	86
2901 3/4	G3/4	34	9	20	32	6	4100	87
2901 1	G1	43	11	24,5	40	6	7600	88

SIL 1



Silencers Series 2903

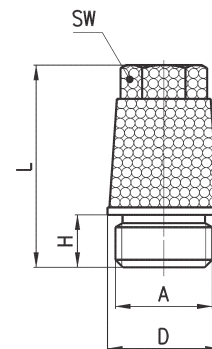


DIMENSIONS								
Mod.	B	D	H	L	SW	Max. Oper. Pressure	Flow rate NI/Min	Noise db(A)
2903 1/8	G1/8	15,3	4	11	14	10	700	74

SIL 1



Silencers Series 2921

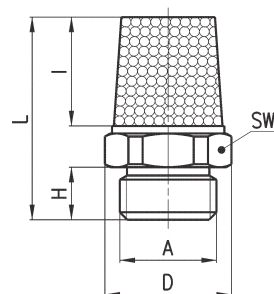


DIMENSIONS								
Mod.	A	D	H	L	SW	Max. Oper. Pressure	Flow rate NI/Min	Noise db(A)
2921 1/8	G1/8	12	4,5	21,5	8	10	1730	81
2921 1/4	G1/4	15	6	28	10	10	3300	85
2921 3/8	G3/8	19	8	37	13	10	4250	79
2921 1/2	G1/2	23	9	43,5	15	10	6800	87
2921 3/4	G3/4	30	10	56	19	10	9800	84
2921 1	G1	37	12	67	24	10	10900	86

SIL 1



## Silencers Series 2931

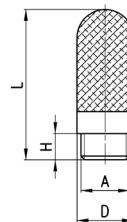


DIMENSIONS										
Mod.	A	D	H	I	L	SW	Max. Oper. Pressure	Flow rate NI/Min	Noise db (A)	
2931 M5	M5	7,7	4	8	16,5	7	10	450	69	
2931 M7	M7	9	5	8,5	20	8	10	1130	76	
2931 1/8	G1/8	13	4,5	13	21	12	10	1927	88	
2931 1/4	G1/4	16,2	6	16,5	27	15	10	3200	86	
2931 3/8	G3/8	20	7	23	35,5	19	10	4560	81	
2931 1/2	G1/2	24,5	8	28	42	23	10	6800	87	
2931 3/4	G3/4	32	9	37	54	30	10	9600	84	
2931 1	G1	38,5	11	47	67	36	10	10800	86	

SIL 1



## Silencers Series 2938

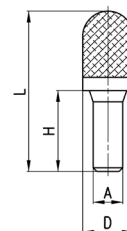


DIMENSIONS							
Mod.	A	D	H	L	Max. Oper. Pressure	Flow rate NI/Min	Noise db (A)
2938 M5	M5	6,5	4,1	23	10	546	67
2938 1/8	G1/8	12,5	5,7	34	10	1441	75
2938 1/4	G1/4	15,5	7	42,5	10	2752	79
2938 3/8	G3/8	18,5	11,5	67,5	10	4735	73
2938 1/2	G1/2	23,5	11	77	10	8534	86

SIL 1


 Operating temperature:  
 - 40 / + 80 °C

## Silencers Series 2939

 Operating temperature:  
 - 40 / + 80 °C


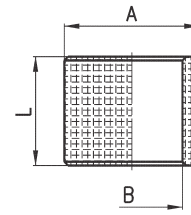
DIMENSIONS							
Mod.	øA	D	H	L	Max. Oper. Pressure	Flow rate NI/Min	Noise db (A)
2939 4	4	7	16	32	10	335	80
2939 6	6	12,5	20,5	45	10	632	79 *
2939 8	8	13,5	21,5	43,5	10	1229	89 *
2939 10	10	15,5	26,5	57,5	10	2650	87 *

SIL 1


 \* this code can be used on the  
 Valve Island Series F (see the  
 section 2/3.16).

### Silencing bush Series 2905

For flow control valves Mod. SCO and MCO  
(see the section 2/7.05)



#### DIMENSIONS

Mod.	A	B	L
<b>2905 1/8</b>	14	10	14.5
<b>2905 1/4</b>	18	13.5	14.5
<b>2905 3/8</b>	21	16.8	14.5